



CENTRAL TEXAS REGIONAL  
**MOBILITY AUTHORITY**

April 25, 2022  
**AGENDA ITEM #7**

---

Discuss and consider designating maximum speeds on 183 Toll and 45SW Toll and approving corresponding amendments to Mobility Authority Policy Code § 301.015

Strategic Plan Relevance: Regional Mobility  
Department: Engineering  
Contact: Mike Sexton, P.E., Acting Director of Engineering  
Associated Costs: Estimated \$200,000  
Funding Source: 183S Project funds and Operating Fund  
Action Requested: Consider and act on draft resolution

**Project Description/Background:**

The 183 South Project broke ground in April 2016 and opened in phases with the north end opening in August 2019, and the south end opening in early 2021. During the construction phase of the project, construction speed limits were determined by engineering criteria and were controlled by temporary signage placed in the corridor specified by the traffic control plans. As the project has now fully opened to traffic, staff recommends posting the permanent speed limit signage in the corridor.

The 45SW Toll opened to traffic in 2019 and was signed 65 miles per hour using prima facie speed limits and with consideration of similar facilities.

**Previous Actions & Brief History of the Program/Project:**

Section 301.014 of the Policy Code requires that guidelines established by Texas Department of Transportation Procedures for Establishing Speed Zones, current edition, will be used in conducting Speed Zone Studies and establishing Speed Limits on authority operated toll roads. The data collected during the Speed Zone Studies are analyzed to determine the 85th Percentile Speed. The 85th Percentile Speed is the speed at which 85% of the traffic at a specific test site is traveling at or slower. The 85th Percentile Speed will be the basis for how the posted speed limit is determined.

Construction activities continued on 183 Toll through the later part of 2021 affecting the traffic patterns which prohibited collection of the required data for a speed study. Once traffic patterns normalized on both 45SW Toll and 183 Toll, speed zone studies commenced for the toll lanes and are now complete. Separately, TxDOT prepared a speed study for their general purpose lanes along US183.

**Financing:**

Project funds will be used to pay for the installation of the speed limit signs on 183 Toll. The Operating Fund will be used to pay for the installation of the speed limit signs on 45SW Toll.

**Action requested/Staff Recommendation:**

Staff recommends that the Board designate a maximum speed of 75 miles per hour for 183 Toll and a maximum speed of 70 miles per hour for 45SW Toll. Staff further recommends that Section 301.015 of the Policy Code be amended by adding the following:

- d) The maximum speed of a motor vehicle on the 45SW Toll is limited to 70 miles per hour except within construction, transitional, or reduced speed zones, or during any period of adverse atmospheric or weather conditions.
  
- e) The maximum speed of a motor vehicle on the 183 Toll is limited to 75 miles per hour except within construction, transitional, or reduced speed zones, or during any period of adverse atmospheric or weather conditions.

**Backup provided:**

Draft Resolution  
Draft Mobility Authority Policy Code § 301.015  
45SW Toll Speed Study  
183 Toll Speed Study

**GENERAL MEETING OF THE BOARD OF DIRECTORS  
OF THE  
CENTRAL TEXAS REGIONAL MOBILITY AUTHORITY**

**RESOLUTION NO. 22-0XX**

**APPROVING MAXIMUM AND MINIMUM SPEED LIMITS  
FOR THE 45SW TOLL AND 183 TOLL AND RELATED AMENDMENTS TO  
MOBILITY AUTHORITY POLICY CODE SECTION 301.015**

WHEREAS, Chapter 370 of the Transportation Code and other applicable law authorizes the Board to establish speed limits on Mobility Authority roadways; and

WHEREAS, Section 301.014 of the Policy Code provides guidelines for establishing speed limits on Mobility Authority roadways; and

WHEREAS, Section 301.015 of the Mobility Authority Policy Code publishes the speed limits for certain Mobility Authority toll facilities; and

WHEREAS, the Board has reviewed and considered the “45SW Toll Speed Limit Study” dated March 18, 2022, prepared by WSP USA Inc. and on file in the Mobility Authority office; and

WHEREAS, based on the 45SW Toll Speed Limit Study, the Board finds that a maximum speed limit of 70 miles per hour is a safe and reasonable speed for those who travel on 45SW Toll, and that it is in the best interest of the Mobility Authority and those who travel on 45SW Toll to establish a maximum speed limit of 70 miles per hour; and

WHEREAS, the Board has reviewed and considered the “183 Toll Speed Limit Study” dated March 9, 2022, prepared by Atkins North America, Inc. and on file in the Mobility Authority office; and

WHEREAS, based on the 183 Toll Speed Limit Study, the Board finds that a maximum speed limit of 75 miles per hour is a safe and reasonable speed for those who travel on 183 Toll, and that it is in the best interest of the Mobility Authority and those who travel on 183 Toll to establish a maximum speed limit of 75 miles per hour; and

NOW THEREFORE, BE IT RESOLVED, that the Board accepts the 45SW Toll Speed Limit Study and hereby approves the recommended maximum speed limit of 70 miles per hour on 45SW Toll, as set forth in the 45SW Toll Speed Limit Study; and

BE IT FURTHER RESOLVED, that the Board accepts the 183 Toll Speed Limit Study and hereby approves the recommended maximum speed limit of 75 miles per hour on 183 Toll, as set forth in the 183 Toll Speed Limit Study; and

BE IT FURTHER RESOLVED, that the Board hereby amends Section 301.015 of the Mobility Authority Policy Code to promulgate maximum speed limits for the 45SW Toll and 183 Toll by adding new Subsections 301.015(d) and 301.015(e) as set forth in Exhibit A hereto.

Adopted by the Board of Directors of the Central Texas Regional Mobility Authority on the 25<sup>th</sup> day of April 2022.

Submitted and reviewed by:

Approved:

---

James M. Bass  
Executive Director

---

Robert W. Jenkins, Jr.  
Chairman, Board of Directors



**Exhibit A**

### **301.015 Speed Limits for Specific Roadways**

- (a) The maximum speed of a motor vehicle on the main tolled lanes of the 183A Turnpike is limited to 75 miles per hour except within construction, transitional, or reduced speed zones, or during any period of adverse atmospheric or weather conditions. Notwithstanding the foregoing, the maximum speed of a motor vehicle on a non-tolled frontage road of the 183A Turnpike is limited to 60 miles per hour.
- (b) The maximum speed of a motor vehicle on the main toll lanes of the 290 Toll is limited to 75 miles per hour except within construction, transitional, or reduced speed zones, or during any period of adverse atmospheric or weather conditions. Notwithstanding the foregoing, a lesser transition maximum speed limit for a motor vehicle that is entering or exiting a main toll lane of the 290 Toll is established as identified on the strip map attached as Appendix C to the September 8, 2014, Speed Zone Study, on file in the Mobility Authority offices.
- (c) The maximum speed of a motor vehicle on the MoPac Express Lanes is limited to 70 miles per hour except within construction, transitional, or reduced speed zones, or during any period of adverse atmospheric or weather conditions. The minimum speed of a motor vehicle on the MoPac Express Lanes is limited to 55 miles per hour except within construction, transitional, or reduced speed zones, or during any period of adverse atmospheric or weather conditions.
- (d) The maximum speed of a motor vehicle on the on the main toll lanes of the 45SW Toll is limited to 70 miles per hour except within construction, transitional, or reduced speed zones, or during any period of adverse atmospheric or weather conditions.
- (e) The maximum speed of a motor vehicle on the on the main toll lanes of the 183 Toll is limited to 75 miles per hour except within construction, transitional, or reduced speed zones, or during any period of adverse atmospheric or weather conditions.

### 301.015 Speed Limits for Specific Roadways

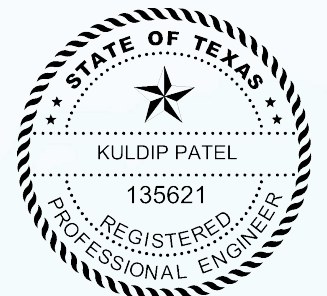
(a) The maximum speed of a motor vehicle on the main tolled lanes of the 183A Turnpike is limited to 75 miles per hour except within construction, transitional, or reduced speed zones, or during any period of adverse atmospheric or weather conditions. Notwithstanding the foregoing, the maximum speed of a motor vehicle on a non-tolled frontage road of the 183A Turnpike is limited to 60 miles per hour.

(b) The maximum speed of a motor vehicle on the main toll lanes of the 290 Toll is limited to 75 miles per hour except within construction, transitional, or reduced speed zones, or during any period of adverse atmospheric or weather conditions. Notwithstanding the foregoing, a lesser transition maximum speed limit for a motor vehicle that is entering or exiting a main toll lane of the 290 Toll is established as identified on the strip map attached as Appendix C to the September 8, 2014, Speed Zone Study, on file in the Mobility Authority offices.

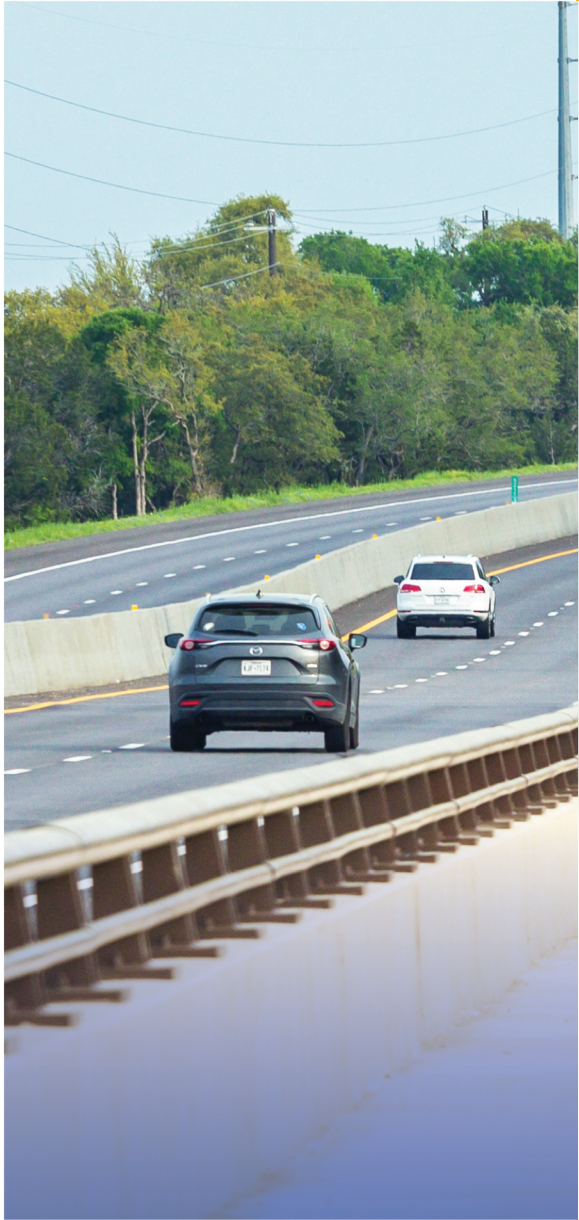
(c) The maximum speed of a motor vehicle ~~on~~ the MoPac Express Lanes is limited to 70 miles per hour except within construction, transitional, or reduced speed zones, or during any period of adverse atmospheric or weather conditions. The minimum speed of a motor vehicle on the MoPac Express Lanes is limited to 55 miles per hour except within construction, transitional, or reduced speed zones, or during any period of adverse atmospheric or weather conditions.

(d) The maximum speed of a motor vehicle on the on the main toll lanes of the 45SW Toll is limited to 70 miles per hour except within construction, transitional, or reduced speed zones, or during any period of adverse atmospheric or weather conditions.

(e) The maximum speed of a motor vehicle on the on the main toll lanes of the 183 Toll is limited to 75 miles per hour except within construction, transitional, or reduced speed zones, or during any period of adverse atmospheric or weather conditions.



*K. Patel* 03/18/2022



# Speed Limit Study



CENTRAL TEXAS REGIONAL  
**MOBILITY AUTHORITY**



**SH 45SW Speed Study**  
**Central Texas Regional Mobility Authority**

**March 18, 2022**

**Prepared by:**

**Kuldip Patel, P.E.**

**EXECUTIVE SUMMARY**

The SH 45SW Toll Road is a 3.6-mile tolled highway in southwest Austin in southern Travis and northern Hays County which connects Loop 1 MoPac Expressway and FM 1626.

The Central Texas Regional Mobility Authority (CTRMA) operates the SH 45SW Toll Road. CTRMA has tasked WSP to conduct a speed zone study to validate or adjust posted speeds using TxDOT’s Procedures for Establishing Speed Zones Manual. The 85<sup>th</sup> percentile speed is a speed measurement that is used for establishing regulatory speed zones, which represents the speed that 85 percent of vehicles are traveling at or below. The existing posted speed limit on SH 45SW Toll Road is 65 miles per hour (mph). The table below summarizes the 85th percentile speed measurements for the SH 45SW Toll Road.

**85<sup>th</sup> percentile Speed – SH 45 SW Toll Road (Posted Speed Limit – 65 mph)**

<b>NB Direction</b>	<b>Speed (mph)</b>	<b>SB Direction</b>	<b>Speed (mph)</b>
SH 45SW just south of Bliss Spillar Rd	68	SH 45SW just south of Bliss Spillar Rd	67
SH 45SW just south of Mainline Toll Plaza	70	SH 45SW just south of Mainline Toll Plaza	71
SH 45SW about 0.4 miles north of Bear Creek	74	SH 45SW about 0.4 miles north of Bear Creek	66
SH 45SW south of MoPac/ SH 45SW interchange	71	SH 45SW south of MoPac/ SH 45SW interchange	69
<b>NB Average Speed</b>	<b>70</b>	<b>SB Average Speed</b>	<b>68</b>

**Per the results of the analysis the existing posted regulatory speed limit of 65-mph is justified. However, the study results also could support a speed limit of 70 mph per the TxDOT Speed Zones Manual.** In addition to the speed data, crash data from 2019 to 2021 were also analyzed to understand crash patterns related to the travel speed. It was determined that there were no crashes recorded along SH 45SW Toll Road except at the interchange of Loop 1 MoPac Expressway/SH 45SW and at the intersection of FM 1626/SH 45SW.

## Table of Contents

<b>1. INTRODUCTION.....</b>	<b>1</b>
<b>2. EXISTING CONDITIONS .....</b>	<b>2</b>
<b>2.1 Study Area .....</b>	<b>2</b>
<b>2.2 Typical Section .....</b>	<b>2</b>
<b>2.3 Existing Speed Limits .....</b>	<b>2</b>
<b>3. SPEED ZONE STUDY METHODOLOGY .....</b>	<b>3</b>
<b>3.1 85<sup>th</sup> Percentile Speed .....</b>	<b>3</b>
<b>3.2 Crash Data .....</b>	<b>4</b>
<b>3.3 Strip Map .....</b>	<b>4</b>
<b>3.4 Ongoing Corridor Development .....</b>	<b>4</b>
<b>4. RECOMMENDED SPEED ZONE .....</b>	<b>5</b>
<b>APPENDICES</b>	
<b>Appendix A: Speed Data Measurement Locations</b>	
<b>Appendix B: Field Measured Speed Data</b>	
<b>Appendix C: Study Area Strip Map</b>	

## List of Figures

Figure 1. SH 45SW Toll Road Location Map .....	1
--	---

## List of Tables

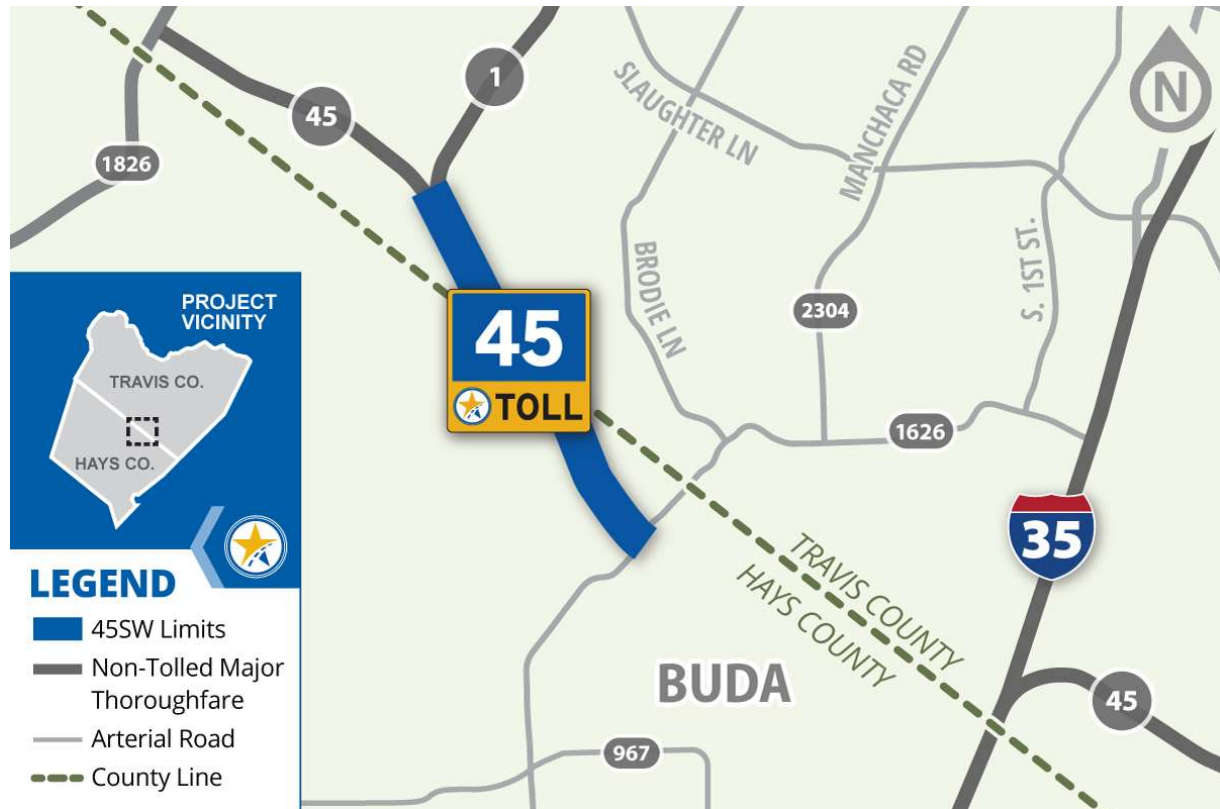
Table 1. 85 <sup>th</sup> percentile Speed – SH 45SW Toll Road.....	3
---	---



## 1. INTRODUCTION

The SH 45SW Toll Road is a 3.6-mile tolled highway in southwest Austin in southern Travis and northern Hays County and it connects Loop 1 MoPac Expressway and FM 1626. Figure 1 shows the extent of the SH 45SW Toll Road.

Figure 1. SH 45SW Toll Road Location Map



Central Texas Regional Mobility Authority (CTRMA) operates the SH 45SW Toll Road. CTRMA has tasked WSP to conduct a speed zone study to validate or adjust posted speeds using TxDOT's Procedures for Establishing Speed Zones Manual. Under section 545.354 of the Texas Transportation Code, the CTRMA may establish speed limits that are safe and reasonable of up to 75 mph as determined from the results of an engineering and traffic investigation.

The purpose of this report is to present the results of the 2021 speed zone study for the SH 45SW Toll Road corridor. This is the first speed study conducted on the corridor since the SH 45SW Toll Road facility was opened to traffic in June 2019. Per TxDOT guidelines, the toll road was opened with an initial speed limit consistent with TxDOT guideline considerations for speed limits on new roadways such as design speed. Based on guideline considerations, the opening speed limit was set to 65 mph.

## **2. EXISTING CONDITIONS**

### **2.1 Study Area**

The study area for the speed study consists of SH 45SW Toll Road between Loop 1 MoPac Expressway and FM 1626.

### **2.2 Typical Section**

The typical section of the SH 45SW Toll Road between Loop 1 MoPac Expressway and FM 1626 includes up to 40-foot pavement width in each direction. Each direction includes two 12-foot wide lanes, a 10-foot outside shoulder and a 4 to 6-foot inside shoulder with varying median width.

### **2.3 Existing Speed Limits**

The existing regulatory speed limit along SH 45SW Toll Road is 65 mph.

*This area intentionally left blank.*



### 3. SPEED ZONE STUDY METHODOLOGY

Per the Texas Department of Transportation (TxDOT) guidelines provided in the Procedures for Establishing Speed Zones (August 2015, the most recent edition), the speed measurements were taken approximately at one-mile intervals throughout the entire length of SH 45SW Toll Road. **Appendix A** shows the location of speed measurement points along SH 45SW Toll Road.

The speeds were measured under free-flow conditions. Per speed study requirements, free-flow speeds should include a minimum of 125 cars in each direction at a location. Speed study requirements also state that speed checks be discontinued after two hours if radar is used. Free flow speeds were measured using radar speed sensors for 125 vehicles at all the locations except for SH 45SW location 0.4 miles north of Bear Creek. At this location, free flow speeds were measured for 70 vehicles in two hours. All measurements were completed on September 30<sup>th</sup>, 2021 and there were no adverse weather conditions or incidents that may cause traffic to slow down. **Appendix B** contains the field measured speed data for the four speed measurement locations.

#### 3.1 85<sup>th</sup> Percentile Speed

The 85<sup>th</sup> percentile speed is a speed measurement that is used for establishing regulatory speed zones, which represents the speed that 85 percent of vehicles are traveling at or below. TxDOT recommends that the maximum speed limits posted as the result of a speed study should be based primarily on the 85<sup>th</sup> percentile speed, when adequate speed samples are obtained. The 85<sup>th</sup> percentile speeds for the SH 45SW Toll Road were computed based on the field measured speed data. Table 1 summarizes the 85<sup>th</sup> percentile speed for the northbound and southbound directions for the four segments of the corridor, as well as the average of the four segments.

**Table 1. 85<sup>th</sup> percentile Speed – SH 45SW Toll Road (Posted Speed Limit – 65 mph)**

<b>NB Direction</b>	<b>Speed (mph)</b>	<b>SB Direction</b>	<b>Speed (mph)</b>
SH 45SW just south of Bliss Spillar Rd	68	SH 45SW just south of Bliss Spillar Rd	67
SH 45SW just south of Mainline Toll Plaza	70	SH 45SW just south of toll Mainline Toll Plaza	71
SH 45SW about 0.4 miles north of Bear Creek	74	SH 45SW about 0.4 miles north of Bear Creek	66
SH 45SW south of MoPac/ SH 45SW interchange	71	SH 45SW south of MoPac/ SH 45SW interchange	69
<b>NB Average Speed</b>	<b>70</b>	<b>SB Average Speed</b>	<b>68</b>

Per the 85<sup>th</sup> percentile speed data presented above, vehicles on the SH 45 SW Toll Road are typically traveling at or above the posted speed limit of 65 mph. Therefore, the study results would support maintaining the existing 65 mph speed limit or increasing the posted speed to 70 mph.

### **3.2 Crash Data**

Roadways having an average crash rate higher than the statewide average for the same type of facility may require a safety-related reduction in the speed limit below that suggested by the 85<sup>th</sup> percentile speed whenever vehicle speed is a significant contributing factor toward the crash rate. The crash data along SH 45SW Toll Road were obtained from TxDOT's Crash Records Information System (CRIS) for years 2019 to 2021. The length of time was limited since the SH 45SW Toll Road had just opened in June 2019. It was observed that there were no crashes recorded along SH 45SW Toll Road since its opening. Crashes did occur along FM 1626 near the at-grade intersection at the southern end of the SH 45SW Toll Road, and within the interchange with Loop 1 Mopac Expressway, where there are minor roads, at-grade intersections and driveways, and other constrained geometric features that are not a part of the SH 45 SW Toll Road.

### **3.3 Strip Map**

The strip map is a visualization tool used to facilitate a review of the speed data relative to roadway characteristics and to note any roadway attributes that may impact the travel speeds observed from the speed study. To determine the appropriate posted speed limit for the SH 45SW Toll Road, a strip map was developed to analyze the relationship between the corridor's critical physical features and the speed data results. Crash data and rates are normally included on strip maps. However, as previously noted, there were no crashes on SH 45SW Toll Road during its two-year period of operation.

The factors taken into consideration during the analysis include the horizontal and vertical curvature of the roadway, pavement width, and the location of traffic signals, bridge structures and crossing roads. Strip maps also help identify study corridor features such as city and county boundaries, limits of speed zones and important traffic generators. **Appendix C** contains the strip map created for this study.

### **3.4 Ongoing Corridor Development**

Since SH 45SW Toll Road is an access-controlled highway with no adjacent frontage roads, corridor development would not directly affect corridor performance since such development must access SH 45SW Toll Road via existing ramps and interchanges. Thus, growth in traffic from such development may affect future performance, but little development has occurred since SH 45SW Toll Road opened in June 2019.

#### **4. RECOMMENDED SPEED ZONE**

The free-flow speeds were measured in the field and 85<sup>th</sup> percentile speeds were determined for the SH 45SW Toll Road at four locations along the corridor. A strip map containing the speed data analysis results, and roadway characteristics was also developed as required by the guidelines provided in TxDOT's Procedures for Establishing Speed Zones. Per the TxDOT policy, the posted speed limit should be within 5 mph of the 85<sup>th</sup> percentile speed.

The average 85<sup>th</sup> percentile speed for the SH 45SW Toll Road was determined to be 70 mph and 68 mph for the northbound and southbound directions, respectively. The regulatory speed limit for the toll road was set to 65 mph since it was opened. Thus, the speed study data support the regulatory speed limits posted along the SH 45SW Toll road. The measured 85<sup>th</sup> percentile speeds would also support a speed limit of 70 mph.

In addition to the speed data, crash data was also analyzed to understand crash patterns related to speed. No crashes were recorded along SH 45SW Toll Road since its opening in June 2019, therefore no change to the regulatory speed is necessary for the SH 45SW Toll Road based on safety considerations and there is no reason to believe that increasing the posted speed to 70 mph, if the CTRMA chooses to do so, would create negative impacts to safety.

## **APPENDICES**

**Appendix A - Speed Data Measurement Locations**

**Appendix B - Field Measured Speed Data**

**Appendix C - Study Area Strip Map**



**Appendix A**  
**Speed Data Measurement Locations**

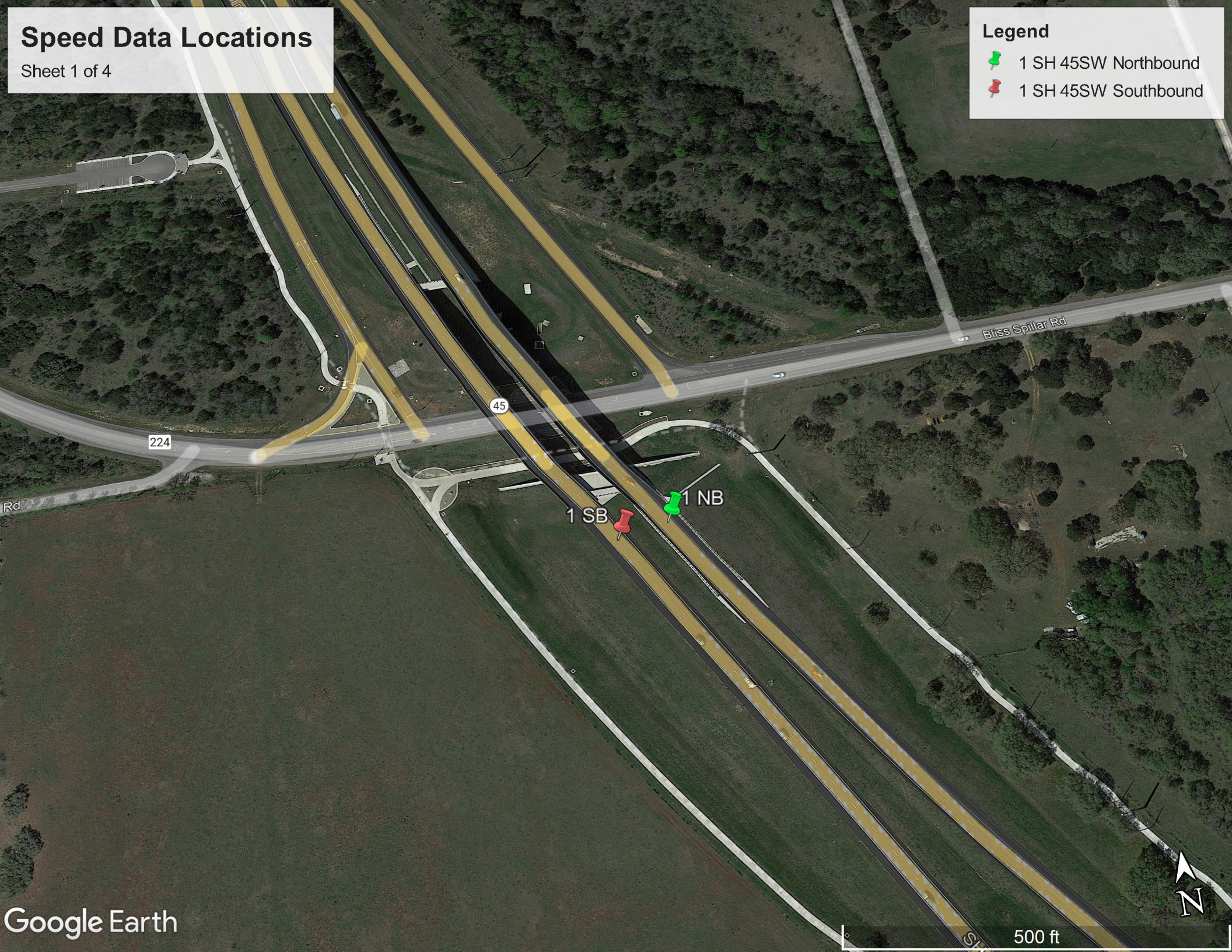


# Speed Data Locations

Sheet 1 of 4

**Legend**

-  1 SH 45SW Northbound
-  1 SH 45SW Southbound







# Speed Data Locations

Sheet 2 of 4

**Legend**

-  2 SH 45SW Northbound
-  2 SH 45SW Southbound





2 NB  
2 SB

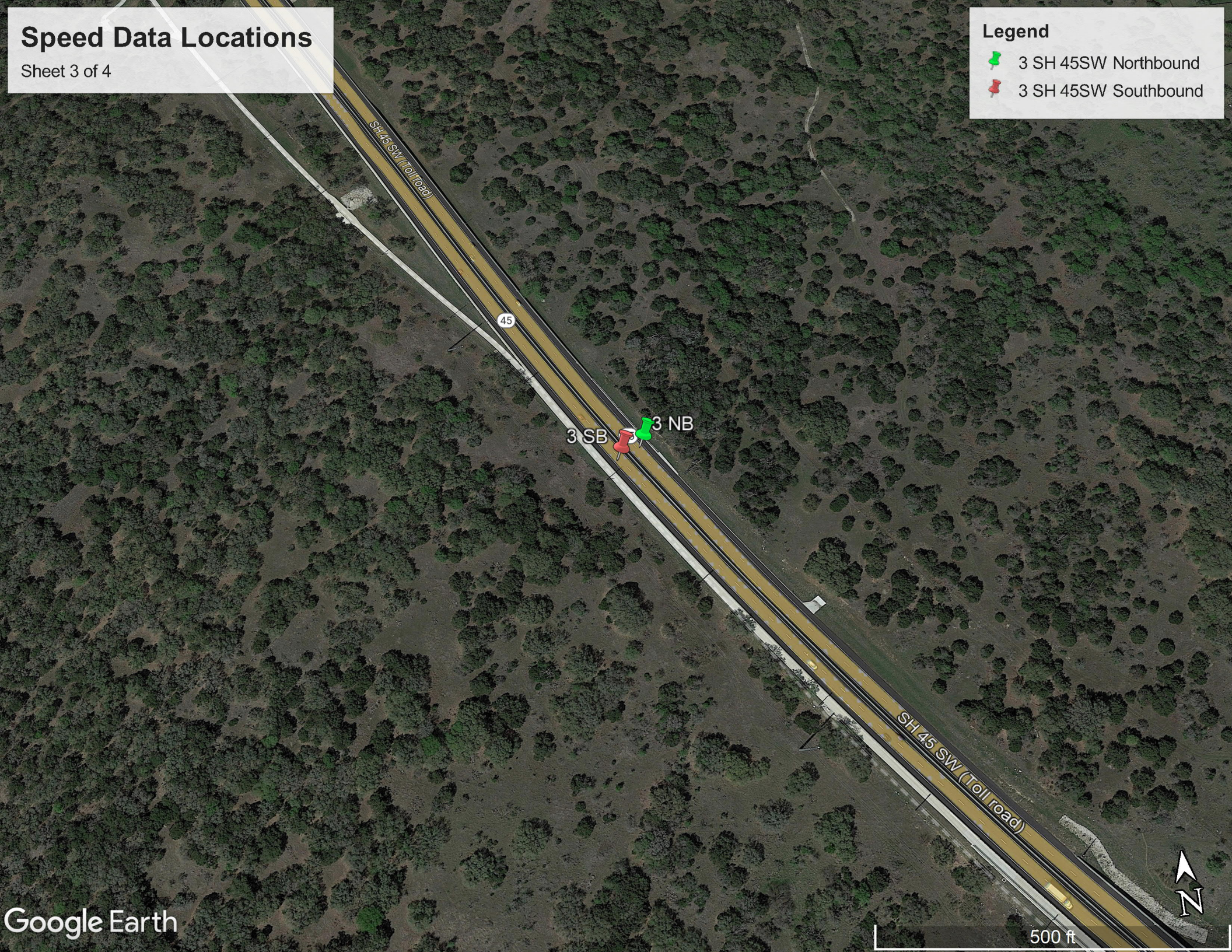


# Speed Data Locations

Sheet 3 of 4

**Legend**

-  3 SH 45SW Northbound
-  3 SH 45SW Southbound



3 SB 3 NB

SH 45 SW (Toll road)

45





500 ft

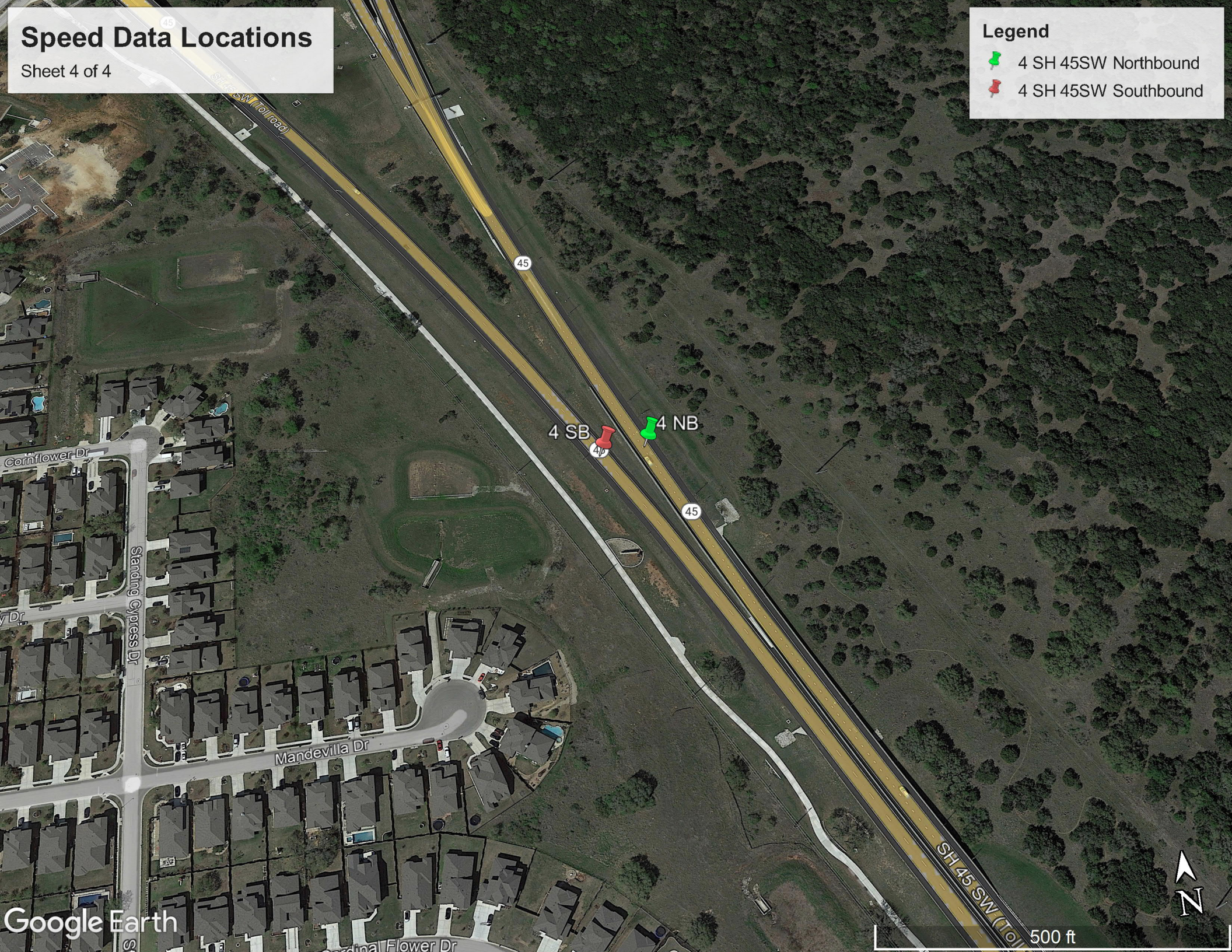


# Speed Data Locations

Sheet 4 of 4

## Legend

-  4 SH 45SW Northbound
-  4 SH 45SW Southbound





**Appendix B**  
**Field Measured Speed Data**

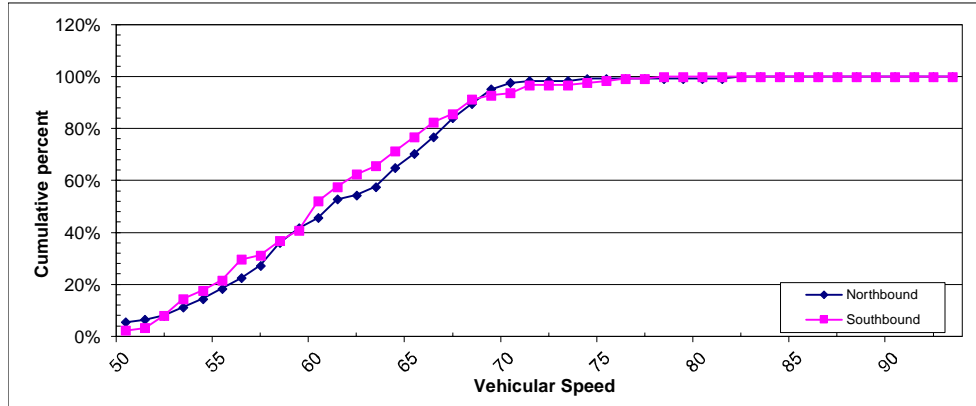
## Spot Speed Study SH 45 just south of Bliss Spillar

Northbound 85% speed is: **68 MPH**  
Southbound 85% speed is: **67 MPH**

Date: 9/30/2020  
Posted Speed: 65 MPH

Begin Time: 8:00 AM  
End Time: 10:00 AM

Speed	Northbound	Southbound
50	7	3
51	1	1
52	2	6
53	4	8
54	4	4
55	5	5
56	5	10
57	6	2
58	11	7
59	7	5
60	5	14
61	9	7
62	2	6
63	4	4
64	9	7
65	7	7
66	8	7
67	9	4
68	7	7
69	7	2
70	3	1
71	1	4
72	0	0
73	0	0
74	1	1
75	0	1
76	0	1
77	0	0
78	0	1
79	0	0
80	0	0
81	0	0
82	1	0
83	0	0
84	0	0
85	0	0
86	0	0
87	0	0
88	0	0
89	0	0
90	0	0
91	0	0
92	0	0
93	0	0
94	0	0
95	0	0
<b>Total:</b>	<b>125</b>	<b>125</b>



Northbound					Southbound						
	Cumulative			Cumulative			Cumulative			Cumulative	
	Total of Vehicles Surveyed	Percent of Vehicles Surveyed		Total of Vehicles Surveyed	Percent of Vehicles Surveyed		Total of Vehicles Surveyed	Percent of Vehicles Surveyed		Total of Vehicles Surveyed	Percent of Vehicles Surveyed
50	7	6%	73	123	98%	50	3	2%	73	121	97%
51	8	6%	74	124	99%	51	4	3%	74	122	98%
52	10	8%	75	124	99%	52	10	8%	75	123	98%
53	14	11%	76	124	99%	53	18	14%	76	124	99%
54	18	14%	77	124	99%	54	22	18%	77	124	99%
55	23	18%	78	124	99%	55	27	22%	78	125	100%
56	28	22%	79	124	99%	56	37	30%	79	125	100%
57	34	27%	80	124	99%	57	39	31%	80	125	100%
58	45	36%	81	124	99%	58	46	37%	81	125	100%
59	52	42%	82	125	100%	59	51	41%	82	125	100%
60	57	46%	83	125	100%	60	65	52%	83	125	100%
61	66	53%	84	125	100%	61	72	58%	84	125	100%
62	68	54%	85	125	100%	62	78	62%	85	125	100%
63	72	58%	86	125	100%	63	82	66%	86	125	100%
64	81	65%	87	125	100%	64	89	71%	87	125	100%
65	88	70%	88	125	100%	65	96	77%	88	125	100%
66	96	77%	89	125	100%	66	103	82%	89	125	100%
67	105	84%	90	125	100%	67	107	86%	90	125	100%
68	112	90%	91	125	100%	68	114	91%	91	125	100%
69	119	95%	92	125	100%	69	116	93%	92	125	100%
70	122	98%	93	125	100%	70	117	94%	93	125	100%
71	123	98%	94	125	100%	71	121	97%	94	125	100%
72	123	98%	95	125	100%	72	121	97%	95	125	100%

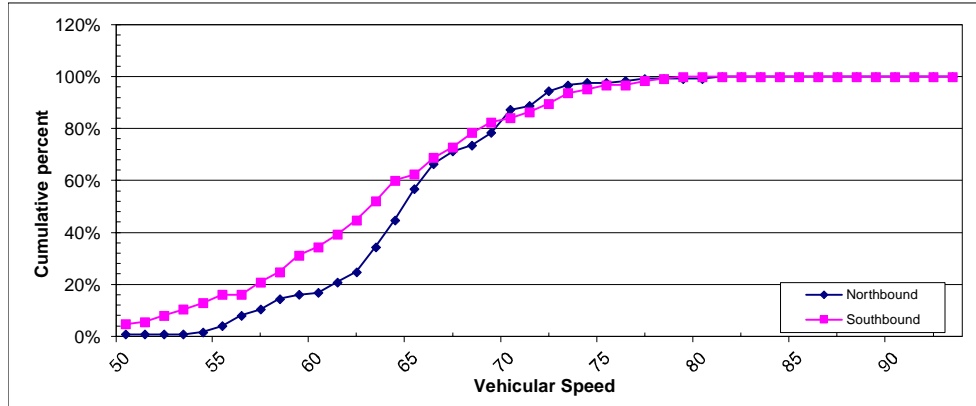
## Spot Speed Study SH 45 just south of toll booth

Northbound 85% speed is: **70 MPH**  
Southbound 85% speed is: **71 MPH**

Date: 9/30/2020  
Posted Speed: 65 MPH

Begin Time: 8:00 AM  
End Time: 10:00 AM

Speed	Northbound	Southbound
50	1	6
51	0	1
52	0	3
53	0	3
54	1	3
55	3	4
56	5	0
57	3	6
58	5	5
59	2	8
60	1	4
61	5	6
62	5	7
63	12	9
64	13	10
65	15	3
66	12	8
67	6	5
68	3	7
69	6	5
70	11	2
71	2	3
72	7	4
73	3	5
74	1	2
75	0	2
76	1	0
77	1	2
78	0	1
79	0	1
80	0	0
81	1	0
82	0	0
83	0	0
84	0	0
85	0	0
86	0	0
87	0	0
88	0	0
89	0	0
90	0	0
91	0	0
92	0	0
93	0	0
94	0	0
95	0	0
<b>Total:</b>	<b>125</b>	<b>125</b>



	Northbound				Southbound						
	Cumulative			Cumulative		Cumulative			Cumulative		
	Total of Vehicles Surveyed	Percent of Vehicles Surveyed		Total of Vehicles Surveyed	Percent of Vehicles Surveyed	Total of Vehicles Surveyed	Percent of Vehicles Surveyed		Total of Vehicles Surveyed	Percent of Vehicles Surveyed	
50	1	1%	73	121	97%	50	6	5%	73	117	94%
51	1	1%	74	122	98%	51	7	6%	74	119	95%
52	1	1%	75	122	98%	52	10	8%	75	121	97%
53	1	1%	76	123	98%	53	13	10%	76	121	97%
54	2	2%	77	124	99%	54	16	13%	77	123	98%
55	5	4%	78	124	99%	55	20	16%	78	124	99%
56	10	8%	79	124	99%	56	20	16%	79	125	100%
57	13	10%	80	124	99%	57	26	21%	80	125	100%
58	18	14%	81	125	100%	58	31	25%	81	125	100%
59	20	16%	82	125	100%	59	39	31%	82	125	100%
60	21	17%	83	125	100%	60	43	34%	83	125	100%
61	26	21%	84	125	100%	61	49	39%	84	125	100%
62	31	25%	85	125	100%	62	56	45%	85	125	100%
63	43	34%	86	125	100%	63	65	52%	86	125	100%
64	56	45%	87	125	100%	64	75	60%	87	125	100%
65	71	57%	88	125	100%	65	78	62%	88	125	100%
66	83	66%	89	125	100%	66	86	69%	89	125	100%
67	89	71%	90	125	100%	67	91	73%	90	125	100%
68	92	74%	91	125	100%	68	98	78%	91	125	100%
69	98	78%	92	125	100%	69	103	82%	92	125	100%
70	109	87%	93	125	100%	70	105	84%	93	125	100%
71	111	89%	94	125	100%	71	108	86%	94	125	100%
72	118	94%	95	125	100%	72	112	90%	95	125	100%

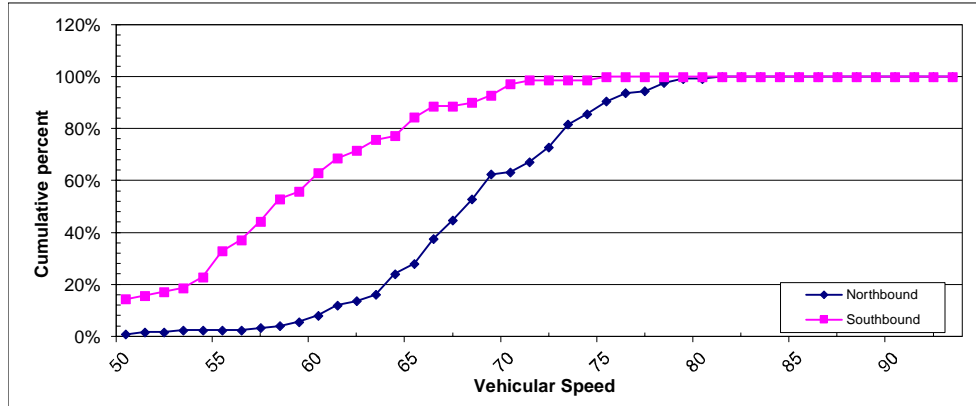
## Spot Speed Study SH 45 about .4 miles north of Bear Creek

Northbound 85% speed is: **74 MPH**  
Southbound 85% speed is: **66 MPH**

Date: 9/30/2021  
Posted Speed: 65 MPH

Begin Time: 8:00 AM  
End Time: 10:00 AM

Speed	Northbound	Southbound
50	1	10
51	1	1
52	0	1
53	1	1
54	0	3
55	0	7
56	0	3
57	1	5
58	1	6
59	2	2
60	3	5
61	5	4
62	2	2
63	3	3
64	10	1
65	5	5
66	12	3
67	9	0
68	10	1
69	12	2
70	1	3
71	5	1
72	7	0
73	11	0
74	5	0
75	6	1
76	4	0
77	1	0
78	4	0
79	2	0
80	0	0
81	1	0
82	0	0
83	0	0
84	0	0
85	0	0
86	0	0
87	0	0
88	0	0
89	0	0
90	0	0
91	0	0
92	0	0
93	0	0
94	0	0
95	0	0
<b>Total:</b>	<b>125</b>	<b>70</b>



Northbound					Southbound						
Cumulative			Cumulative		Cumulative			Cumulative			
Total of Vehicles Surveyed	Percent of Vehicles Surveyed		Total of Vehicles Surveyed	Percent of Vehicles Surveyed	Total of Vehicles Surveyed	Percent of Vehicles Surveyed		Total of Vehicles Surveyed	Percent of Vehicles Surveyed		
50	1	1%	73	102	82%	50	10	14%	73	69	99%
51	2	2%	74	107	86%	51	11	16%	74	69	99%
52	2	2%	75	113	90%	52	12	17%	75	70	100%
53	3	2%	76	117	94%	53	13	19%	76	70	100%
54	3	2%	77	118	94%	54	16	23%	77	70	100%
55	3	2%	78	122	98%	55	23	33%	78	70	100%
56	3	2%	79	124	99%	56	26	37%	79	70	100%
57	4	3%	80	124	99%	57	31	44%	80	70	100%
58	5	4%	81	125	100%	58	37	53%	81	70	100%
59	7	6%	82	125	100%	59	39	56%	82	70	100%
60	10	8%	83	125	100%	60	44	63%	83	70	100%
61	15	12%	84	125	100%	61	48	69%	84	70	100%
62	17	14%	85	125	100%	62	50	71%	85	70	100%
63	20	16%	86	125	100%	63	53	76%	86	70	100%
64	30	24%	87	125	100%	64	54	77%	87	70	100%
65	35	28%	88	125	100%	65	59	84%	88	70	100%
66	47	38%	89	125	100%	66	62	89%	89	70	100%
67	56	45%	90	125	100%	67	62	89%	90	70	100%
68	66	53%	91	125	100%	68	63	90%	91	70	100%
69	78	62%	92	125	100%	69	65	93%	92	70	100%
70	79	63%	93	125	100%	70	68	97%	93	70	100%
71	84	67%	94	125	100%	71	69	99%	94	70	100%
72	91	73%	95	125	100%	72	69	99%	95	70	100%

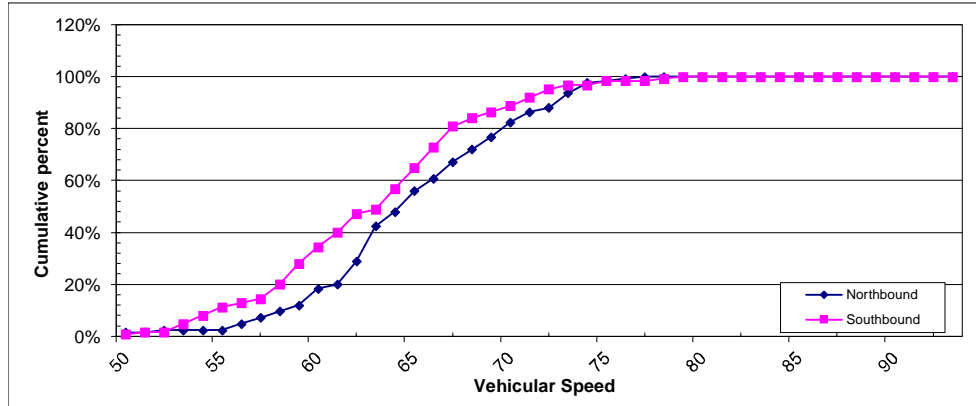
## Spot Speed Study SH 45 south of Loop 1 interchange

Northbound 85% speed is: **71 MPH**  
Southbound 85% speed is: **69 MPH**

Date: 9/30/2021  
Posted Speed: 65 MPH

Begin Time: 8:00 AM  
End Time: 10:00 AM

Speed	Northbound	Southbound
50	2	1
51	0	1
52	1	0
53	0	4
54	0	4
55	0	4
56	3	2
57	3	2
58	3	7
59	3	10
60	8	8
61	2	7
62	11	9
63	17	2
64	7	10
65	10	10
66	6	10
67	8	10
68	6	4
69	6	3
70	7	3
71	5	4
72	2	4
73	7	2
74	5	0
75	1	2
76	1	0
77	1	0
78	0	1
79	0	1
80	0	0
81	0	0
82	0	0
83	0	0
84	0	0
85	0	0
86	0	0
87	0	0
88	0	0
89	0	0
90	0	0
91	0	0
92	0	0
93	0	0
94	0	0
95	0	0
<b>Total:</b>	<b>125</b>	<b>125</b>



Northbound					Southbound						
	Cumulative			Cumulative			Cumulative			Cumulative	
	Total of Vehicles Surveyed	Percent of Vehicles Surveyed		Total of Vehicles Surveyed	Percent of Vehicles Surveyed		Total of Vehicles Surveyed	Percent of Vehicles Surveyed		Total of Vehicles Surveyed	Percent of Vehicles Surveyed
50	2	2%	73	117	94%	50	1	1%	73	121	97%
51	2	2%	74	122	98%	51	2	2%	74	121	97%
52	3	2%	75	123	98%	52	2	2%	75	123	98%
53	3	2%	76	124	99%	53	6	5%	76	123	98%
54	3	2%	77	125	100%	54	10	8%	77	123	98%
55	3	2%	78	125	100%	55	14	11%	78	124	99%
56	6	5%	79	125	100%	56	16	13%	79	125	100%
57	9	7%	80	125	100%	57	18	14%	80	125	100%
58	12	10%	81	125	100%	58	25	20%	81	125	100%
59	15	12%	82	125	100%	59	35	28%	82	125	100%
60	23	18%	83	125	100%	60	43	34%	83	125	100%
61	25	20%	84	125	100%	61	50	40%	84	125	100%
62	36	29%	85	125	100%	62	59	47%	85	125	100%
63	53	42%	86	125	100%	63	61	49%	86	125	100%
64	60	48%	87	125	100%	64	71	57%	87	125	100%
65	70	56%	88	125	100%	65	81	65%	88	125	100%
66	76	61%	89	125	100%	66	91	73%	89	125	100%
67	84	67%	90	125	100%	67	101	81%	90	125	100%
68	90	72%	91	125	100%	68	105	84%	91	125	100%
69	96	77%	92	125	100%	69	108	86%	92	125	100%
70	103	82%	93	125	100%	70	111	89%	93	125	100%
71	108	86%	94	125	100%	71	115	92%	94	125	100%
72	110	88%	95	125	100%	72	119	95%	95	125	100%

# **Appendix C**

## **Study Area Strip Map**



# SH 45SW Toll Strip Map

- LEGEND
- SH 45SW Toll Road
  - Ramps
  - = Bridge
  - Direct Connector

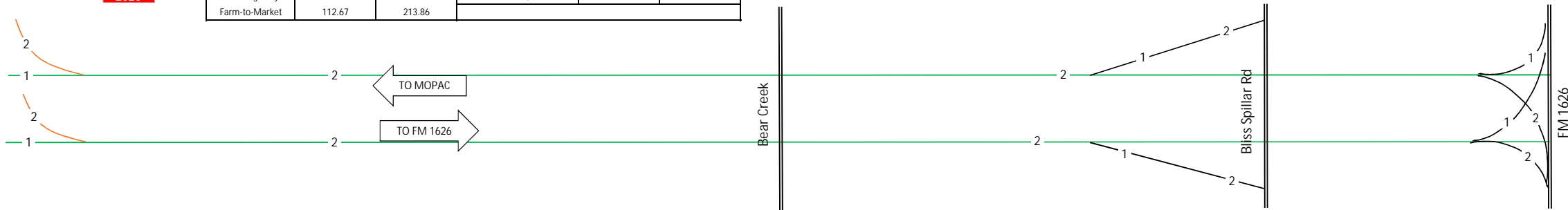
Approximate Distance (feet)

0 | 500 | 1000 | 1500 | 2000 | 2500 | 3000 | 3500 | 4000 | 4500 | 5000 | 5500 | 6000 | 6500 | 7000 | 7500 | 8000 | 8500 | 9000 | 9500 | 10000 | 10500 | 11000 | 11500 | 12000 | 12500 | 13000 | 13500 | 14000 | 14500 | 15000 | 15500 | 16000 | 16500 | 17000 | 17500 | 18000

Northbound SH 45SW	Crash Rate Per 100 MVMT	0*		0*		0*		0*	
	85% Speed (MPH)	71		74		70		68	
	Bridges	Bear Creek							
	Traffic signals								
	Surface width and type	40' TYPICAL SURFACE WIDTH, ASPHALT		32' TYPICAL SURFACE WIDTH, ASPHALT		40' TYPICAL SURFACE WIDTH, ASPHALT		40' TYPICAL SURFACE WIDTH, ASPHALT	
	Zone Length	3.6 MILES							
Posted Speed limit	65 MPH		65 MPH		65 MPH		65 MPH		



TxDOT 2020 STATEWIDE TRAFFIC CRASH RATES					
Highway System	Traffic Crashes Per 100 million vehicle miles		Road Type	Traffic Crashes Per 100 million vehicle miles	
	Rural	Urban		Rural	Urban
Interstate	49.33	127.94	2 lane, 2 way	90.42	184.09
US Highway	61.91	169.27	4 or more lanes, divided	52.76	140.68
State Highway	79.92	188.41	4 or more lanes, undivided	87.76	271.82
Farm-to-Market	112.67	213.86			



**Study Area**  
SH 45SW between MoPac & FM 1626

Southbound SH 45SW	Posted Speed limit	65 MPH		65 MPH		65 MPH		65 MPH		
	Zone Length	3.6 mi								
	Surface width and type	40' TYPICAL SURFACE WIDTH, ASPHALT		32' TYPICAL SURFACE WIDTH, ASPHALT		40' TYPICAL SURFACE WIDTH, ASPHALT		40' TYPICAL SURFACE WIDTH, ASPHALT		
	Traffic signals									
	Bridges	Bear Creek								
	85% Speed (MPH)	69		66		71		67		
Crash Rate Per 100 MVMT	0*		0*		0*		0*			

\*The TxDOT CRIS recorded no crashes on SH 45SW Toll Road between the June 2019 opening c

- LEGEND
- SH 45SW Toll Road
  - Ramps
  - = Bridge
  - Direct Connector





CENTRAL TEXAS REGIONAL  
**MOBILITY AUTHORITY**

# **183 Toll 2022 Speed Zone Study**

Prepared For:

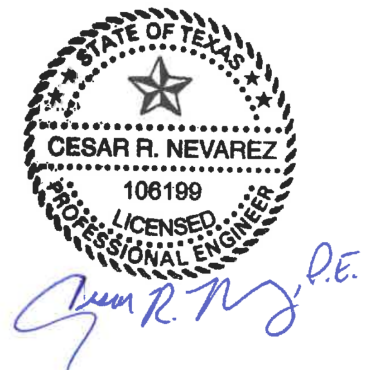
Central Texas Regional Mobility Authority

Prepared by:

# **ATKINS**

Cesar R. Nevarez, P.E.

March 9, 2022



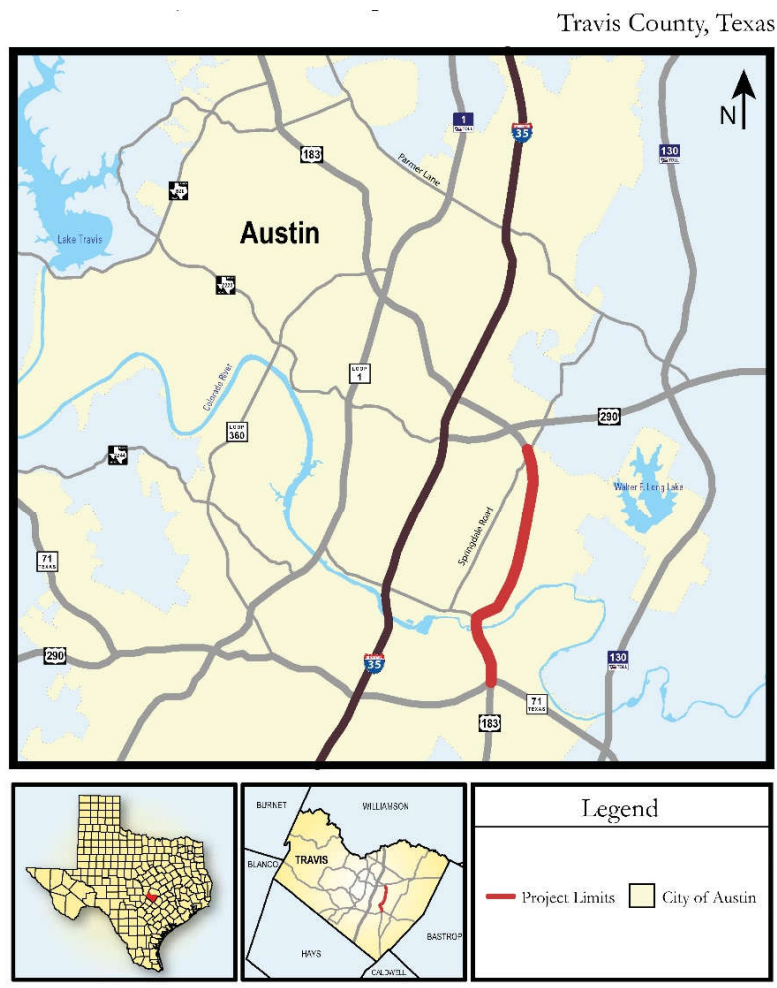
# Table of Contents

1.	Introduction .....	3
1.1	Existing Conditions.....	4
1.2	Typical Sections.....	4
2.	Speed Zone Study Methodology.....	4
2.1	85 <sup>th</sup> Percentile Speed .....	4
2.2	Strip Map.....	7
3.	Recommended Speed Zone .....	7
	Appendix A: Southbound Radar Speed Data	
	Appendix B: Northbound Radar Speed Data	
	Appendix C: Strip Map	

# 1. Introduction

183 Toll was completed and opened to the public in phases with the north end opening in August 2019, and the south end opening in early 2021. The toll road consists of 8 miles of tolled mainlanes and non-tolled frontage roads, beginning at US 290 and ending at SH 71 in East Austin. These tolled lanes will serve to decrease travel times to and from the Austin-Bergstrom International Airport. The Central Texas Regional Mobility Authority has requested a speed study be conducted to establish speed zones on the newly completed mainlanes. Based on this study, determined speed limits may not exceed 75 miles per hour according to section 545.354 of the Texas Transportation Code. This report will summarize the results of the speed study conducted for the 183 Toll. See Figure 1 below for a layout of the study area.

The Texas Department of Transportation (TxDOT) Austin District will conduct a separate speed zone study to determine the speed zones at the US 183 Frontage Roads, Airport Interchange and SH 71.



**Figure 1: 183 Toll Location Map**

## **1.1 Existing Conditions**

North of US 290, the existing 65 miles per hour speed limit on US 183 was established via Minute Order 111660 on December 8, 2008. Currently the section North of US 290 is under construction (183/I-35 Connector Project) and the speed limit was reduced to 55 miles per hour work zone speed via a Minute Order. South of SH 71, the existing speed limit is 55 miles per hour.

## **1.2 Typical Sections**

The typical section of the mainlanes on the 183 Toll consists of three 12-foot-wide lanes with a 10-foot-wide shoulder on each side. 183 Toll consists of at grade, depressed and elevated sections. All lanes and shoulders were designed to meet TxDOT design standards.

## **2. Speed Zone Study Methodology**

The *Procedures for Establishing Speed Zones* revised by the Texas Department of Transportation (TxDOT) in August 2015 was used as a guide in conducting this speed study.

Radar data was collected on 125 vehicles travelling in each direction, at each of 30 selected locations, on the mainlanes to determine the 85<sup>th</sup> percentile speed. The locations selected were located midway between on and off ramps to avoid collecting data on vehicles speeding up to enter the mainlanes or slowing down to exit the mainlanes. The results from this data collection can be seen in Appendix A, Southbound Radar Speed Data, and Appendix B, Northbound Radar Speed Data. The data was collected on clear weather days between November 4<sup>th</sup> and 9<sup>th</sup>, 2021. The CTRMA has not received crash data for the mainlanes collected since opening that would impact the recommendations. Crash data is collected monthly and will be monitored by Mobility Authority Staff.

### **2.1 85<sup>th</sup> Percentile Speed**

The data collected from the speed study was used to determine the 85<sup>th</sup> percentile speed. This represents the speed at which 85% of the vehicles surveyed are traveling at or below. According to TxDOT recommendations, the speed limit should be set near to the 85<sup>th</sup> percentile speed as observed through a speed study. The observed 85<sup>th</sup> percentile speeds can be seen below in Table 1, southbound, and Table 2, northbound, along with the maximum speed observed.

In addition, the ramp advisory speeds were determined using the Texas Curve Evaluation Suite (TCES) methodology. The required information (curve length, coordinates, etc.) was collected by a traffic data collection company. The data was uploaded into a TCES spreadsheet where results were computed and analyzed, per the Texas Manual on Uniform Traffic Control Devices (TMUTCD).

**Table 1: 183 Toll Southbound Speed Data**

183 Toll Southbound Speed Data		
Location	85 <sup>th</sup> Percentile Speed (mph)	Observed Maximum Speed (mph)
South of US 290	70	>80
North of Manor Rd	71	>80
South of Manor Rd	72	>80
South of Purple Sage Rd #1	73	>80
South of Purple Sage Rd #2	73	>80
North of Loyola Ln	73	79
South of Loyola Ln #1	79	>80
South of Loyola Ln #2	76	>80
North of E 51st St	77	>80
South of E 51st St	75	>80
North of FM 969	77	>80
South of FM 969	77	>80
South of Marcel Gres Dr	80	>80
North of Techni Center Dr	79	>80
South of Bluestein Dr	80	>80
North of Hudson St	77	>80
South of Harold Ct	79	>80
North of Thurgood Ave	78	>80
North of Smith Rd	80	>80
South of Eastgate Rd	78	>80
North of Bolm Rd	78	>80
North of Interchange Blvd	78	>80
North of Howard Rd	76	>80
North of Levander Loop	64	70
North of Montopolis Dr	65	78
North of Saxon Ln	72	>80
South of Vargas Rd	74	>80
South of Bergstrom Storage	68	>80
South of Palm Harbor Homes	60	72
South of Wells Fargo Bank	71	>80
<b>Average</b>	<b>75</b>	<b>&gt;80</b>

Locations were not included in the average calculations since motorists are approaching an area currently under construction (183/I-35 Connector Project) and the speed limit was reduced to 55 miles per hour during the speed zone study.

Locations were not included in the average calculations since these are within the speed transition zones.

**Table 2: 183 Toll Northbound Speed Data**

183 Toll Northbound Speed Data		
Location	85 <sup>th</sup> Percentile Speed (mph)	Observed Maximum Speed (mph)
South of US 290	71	79
North of Manor Rd	69	>80
South of Manor Rd	70	77
South of Purple Sage Dr	76	>80
North of Loyola Ln #1	79	>80
North of Loyola Ln #2	72	78
South of Loyola Ln	69	78
North of Little Walnut Creek	73	79
North of FM 969 #1	80	>80
North of FM 969 #2	79	>80
North of FM 969 #3	77	>80
South of FM 969	70	75
South of Tracor Ln	69	>80
North of Techni Center Dr	68	78
South of Central Ave	68	>80
North of Hudson St	68	78
North of Walnut Creek Trail	70	78
South of Walnut Creek Trail	69	78
South of Alleyton Dr	69	77
South of Smith Rd	78	>80
North of Bolm Rd	77	>80
South of N Howard Rd #2	67	72
North of Howard Rd	73	79
South of N Howard Rd #2	71	77
North of Montopolis Dr	75	>80
South of Montopolis Dr	68	73
North of Thompson Ln	72	>80
South of Thompson Ln	71	>80
North of Patton Ave	68	74
North of Southside Wrecker	73	79
<b>Average</b>	<b>72</b>	<b>79</b>

Locations were not included in the average calculations since motorists are approaching an area currently under construction (183/I-35 Connector Project) and the speed limit was reduced to 55 miles per hour during the speed zone study.

Locations were not included in the average calculations since these are within the speed transition zones.

## **2.2 Strip Map**

A strip map of the study area was created to reflect the existing geometric features of the roadway, pavement details, right of way widths, existing signs, crossroads, bridge structures, rail ways, and water ways. The strip map was then used to review the speed data and speed zones in coordination with the existing features of the roadway to determine a suitable speed limit. The complete strip maps for the study area can be seen in Appendix C.

## **3. Recommended Speed Zone**

Upon examination of the data collected and shown in the appendices, it was determined that the results support the establishment of a 75 mile per hour speed zone along the entirety of the 183 Toll corridor. This speed zone study followed TxDOT's *Procedures for Establishing Speed Zones*. In addition, the change in speed between two adjacent zones should not be greater than 15 miles per hour at each end of the study area.

In conclusion, the 183/I-35 Connector Project (section North of US 290) under construction did impact the speed zone study during the speed data collection, which is reflected on Table 1 for the 183 Toll Northbound approach. Motorists approaching the 183 Toll North end of the study area reduced their speeds as construction signage became visible.

## **Appendix A**

### **Southbound Radar Speed Data**





# RADAR MOTOR VEHICLE SPEED Field Tally Sheet

Date: 11/04/2021 County: Travis Hwy: US 183 ML Location: South of US 290

Time (from): 09:00 AM (to): 11:00 AM Weather: Clear

Surface type: Concrete Surface condition:  Wet or  Dry /  Smooth or  Rough

M.P.H.	AUTOMOBILES		Cumulative Total	AUTOMOBILES		Cumulative Total	TRUCKS & BUSES		M.P.H.
	Direction: Southbound			Direction:			Direction:	Direction:	
>80			125						>80
79									79
78									78
77			123						77
76			122						76
75			121						75
74			116						74
73			114						73
72			112						72
71			111						71
70			106						70
69			101						69
68			93						68
67			89						67
66			84						66
65			74						65
64			66						64
63			59						63
62			52						62
61			47						61
60			40						60
59			30						59
58			24						58
57			20						57
56			17						56
55									55
54			14						54
53			12						53
52			10						52
51			8						51
50			7						50
49									49
48									48
47									47
46			4						46
45									45
44			1						44
43									43
42									42
41									41
40									40
39									39
38									38
37									37
36									36
35									35
34									34
33									33
32									32
31									31
<30									<30
Total Automobiles			125	Total Automobiles					
			x 0.85				x 0.85		
85th Percentile Automobile:			106	85th Percentile Automobile:					
85th Percentile Speed (m.p.h.):			70	85th Percentile Speed (m.p.h.):					

Recorder: Robby Nichol



# RADAR MOTOR VEHICLE SPEED Field Tally Sheet

Form 1882  
(Rev. 3/19)  
Page 1 of 2

Date: 11/04/2021 County: Travis Hwy: US 183 ML Location: North of Manor Rd

Time (from): 09:10 AM (to): 11:10 AM Weather: Clear

Surface type: Concrete Surface condition:  Wet or  Dry /  Smooth or  Rough

M.P.H.	AUTOMOBILES		Cumulative Total	AUTOMOBILES		Cumulative Total	TRUCKS & BUSES		M.P.H.
	Direction: Southbound			Direction:			Direction:	Direction:	
>80			125						>80
79			123						79
78									78
77			122						77
76			121						76
75			119						75
74									74
73			118						73
72			116						72
71			110						71
70			103						70
69			96						69
68			87						68
67			84						67
66			73						66
65			66						65
64			56						64
63			46						63
62			40						62
61			37						61
60			30						60
59			25						59
58			17						58
57			12						57
56			11						56
55			9						55
54									54
53			8						53
52									52
51			7						51
50									50
49			6						49
48			5						48
47									47
46			3						46
45			2						45
44									44
43									43
42									42
41									41
40									40
39									39
38									38
37									37
36									36
35									35
34									34
33									33
32									32
31									31
<30									<30
Total Automobiles			125	Total Automobiles					
			x 0.85				x 0.85		
85th Percentile Automobile:			106	85th Percentile Automobile:					
85th Percentile Speed (m.p.h.):			71	85th Percentile Speed (m.p.h.):					

Recorder: Robby Nichol



# RADAR MOTOR VEHICLE SPEED Field Tally Sheet

Date: 11/04/2021 County: Travis Hwy: US 183 ML Location: South of Manor Rd

Time (from): 09:15 AM (to): 11:15 AM Weather: Clear

Surface type: Concrete Surface condition:  Wet or  Dry /  Smooth or  Rough

M.P.H.	AUTOMOBILES		Cumulative Total	AUTOMOBILES		Cumulative Total	TRUCKS & BUSES		M.P.H.
	Direction: Southbound			Direction:			Direction:	Direction:	
>80			125						>80
79									79
78			123						78
77									77
76									76
75			121						75
74			118						74
73			115						73
72			108						72
71			105						71
70			99						70
69			98						69
68			95						68
67			91						67
66			85						66
65			72						65
64			62						64
63			56						63
62			47						62
61			39						61
60			34						60
59			29						59
58			25						58
57			21						57
56			19						56
55			11						55
54			7						54
53			6						53
52			4						52
51									51
50									50
49									49
48									48
47			3						47
46			1						46
45									45
44									44
43									43
42									42
41									41
40									40
39									39
38									38
37									37
36									36
35									35
34									34
33									33
32									32
31									31
<30									<30
Total Automobiles			125	Total Automobiles					
			x 0.85				x 0.85		
85th Percentile Automobile:			106	85th Percentile Automobile:					
85th Percentile Speed (m.p.h.):			72	85th Percentile Speed (m.p.h.):					

Recorder: Robby Nichol



# RADAR MOTOR VEHICLE SPEED Field Tally Sheet

Date: 11/04/2021 County: Travis Hwy: US 183 ML Location: South of Purple Sage Rd

Time (from): 9:20 AM (to): 11:20 AM Weather: Clear

Surface type: Concrete Surface condition:  Wet or  Dry /  Smooth or  Rough

M.P.H.	AUTOMOBILES		Cumulative Total	AUTOMOBILES		Cumulative Total	TRUCKS & BUSES		M.P.H.
	Direction: Southbound			Direction:			Direction:	Direction:	
>80			125						>80
79			123						79
78			122						78
77			120						77
76			117						76
75			115						75
74			111						74
73			108						73
72			103						72
71			96						71
70			91						70
69			80						69
68			71						68
67			57						67
66			44						66
65			30						65
64			23						64
63			17						63
62			12						62
61			9						61
60			7						60
59			6						59
58			5						58
57									57
56									56
55									55
54			4						54
53			3						53
52			2						52
51									51
50			1						50
49									49
48									48
47									47
46									46
45									45
44									44
43									43
42									42
41									41
40									40
39									39
38									38
37									37
36									36
35									35
34									34
33									33
32									32
31									31
<30									<30
Total Automobiles			125	Total Automobiles					
			x 0.85				x 0.85		
85th Percentile Automobile:			106	85th Percentile Automobile:					
85th Percentile Speed (m.p.h.):			73	85th Percentile Speed (m.p.h.):					

Recorder: Robby Nichol



# RADAR MOTOR VEHICLE SPEED Field Tally Sheet

Form 1882  
(Rev. 3/19)  
Page 1 of 2

Date: 11/04/2021 County: Travis Hwy: US 183 ML Location: South of Purle Sage Rd

Time (from): 09:25 AM (to): 11:25 AM Weather: Clear

Surface type: Concrete Surface condition:  Wet or  Dry /  Smooth or  Rough

M.P.H.	AUTOMOBILES		Cumulative Total	AUTOMOBILES		Cumulative Total	TRUCKS & BUSES		M.P.H.
	Direction: Southbound			Direction:			Direction:	Direction:	
>80			125						>80
79									79
78									78
77			123						77
76			122						76
75			117						75
74			113						74
73			109						73
72			105						72
71			98						71
70			88						70
69			82						69
68			72						68
67			62						67
66			54						66
65			46						65
64			38						64
63			28						63
62			20						62
61			18						61
60			11						60
59			10						59
58									58
57			9						57
56			6						56
55			5						55
54									54
53									53
52									52
51									51
50			3						50
49			2						49
48									48
47			1						47
46									46
45									45
44									44
43									43
42									42
41									41
40									40
39									39
38									38
37									37
36									36
35									35
34									34
33									33
32									32
31									31
<30									<30
Total Automobiles			125	Total Automobiles					
			x 0.85						
85th Percentile Automobile:			106	85th Percentile Automobile:					
85th Percentile Speed (m.p.h.):			73	85th Percentile Speed (m.p.h.):					

Recorder: Blake Anderson



# RADAR MOTOR VEHICLE SPEED Field Tally Sheet

Form 1882  
(Rev. 3/19)  
Page 1 of 2

Date: 11/04/2021 County: Travis Hwy: US 183 ML Location: North of Loyola Ln

Time (from): 02:00 PM (to): 03:30 PM Weather: Clear

Surface type: Concrete Surface condition:  Wet or  Dry /  Smooth or  Rough

M.P.H.	AUTOMOBILES		Cumulative Total	AUTOMOBILES		Cumulative Total	TRUCKS & BUSES		M.P.H.
	Direction: Southbound			Direction:			Direction:	Direction:	
>80									>80
79	I		125						79
78	II		124						78
77	III		122						77
76	IIII		119						76
75	II		113						75
74	IIII		111						74
73	IIII		106						73
72	IIII		101						72
71	II		96						71
70	III		94						70
69	IIIIIIII		91						69
68	IIII		81						68
67	IIIIIIIIII		75						67
66	IIIIII		61						66
65	IIIIIIIIII		52						65
64	IIIIII		36						64
63	IIIIII		27						63
62	III		19						62
61	II		16						61
60	II		14						60
59	II		12						59
58	II		10						58
57	I		8						57
56	III		7						56
55	I		4						55
54									54
53	I		3						53
52	I		2						52
51									51
50									50
49									49
48	I		1						48
47									47
46									46
45									45
44									44
43									43
42									42
41									41
40									40
39									39
38									38
37									37
36									36
35									35
34									34
33									33
32									32
31									31
<30									<30
Total Automobiles			125	Total Automobiles					
			x 0.85				x 0.85		
85th Percentile Automobile:			106	85th Percentile Automobile:					
85th Percentile Speed (m.p.h.):			73	85th Percentile Speed (m.p.h.):					

Recorder: Robby Nichol



# RADAR MOTOR VEHICLE SPEED Field Tally Sheet

Date: 11/04/2021 County: Travis Hwy: US 183 ML Location: South of Loyola Ln

Time (from): 02:00 PM (to): 03:30 PM Weather: Clear

Surface type: Concrete Surface condition:  Wet or  Dry /  Smooth or  Rough

M.P.H.	AUTOMOBILES		Cumulative Total	AUTOMOBILES		Cumulative Total	TRUCKS & BUSES		M.P.H.
	Direction: Southbound			Direction:			Direction:	Direction:	
>80			125						>80
79			110						79
78			105						78
77			99						77
76			94						76
75			89						75
74			79						74
73			72						73
72			61						72
71			52						71
70			46						70
69			41						69
68			35						68
67			27						67
66			24						66
65			17						65
64			16						64
63			10						63
62									62
61			8						61
60			6						60
59			4						59
58									58
57									57
56			2						56
55									55
54			1						54
53									53
52									52
51									51
50									50
49									49
48									48
47									47
46									46
45									45
44									44
43									43
42									42
41									41
40									40
39									39
38									38
37									37
36									36
35									35
34									34
33									33
32									32
31									31
<30									<30
Total Automobiles			125	Total Automobiles					
			x 0.85				x 0.85		
85th Percentile Automobile:			106	85th Percentile Automobile:					
85th Percentile Speed (m.p.h.):			79	85th Percentile Speed (m.p.h.):					

Recorder: Blake Anderson



# RADAR MOTOR VEHICLE SPEED Field Tally Sheet

Form 1882  
(Rev. 3/19)  
Page 1 of 2

Date: 11/04/2021 County: Travis Hwy: US 183 ML Location: South of Loyola Ln

Time (from): 02:07 PM (to): 3:37 PM Weather: Clear

Surface type: Concrete Surface condition:  Wet or  Dry /  Smooth or  Rough

M.P.H.	AUTOMOBILES		Cumulative Total	AUTOMOBILES		Cumulative Total	TRUCKS & BUSES		M.P.H.
	Direction: Southbound			Direction:			Direction:	Direction:	
>80			125						>80
79			114						79
78			112						78
77			110						77
76			109						76
75			102						75
74			99						74
73			94						73
72			93						72
71			84						71
70			77						70
69			73						69
68			67						68
67			55						67
66			47						66
65			42						65
64			38						64
63			34						63
62			32						62
61			29						61
60			27						60
59									59
58			23						58
57			20						57
56									56
55									55
54			19						54
53			18						53
52									52
51			17						51
50			14						50
49			13						49
48			10						48
47									47
46			9						46
45									45
44			8						44
43			5						43
42			4						42
41			3						41
40									40
39									39
38			1						38
37									37
36									36
35									35
34									34
33									33
32									32
31									31
<30									<30
Total Automobiles			125	Total Automobiles					
			x 0.85				x 0.85		
85th Percentile Automobile:			106	85th Percentile Automobile:					
85th Percentile Speed (m.p.h.):			76	85th Percentile Speed (m.p.h.):					

Recorder: Robby Nichol





# RADAR MOTOR VEHICLE SPEED Field Tally Sheet

Form 1882  
(Rev. 3/19)  
Page 1 of 2

Date: 11/04/2021 County: Travis Hwy: US 183 ML Location: North of E 51st St

Time (from): 02:08 PM (to): 3:39 PM Weather: Clear

Surface type: Concrete Surface condition:  Wet or  Dry /  Smooth or  Rough

M.P.H.	AUTOMOBILES		Cumulative Total	AUTOMOBILES		Cumulative Total	TRUCKS & BUSES		M.P.H.
	Direction: Southbound			Direction:			Direction:	Direction:	
>80			125						>80
79			113						79
78			109						78
77			106						77
76			98						76
75			95						75
74			91						74
73			86						73
72			79						72
71			71						71
70			60						70
69			51						69
68			42						68
67			37						67
66			30						66
65			24						65
64			23						64
63			19						63
62			17						62
61			13						61
60			11						60
59			10						59
58									58
57									57
56									56
55			6						55
54			5						54
53			4						53
52			3						52
51			2						51
50									50
49			1						49
48									48
47									47
46									46
45									45
44									44
43									43
42									42
41									41
40									40
39									39
38									38
37									37
36									36
35									35
34									34
33									33
32									32
31									31
<30									<30
Total Automobiles			125	Total Automobiles					
			x 0.85				x 0.85		
85th Percentile Automobile:			106	85th Percentile Automobile:					
85th Percentile Speed (m.p.h.):			77	85th Percentile Speed (m.p.h.):					

Recorder: Blake Anderson



# RADAR MOTOR VEHICLE SPEED Field Tally Sheet

Form 1882  
(Rev. 3/19)  
Page 1 of 2

Date: 11/04/2021 County: Travis Hwy: US 183 ML Location: South of E 51st St

Time (from): 02:14 PM (to): 03:45 PM Weather: Clear

Surface type: Concrete Surface condition:  Wet or  Dry /  Smooth or  Rough

M.P.H.	AUTOMOBILES		Cumulative Total	AUTOMOBILES		Cumulative Total	TRUCKS & BUSES		M.P.H.
	Direction: Southbound			Direction:			Direction:	Direction:	
>80			125						>80
79			116						79
78			111						78
77									77
76									76
75			108						75
74			105						74
73			102						73
72			92						72
71			85						71
70			79						70
69			73						69
68			67						68
67									67
66			62						66
65			57						65
64			52						64
63			48						63
62			42						62
61			41						61
60			38						60
59			32						59
58			29						58
57			27						57
56			25						56
55			24						55
54									54
53			23						53
52									52
51			22						51
50			20						50
49									49
48									48
47			19						47
46									46
45									45
44			15						44
43			12						43
42									42
41									41
40									40
39									39
38									38
37									37
36			9						36
35			8						35
34			7						34
33			4						33
32			3						32
31			2						31
<30			1						<30
Total Automobiles			125	Total Automobiles					
			x 0.85				x 0.85		
85th Percentile Automobile:			106	85th Percentile Automobile:					
85th Percentile Speed (m.p.h.):			75	85th Percentile Speed (m.p.h.):					

Recorder: Robby Nichol



# RADAR MOTOR VEHICLE SPEED Field Tally Sheet

Date: 11/4/2021 County: Travis Hwy: US 183 ML Location: North of FM 969

Time (from): 02:14 PM (to): 03:45 PM Weather: Clear

Surface type: Concrete Surface condition:  Wet or  Dry /  Smooth or  Rough

M.P.H.	AUTOMOBILES		Cumulative Total	AUTOMOBILES		Cumulative Total	TRUCKS & BUSES		M.P.H.
	Direction: Southbound			Direction:			Direction:	Direction:	
>80			125						>80
79			113						79
78			112						78
77			107						77
76			100						76
75			95						75
74			89						74
73			85						73
72			81						72
71			76						71
70			63						70
69			62						69
68			53						68
67			46						67
66			40						66
65			38						65
64			31						64
63			24						63
62			19						62
61			18						61
60			17						60
59									59
58									58
57			14						57
56			12						56
55			11						55
54			10						54
53									53
52									52
51									51
50			9						50
49									49
48			8						48
47			7						47
46									46
45									45
44			6						44
43			5						43
42									42
41			4						41
40			3						40
39									39
38			2						38
37			1						37
36									36
35									35
34									34
33									33
32									32
31									31
<30									<30
Total Automobiles			125	Total Automobiles					
			x 0.85				x 0.85		
85th Percentile Automobile:			106	85th Percentile Automobile:					
85th Percentile Speed (m.p.h.):			77	85th Percentile Speed (m.p.h.):					

Recorder: Blake Anderson



# RADAR MOTOR VEHICLE SPEED Field Tally Sheet

Date: 11/04/2021 County: Travis Hwy: US 183 ML Location: South of FM 969

Time (from): 02:19 PM (to): 03:50 PM Weather: Clear

Surface type: Concrete Surface condition:  Wet or  Dry /  Smooth or  Rough

M.P.H.	AUTOMOBILES	Cumulative Total	AUTOMOBILES	Cumulative Total	TRUCKS & BUSES		M.P.H.
	Direction: Southbound		Direction:		Direction:	Direction:	
>80		125					>80
79		114					79
78		111					78
77		108					77
76		103					76
75		98					75
74		90					74
73		85					73
72		78					72
71		71					71
70		63					70
69		56					69
68		50					68
67		38					67
66		34					66
65		31					65
64		27					64
63		20					63
62		17					62
61		15					61
60		10					60
59							59
58							58
57		7					57
56							56
55		6					55
54							54
53							53
52							52
51		3					51
50							50
49							49
48							48
47							47
46							46
45							45
44							44
43							43
42							42
41							41
40							40
39							39
38							38
37							37
36							36
35							35
34							34
33							33
32		2					32
31							31
<30		1					<30
Total Automobiles		125	Total Automobiles				
		x 0.85			x 0.85		
85th Percentile Automobile:		106	85th Percentile Automobile:				
85th Percentile Speed (m.p.h.):		77	85th Percentile Speed (m.p.h.):				

Recorder: Robby Nichol



# RADAR MOTOR VEHICLE SPEED Field Tally Sheet

Form 1882  
(Rev. 3/19)  
Page 1 of 2

Date: 11/04/2021 County: Travis Hwy: US 183 ML Location: South of Marcel Gres Dr

Time (from): 02:20 PM (to): 03:50 PM Weather: Clear

Surface type: Concrete Surface condition:  Wet or  Dry /  Smooth or  Rough

M.P.H.	AUTOMOBILES		Cumulative Total	AUTOMOBILES		Cumulative Total	TRUCKS & BUSES		M.P.H.
	Direction: Southbound			Direction:			Direction:	Direction:	
>80			125						>80
79			104						79
78			100						78
77			95						77
76			88						76
75			83						75
74			77						74
73			71						73
72			60						72
71			59						71
70			51						70
69			46						69
68			34						68
67			30						67
66			22						66
65			16						65
64			12						64
63			8						63
62			6						62
61									61
60									60
59									59
58									58
57									57
56			4						56
55									55
54			3						54
53									53
52									52
51									51
50									50
49									49
48									48
47									47
46									46
45									45
44									44
43									43
42									42
41									41
40									40
39									39
38									38
37									37
36									36
35									35
34									34
33									33
32									32
31									31
<30									<30
Total Automobiles			125	Total Automobiles					
			x 0.85				x 0.85		
85th Percentile Automobile:			106	85th Percentile Automobile:					
85th Percentile Speed (m.p.h.):			80	85th Percentile Speed (m.p.h.):					

Recorder: Blake Anderson



# RADAR MOTOR VEHICLE SPEED Field Tally Sheet

Form 1882  
(Rev. 3/19)  
Page 1 of 2

Date: 11/04/2021 County: Travis Hwy: US 183 Location: North of Techni Center Dr

Time (from): 02:25 PM (to): 03:55 PM Weather: Clear

Surface type: Concrete Surface condition:  Wet or  Dry /  Smooth or  Rough

M.P.H.	AUTOMOBILES		Cumulative Total	AUTOMOBILES		Cumulative Total	TRUCKS & BUSES		M.P.H.
	Direction: Southbound			Direction:			Direction:	Direction:	
>80			125						>80
79			109						79
78			101						78
77			99						77
76			93						76
75			84						75
74			79						74
73			73						73
72			67						72
71			64						71
70			53						70
69			51						69
68			43						68
67			41						67
66			39						66
65			36						65
64			31						64
63			23						63
62			21						62
61			20						61
60			16						60
59			15						59
58									58
57									57
56			13						56
55									55
54			9						54
53			8						53
52			6						52
51			4						51
50			3						50
49			2						49
48									48
47									47
46									46
45									45
44									44
43									43
42									42
41									41
40									40
39									39
38									38
37			1						37
36									36
35									35
34									34
33									33
32									32
31									31
<30									<30
Total Automobiles			125	Total Automobiles					
			x 0.85				x 0.85		
85th Percentile Automobile:			106	85th Percentile Automobile:					
85th Percentile Speed (m.p.h.):			79	85th Percentile Speed (m.p.h.):					

Recorder: Robby Nichol



# RADAR MOTOR VEHICLE SPEED Field Tally Sheet

Form 1882  
(Rev. 3/19)  
Page 1 of 2

Date: 11/04/2021 County: Travis Hwy: US 183 ML Location: South of Bluestein Dr

Time (from): 02:25 PM (to): 03:55 PM Weather: Clear

Surface type: Concrete Surface condition:  Wet or  Dry /  Smooth or  Rough

M.P.H.	AUTOMOBILES		Cumulative Total	AUTOMOBILES		Cumulative Total	TRUCKS & BUSES		M.P.H.
	Direction: Southbound			Direction:			Direction:	Direction:	
>80			125						>80
79			93						79
78			88						78
77			79						77
76			68						76
75			63						75
74			60						74
73			50						73
72			48						72
71			44						71
70			38						70
69			33						69
68			29						68
67			28						67
66			25						66
65			22						65
64			17						64
63			16						63
62			14						62
61			13						61
60			11						60
59			9						59
58			8						58
57			6						57
56									56
55			5						55
54			4						54
53									53
52			3						52
51									51
50									50
49									49
48									48
47									47
46									46
45									45
44									44
43									43
42									42
41									41
40									40
39									39
38									38
37									37
36									36
35									35
34									34
33									33
32									32
31									31
<30			1						<30
Total Automobiles			125	Total Automobiles					
			x 0.85				x 0.85		
85th Percentile Automobile:			106	85th Percentile Automobile:					
85th Percentile Speed (m.p.h.):			80	85th Percentile Speed (m.p.h.):					

Recorder: Blake Anderson





# RADAR MOTOR VEHICLE SPEED Field Tally Sheet

Date: 11/04/2021 County: Travis Hwy: US 183 ML Location: North of Hudson St

Time (from): 02:31 PM (to): 04:01 PM Weather: Clear

Surface type: Concrete Surface condition:  Wet or  Dry /  Smooth or  Rough

M.P.H.	AUTOMOBILES		Cumulative Total	AUTOMOBILES		Cumulative Total	TRUCKS & BUSES		M.P.H.
	Direction: Southbound			Direction:			Direction:	Direction:	
>80			125						>80
79			117						79
78			113						78
77			109						77
76			103						76
75			98						75
74			96						74
73			95						73
72			86						72
71			77						71
70			73						70
69			65						69
68			55						68
67			43						67
66			32						66
65			28						65
64			26						64
63			23						63
62			19						62
61			17						61
60			16						60
59			15						59
58									58
57			14						57
56			12						56
55									55
54			10						54
53									53
52			7						52
51			5						51
50			4						50
49			2						49
48									48
47									47
46			1						46
45									45
44									44
43									43
42									42
41									41
40									40
39									39
38									38
37									37
36									36
35									35
34									34
33									33
32									32
31									31
<30									<30
Total Automobiles			125	Total Automobiles					
			x 0.85				x 0.85		
85th Percentile Automobile:			106	85th Percentile Automobile:					
85th Percentile Speed (m.p.h.):			77	85th Percentile Speed (m.p.h.):					

Recorder: Robby Nichol



# RADAR MOTOR VEHICLE SPEED Field Tally Sheet

Form 1882  
(Rev. 3/19)  
Page 1 of 2

Date: 11/04/2021 County: Travis Hwy: US 183 ML Location: South of Harold Ct

Time (from): 02:32 PM (to): 04:02 PM Weather: Clear

Surface type: Concrete Surface condition:  Wet or  Dry /  Smooth or  Rough

M.P.H.	AUTOMOBILES		Cumulative Total	AUTOMOBILES		Cumulative Total	TRUCKS & BUSES		M.P.H.
	Direction: Southbound			Direction:			Direction:	Direction:	
>80			125						>80
79			108						79
78			101						78
77			92						77
76			82						76
75			77						75
74			72						74
73			61						73
72			49						72
71			39						71
70			35						70
69			28						69
68			21						68
67			16						67
66			15						66
65			11						65
64			9						64
63			8						63
62			7						62
61			5						61
60			4						60
59			2						59
58									58
57									57
56			1						56
55									55
54									54
53									53
52									52
51									51
50									50
49									49
48									48
47									47
46									46
45									45
44									44
43									43
42									42
41									41
40									40
39									39
38									38
37									37
36									36
35									35
34									34
33									33
32									32
31									31
<30									<30
Total Automobiles			125	Total Automobiles					
			x 0.85				x 0.85		
85th Percentile Automobile:			106	85th Percentile Automobile:					
85th Percentile Speed (m.p.h.):			79	85th Percentile Speed (m.p.h.):					

Recorder: Blake Anderson



# RADAR MOTOR VEHICLE SPEED Field Tally Sheet

Form 1882  
(Rev. 3/19)  
Page 1 of 2

Date: 11/04/2021 County: Travis Hwy: US 183 ML Location: North of Thurgood Ave

Time (from): 02:36 PM (to): 04:06 PM Weather: Clear

Surface type: Concrete Surface condition:  Wet or  Dry /  Smooth or  Rough

M.P.H.	AUTOMOBILES		Cumulative Total	AUTOMOBILES		Cumulative Total	TRUCKS & BUSES		M.P.H.
	Direction: Southbound			Direction:			Direction:	Direction:	
>80			125						>80
79			111						79
78			106						78
77			100						77
76			96						76
75			93						75
74			87						74
73			80						73
72			76						72
71			68						71
70			57						70
69			46						69
68			31						68
67			24						67
66			21						66
65			19						65
64			16						64
63			14						63
62			13						62
61									61
60			10						60
59									59
58			9						58
57			7						57
56			6						56
55			5						55
54									54
53			3						53
52									52
51									51
50									50
49									49
48									48
47			2						47
46									46
45									45
44									44
43									43
42									42
41									41
40									40
39									39
38									38
37									37
36									36
35									35
34									34
33									33
32									32
31									31
<30									<30
Total Automobiles			125	Total Automobiles					
			x 0.85				x 0.85		
85th Percentile Automobile:			106	85th Percentile Automobile:					
85th Percentile Speed (m.p.h.):			78	85th Percentile Speed (m.p.h.):					

Recorder: Robby Nichol



# RADAR MOTOR VEHICLE SPEED Field Tally Sheet

Form 1882  
(Rev. 3/19)  
Page 1 of 2

Date: 11/04/2021 County: Travis Hwy: US 183 ML Location: North of Smith Rd

Time (from): 02:36 PM (to): 04:06 PM Weather: Clear

Surface type: Concrete Surface condition:  Wet or  Dry /  Smooth or  Rough

M.P.H.	AUTOMOBILES		Cumulative Total	AUTOMOBILES		Cumulative Total	TRUCKS & BUSES		M.P.H.
	Direction: Southbound			Direction:			Direction:	Direction:	
>80			125						>80
79			92						79
78			86						78
77			79						77
76			71						76
75			64						75
74			59						74
73			50						73
72			44						72
71			36						71
70			27						70
69			21						69
68			17						68
67			14						67
66			13						66
65			9						65
64			8						64
63			7						63
62									62
61									61
60									60
59									59
58									58
57									57
56									56
55									55
54									54
53									53
52			6						52
51			5						51
50									50
49									49
48									48
47									47
46			3						46
45									45
44			2						44
43									43
42									42
41									41
40									40
39									39
38									38
37									37
36			1						36
35									35
34									34
33									33
32									32
31									31
<30									<30
Total Automobiles			125	Total Automobiles					
			x 0.85				x 0.85		
85th Percentile Automobile:			106	85th Percentile Automobile:					
85th Percentile Speed (m.p.h.):			80	85th Percentile Speed (m.p.h.):					

Recorder: Blake Anderson



# RADAR MOTOR VEHICLE SPEED Field Tally Sheet

Date: 11/04/2021 County: Travis Hwy: US 183 ML Location: South of Eastgate Rd

Time (from): 02:41 PM (to): 04:11 PM Weather: Clear

Surface type: Concrete Surface condition:  Wet or  Dry /  Smooth or  Rough

M.P.H.	AUTOMOBILES		Cumulative Total	AUTOMOBILES		Cumulative Total	TRUCKS & BUSES		M.P.H.
	Direction: Southbound			Direction:			Direction:	Direction:	
>80			125						>80
79			110						79
78			107						78
77			102						77
76			98						76
75			86						75
74			77						74
73			71						73
72			61						72
71			54						71
70			53						70
69			50						69
68			46						68
67			41						67
66			33						66
65			31						65
64			29						64
63			25						63
62			23						62
61									61
60			21						60
59			16						59
58			15						58
57									57
56			14						56
55									55
54									54
53			13						53
52			12						52
51			10						51
50			8						50
49			7						49
48									48
47			6						47
46			5						46
45									45
44			3						44
43			2						43
42									42
41									41
40									40
39									39
38									38
37									37
36									36
35			1						35
34									34
33									33
32									32
31									31
<30									<30
Total Automobiles			125	Total Automobiles					
			x 0.85				x 0.85		
85th Percentile Automobile:			106	85th Percentile Automobile:					
85th Percentile Speed (m.p.h.):			78	85th Percentile Speed (m.p.h.):					

Recorder: Robby Nichol



# RADAR MOTOR VEHICLE SPEED Field Tally Sheet

Date: 11/04/2021 County: Travis Hwy: US 183 ML Location: North of Bolm Rd

Time (from): 02:41 PM (to): 04:11 PM Weather: Clear

Surface type: Concrete Surface condition:  Wet or  Dry /  Smooth or  Rough

M.P.H.	AUTOMOBILES		Cumulative Total	AUTOMOBILES		Cumulative Total	TRUCKS & BUSES		M.P.H.
	Direction: Southbound			Direction:			Direction:	Direction:	
>80			125						>80
79	I		109						79
78	III		108						78
77	II		105						77
76			103						76
75		II	95						75
74			93						74
73	III		87						73
72			83						72
71	III		77						71
70			73						70
69			66						69
68			60						68
67			53						67
66			43						66
65			37						65
64	III		30						64
63	III		27						63
62			24						62
61	II		19						61
60	III		17						60
59	I		14						59
58									58
57	I		13						57
56	I		12						56
55	II		11						55
54									54
53									53
52	III		9						52
51	I		6						51
50									50
49	II		5						49
48									48
47	II		3						47
46									46
45									45
44									44
43									43
42	I		1						42
41									41
40									40
39									39
38									38
37									37
36									36
35									35
34									34
33									33
32									32
31									31
<30									<30
Total Automobiles			125	Total Automobiles					
			x 0.85				x 0.85		
85th Percentile Automobile:			106	85th Percentile Automobile:					
85th Percentile Speed (m.p.h.):			78	85th Percentile Speed (m.p.h.):					

Recorder: Blake Anderson



# RADAR MOTOR VEHICLE SPEED Field Tally Sheet

Date: 11/04/2021 County: Travis Hwy: US 183 ML Location: North of Interchange Blvd

Time (from): 02:47 PM (to): 04:17 PM Weather: Clear

Surface type: Concrete Surface condition:  Wet or  Dry /  Smooth or  Rough

M.P.H.	AUTOMOBILES		Cumulative Total	AUTOMOBILES		Cumulative Total	TRUCKS & BUSES		M.P.H.
	Direction: Southbound			Direction:			Direction:	Direction:	
>80			125						>80
79			113						79
78			109						78
77			105						77
76			99						76
75			96						75
74			90						74
73			88						73
72			80						72
71			68						71
70			62						70
69			51						69
68			44						68
67			35						67
66			27						66
65			21						65
64			18						64
63			17						63
62			15						62
61			14						61
60			9						60
59									59
58									58
57									57
56									56
55									55
54									54
53									53
52									52
51									51
50									50
49			7						49
48			6						48
47			5						47
46									46
45									45
44									44
43									43
42			4						42
41									41
40			3						40
39									39
38									38
37									37
36			2						36
35									35
34									34
33			1						33
32									32
31									31
<30									<30
Total Automobiles			125	Total Automobiles					
			x 0.85				x 0.85		
85th Percentile Automobile:			106	85th Percentile Automobile:					
85th Percentile Speed (m.p.h.):			78	85th Percentile Speed (m.p.h.):					

Recorder: Robby Nichol





# RADAR MOTOR VEHICLE SPEED Field Tally Sheet

Form 1882  
(Rev. 3/19)  
Page 1 of 2

Date: 11/9/2021 County: Travis Hwy: US 183 Location: SB US 183 North of Levander Loop - ML #23

Time (from): 2:00 PM (to): 3:30 PM Weather: Clear

Surface type: Concrete Surface condition:  Wet or  Dry /  Smooth or  Rough

M.P.H.	AUTOMOBILES		Cumulative Total	AUTOMOBILES		Cumulative Total	TRUCKS & BUSES		M.P.H.
	Direction: Southbound			Direction:			Direction:	Direction:	
>80			125						>80
79			115						79
78			114						78
77			109						77
76			107						76
75			104						75
74			93						74
73			89						73
72			82						72
71			75						71
70			70						70
69			64						69
68			61						68
67			57						67
66			50						66
65			43						65
64			31						64
63			28						63
62			25						62
61									61
60									60
59			21						59
58			20						58
57			19						57
56			18						56
55			17						55
54			13						54
53									53
52			12						52
51			11						51
50									50
49			10						49
48									48
47			8						47
46									46
45			7						45
44									44
43			6						43
42									42
41			4						41
40			3						40
39									39
38									38
37									37
36									36
35									35
34									34
33			2						33
32									32
31									31
<30			1						<30
Total Automobiles			125	Total Automobiles					
			x 0.85				x 0.85		
85th Percentile Automobile:			106	85th Percentile Automobile:					
85th Percentile Speed (m.p.h.):			76	85th Percentile Speed (m.p.h.):					

Recorder: Blake Anderson



# RADAR MOTOR VEHICLE SPEED Field Tally Sheet

Date: 11/04/2021 County: Travis Hwy: US 183 ML Location: North of Levander Loop

Time (from): 02:48 PM (to): 4:18 PM Weather: Clear

Surface type: Concrete Surface condition:  Wet or  Dry /  Smooth or  Rough

M.P.H.	AUTOMOBILES		Cumulative Total	AUTOMOBILES		Cumulative Total	TRUCKS & BUSES		M.P.H.
	Direction: Southbound			Direction:			Direction:	Direction:	
>80									>80
79									79
78									78
77									77
76									76
75									75
74									74
73									73
72									72
71									71
70	I		125						70
69	I		124						69
68	III		123						68
67	III		119						67
66	III		115						66
65	III		112						65
64	IIII		109						64
63	IIIIII		104						63
62	IIII		95						62
61	IIII		89						61
60	IIII		82						60
59	IIIIII		75						59
58	IIII		64						58
57	IIII		56						57
56	IIII		46						56
55	III		36						55
54	IIII		33						54
53	II		28						53
52	IIII		26						52
51	I		20						51
50	III		19						50
49	IIII		16						49
48	III		11						48
47	I		7						47
46									46
45	I		6						45
44	I		5						44
43									43
42	II		4						42
41									41
40									40
39									39
38									38
37	I		2						37
36									36
35									35
34									34
33	I		1						33
32									32
31									31
<30									<30
Total Automobiles			125	Total Automobiles					
			x 0.85						
85th Percentile Automobile:			106	85th Percentile Automobile:					
85th Percentile Speed (m.p.h.):			64	85th Percentile Speed (m.p.h.):					

Recorder: Blake Anderson



# RADAR MOTOR VEHICLE SPEED Field Tally Sheet

Date: 11/04/2021 County: Travis Hwy: US 183 ML Location: North of Montopolis Dr

Time (from): 02:57 PM (to): 04:27 PM Weather: Clear

Surface type: Concrete Surface condition:  Wet or  Dry /  Smooth or  Rough

M.P.H.	AUTOMOBILES		Cumulative Total	AUTOMOBILES		Cumulative Total	TRUCKS & BUSES		M.P.H.
	Direction: Southbound			Direction:			Direction:	Direction:	
>80									>80
79									79
78	I		125						78
77									77
76									76
75									75
74									74
73	I		124						73
72									72
71	III		123						71
70	II		120						70
69	III		118						69
68									68
67	IIII		115						67
66	III		109						66
65	IIII		106						65
64	IIIIII		101						64
63	III		92						63
62	IIIIIIII		88						62
61	IIIIII		77						61
60	IIIIII		68						60
59	IIII		60						59
58	III		54						58
57	IIII		51						57
56	III		44						56
55	III		40						55
54	III		37						54
53	II		34						53
52	II		32						52
51	II		30						51
50	II		28						50
49	IIII		26						49
48	I		18						48
47	I		17						47
46	I		16						46
45	I		15						45
44									44
43	I		14						43
42									42
41									41
40	I		13						40
39	I		12						39
38	I		11						38
37	I		10						37
36									36
35	II		9						35
34									34
33									33
32	II		7						32
31									31
<30	IIII		5						<30
Total Automobiles			125	Total Automobiles					
			x 0.85				x 0.85		
85th Percentile Automobile:			106	85th Percentile Automobile:					
85th Percentile Speed (m.p.h.):			65	85th Percentile Speed (m.p.h.):					

Recorder: Robby Nichol



# RADAR MOTOR VEHICLE SPEED Field Tally Sheet

Form 1882  
(Rev. 3/19)  
Page 1 of 2

Date: 11/04/2021 County: Travis Hwy: US 183 ML Location: North of Saxon Ln

Time (from): 03:00 PM (to): 04:30 PM Weather: Clear

Surface type: Concrete Surface condition:  Wet or  Dry /  Smooth or  Rough

M.P.H.	AUTOMOBILES		Cumulative Total	AUTOMOBILES		Cumulative Total	TRUCKS & BUSES		M.P.H.
	Direction: Southbound			Direction:			Direction:	Direction:	
>80			125						>80
79									79
78			122						78
77			121						77
76			120						76
75			117						75
74			115						74
73			112						73
72			106						72
71			103						71
70			101						70
69			98						69
68			90						68
67			75						67
66			63						66
65			51						65
64			41						64
63			28						63
62			23						62
61			19						61
60			11						60
59			9						59
58			8						58
57			7						57
56			4						56
55									55
54			3						54
53									53
52			2						52
51									51
50									50
49									49
48									48
47									47
46									46
45									45
44									44
43									43
42									42
41									41
40									40
39									39
38									38
37									37
36									36
35									35
34									34
33									33
32									32
31									31
<30									<30
Total Automobiles			125	Total Automobiles					
			x 0.85				x 0.85		
85th Percentile Automobile:			106	85th Percentile Automobile:					
85th Percentile Speed (m.p.h.):			72	85th Percentile Speed (m.p.h.):					

Recorder: Blake Anderson



# RADAR MOTOR VEHICLE SPEED Field Tally Sheet

Date: 11/9/2021 County: Travis Hwy: US 183 Location: SB US 183 South of Vargas Road - ML #27

Time (from): 2:00 PM (to): 3:30 PM Weather: Clear

Surface type: Concrete Surface condition:  Wet or  Dry /  Smooth or  Rough

M.P.H.	AUTOMOBILES		Cumulative Total	AUTOMOBILES		Cumulative Total	TRUCKS & BUSES		M.P.H.
	Direction: Southbound			Direction:			Direction:	Direction:	
>80	I		125						>80
79	II		124						79
78	I		122						78
77	II		121						77
76	IIII		119						76
75		III	114						75
74	IIIIII		111						74
73	IIII		105						73
72	IIIIIIII		100						72
71	IIIIII		90						71
70	IIIIII		83						70
69	IIII		75						69
68	IIII		69						68
67	IIIIIIIIII		63						67
66	III		48						66
65	IIIIIIII		44						65
64	IIII		34						64
63	I		28						63
62	III		27						62
61	I		23						61
60	III		22						60
59	II		18						59
58	II		16						58
57	I		14						57
56	II		13						56
55									55
54	II		11						54
53									53
52	I		9						52
51	I		8						51
50									50
49									49
48	I		7						48
47									47
46									46
45	I		6						45
44									44
43	I		5						43
42									42
41									41
40									40
39	I		4						39
38									38
37	I		3						37
36									36
35									35
34									34
33	II		2						33
32									32
31									31
<30									<30
Total Automobiles			125	Total Automobiles					
			x 0.85				x 0.85		
85th Percentile Automobile:			106	85th Percentile Automobile:					
85th Percentile Speed (m.p.h.):			74	85th Percentile Speed (m.p.h.):					

Recorder: Robby Anderson



# RADAR MOTOR VEHICLE SPEED Field Tally Sheet

Date: 11/9/2021 County: Travis Hwy: US 183 Location: SB US 183 South of Bergstorm Storage - ML #28

Time (from): 2:05 PM (to): 3:35 PM Weather: Clear

Surface type: Concrete Surface condition:  Wet or  Dry /  Smooth or  Rough

M.P.H.	AUTOMOBILES		Cumulative Total	AUTOMOBILES		Cumulative Total	TRUCKS & BUSES		M.P.H.
	Direction: Southbound			Direction:			Direction:	Direction:	
>80			125						>80
79									79
78									78
77									77
76			123						76
75			121						75
74			120						74
73									73
72			117						72
71			115						71
70			114						70
69			109						69
68			108						68
67			101						67
66			99						66
65			89						65
64			81						64
63			69						63
62			62						62
61			56						61
60			51						60
59			49						59
58			44						58
57			41						57
56			34						56
55			31						55
54			29						54
53			27						53
52			26						52
51									51
50			23						50
49			22						49
48			21						48
47			17						47
46			16						46
45									45
44			15						44
43			11						43
42			9						42
41			8						41
40			7						40
39			5						39
38			2						38
37									37
36									36
35									35
34									34
33									33
32									32
31									31
<30									<30
Total Automobiles			125	Total Automobiles					
			x 0.85				x 0.85		
85th Percentile Automobile:			106	85th Percentile Automobile:					
85th Percentile Speed (m.p.h.):			68	85th Percentile Speed (m.p.h.):					

Recorder: Robby Nichol



# RADAR MOTOR VEHICLE SPEED Field Tally Sheet

Date: 11/9/2021 County: Travis Hwy: US 183 Location: SB US 183 South of Palm Harbor Homes - ML #29

Time (from): 2:11 PM (to): 3:41 PM Weather: Clear

Surface type: Concrete Surface condition:  Wet or  Dry /  Smooth or  Rough

M.P.H.	AUTOMOBILES		Cumulative Total	AUTOMOBILES		Cumulative Total	TRUCKS & BUSES		M.P.H.
	Direction: Southbound			Direction:			Direction:	Direction:	
>80									>80
79									79
78									78
77									77
76									76
75									75
74									74
73									73
72	I		125						72
71									71
70									70
69	I		124						69
68	I		123						68
67									67
66	I		122						66
65	II		121						65
64	II		119						64
63	III		117						63
62	III		114						62
61	II		111						61
60	IIII		109						60
59	III		102						59
58	IIII		99						58
57	IIII		94						57
56	IIII		90						56
55	IIII		85						55
54	IIIIII		80						54
53	IIII		72						53
52	IIII		66						52
51	IIIIII		62						51
50	IIII		55						50
49	IIII		50						49
48	IIIIII		45						48
47	IIII		37						47
46	IIII		32						46
45	II		26						45
44	I		24						44
43	IIII		23						43
42	IIII		16						42
41	II		12						41
40	I		10						40
39	I		9						39
38	II		8						38
37	I		6						37
36	I		5						36
35									35
34	II		4						34
33	I		2						33
32									32
31									31
<30	I		1						<30
Total Automobiles			125	Total Automobiles					
			x 0.85						
85th Percentile Automobile:			106	85th Percentile Automobile:					
85th Percentile Speed (m.p.h.):			60	85th Percentile Speed (m.p.h.):					

Recorder: Robby Nichol





# RADAR MOTOR VEHICLE SPEED Field Tally Sheet

Date: 11/9/2021 County: Travis Hwy: US 183 Location: SB US 183 South of Wells Fargo Bank - ML #30

Time (from): 2:20 PM (to): 3:50 PM Weather: Clear

Surface type: Concrete Surface condition:  Wet or  Dry /  Smooth or  Rough

M.P.H.	AUTOMOBILES		Cumulative Total	AUTOMOBILES		Cumulative Total	TRUCKS & BUSES		M.P.H.
	Direction: Southbound			Direction:			Direction:	Direction:	
>80	I		125						>80
79									79
78									78
77	I		124						77
76	II		123						76
75		II	121						75
74	II		119						74
73	IIII		117						73
72	IIII		111						72
71	II		107						71
70	IIIIII		105						70
69	IIIIIIII		97						69
68	IIIIII		86						68
67	IIIIII		78						67
66	IIIIII		69						66
65	IIIIII		60						65
64	IIIIII		53						64
63	IIII		46						63
62	IIIIII		43						62
61	IIIIII		36						61
60	IIIIII		29						60
59	IIII		23						59
58	II		18						58
57	IIII		16						57
56	IIII		12						56
55	IIII		8						55
54	I		5						54
53									53
52	I		4						52
51									51
50									50
49	I		3						49
48									48
47	I		2						47
46									46
45									45
44									44
43									43
42									42
41									41
40									40
39									39
38									38
37									37
36									36
35									35
34									34
33									33
32	I		1						32
31									31
<30									<30
Total Automobiles			125	Total Automobiles					
			x 0.85				x 0.85		
85th Percentile Automobile:			106	85th Percentile Automobile:					
85th Percentile Speed (m.p.h.):			71	85th Percentile Speed (m.p.h.):					

Recorder: Robby Nichol

## **Appendix B**

### **Northbound Radar Speed Data**



# RADAR MOTOR VEHICLE SPEED Field Tally Sheet

Date: 11/04/2021 County: Travis Hwy: US 183 ML Location: South of US 290

Time (from): 9:00 AM (to): 11:00 AM Weather: Clear

Surface type: Concrete Surface condition:  Wet or  Dry /  Smooth or  Rough

M.P.H.	AUTOMOBILES		Cumulative Total	AUTOMOBILES		Cumulative Total	TRUCKS & BUSES		M.P.H.
	Direction: Northbound			Direction:			Direction:	Direction:	
>80									>80
79			125						79
78			123						78
77			122						77
76			121						76
75			118						75
74			114						74
73			113						73
72			109						72
71			106						71
70			102						70
69			95						69
68			94						68
67			91						67
66			83						66
65			78						65
64			66						64
63			57						63
62			52						62
61			49						61
60			42						60
59			35						59
58			29						58
57			22						57
56			19						56
55			16						55
54			13						54
53			12						53
52			9						52
51			8						51
50			7						50
49			5						49
48									48
47									47
46									46
45									45
44			4						44
43									43
42			3						42
41			2						41
40			1						40
39									39
38									38
37									37
36									36
35									35
34									34
33									33
32									32
31									31
<30									<30
Total Automobiles			125	Total Automobiles					
			x 0.85						
85th Percentile Automobile:			106	85th Percentile Automobile:					
85th Percentile Speed (m.p.h.):			71	85th Percentile Speed (m.p.h.):					

Recorder: Blake Anderson



# RADAR MOTOR VEHICLE SPEED Field Tally Sheet

Form 1882  
(Rev. 3/19)  
Page 1 of 2

Date: 11/04/2021 County: Travis Hwy: US 183 ML Location: North of Manor Rd

Time (from): 09:10 AM (to): 11:10 AM Weather: Clear

Surface type: Concrete Surface condition:  Wet or  Dry /  Smooth or  Rough

M.P.H.	AUTOMOBILES		Cumulative Total	AUTOMOBILES		Cumulative Total	TRUCKS & BUSES		M.P.H.
	Direction: Northbound			Direction:			Direction:	Direction:	
>80	I		125						>80
79									79
78									78
77									77
76									76
75		II	124						75
74	I		122						74
73	II		121						73
72	IIIIIIII		119						72
71	II		111						71
70	II		109						70
69	III		107						69
68	II		103						68
67	II		101						67
66	III		99						66
65	IIIIIIII		95						65
64	IIII		86						64
63	IIIIII		81						63
62	IIII		74						62
61	IIIIII		69						61
60	IIII		62						60
59	IIII		57						59
58	IIIIII		51						58
57	IIIIII		44						57
56	III		36						56
55	II		33						55
54	I		31						54
53									53
52	IIII		30						52
51	III		25						51
50	IIII		22						50
49	III		17						49
48	III		14						48
47	I		11						47
46	I		10						46
45									45
44	I		9						44
43									43
42									42
41									41
40									40
39									39
38									38
37									37
36									36
35									35
34	I		8						34
33	I		7						33
32									32
31	III		6						31
<30	III		3						<30
Total Automobiles			125	Total Automobiles					
			x 0.85						
85th Percentile Automobile:			106	85th Percentile Automobile:					
85th Percentile Speed (m.p.h.):			69	85th Percentile Speed (m.p.h.):					

Recorder: Blake Anderson





# RADAR MOTOR VEHICLE SPEED Field Tally Sheet

Date: 11/04/2021 County: Travis Hwy: US 183 ML Location: South of Manor Rd

Time (from): 09:15 AM (to): 11:15 AM Weather: Clear

Surface type: Concrete Surface condition:  Wet or  Dry /  Smooth or  Rough

M.P.H.	AUTOMOBILES		Cumulative Total	AUTOMOBILES		Cumulative Total	TRUCKS & BUSES		M.P.H.
	Direction: Northbound			Direction:			Direction:	Direction:	
>80									>80
79									79
78									78
77			125						77
76			123						76
75			122						75
74			121						74
73			117						73
72			116						72
71			114						71
70			111						70
69									69
68			105						68
67			104						67
66			101						66
65			98						65
64			95						64
63			87						63
62			82						62
61			76						61
60			66						60
59			61						59
58			54						58
57			46						57
56			36						56
55			29						55
54			26						54
53			20						53
52			14						52
51									51
50			10						50
49			9						49
48			6						48
47									47
46			5						46
45			4						45
44			2						44
43									43
42									42
41									41
40									40
39									39
38									38
37									37
36									36
35									35
34									34
33									33
32									32
31									31
<30									<30
Total Automobiles			125	Total Automobiles					
			x 0.85				x 0.85		
85th Percentile Automobile:			106	85th Percentile Automobile:					
85th Percentile Speed (m.p.h.):			70	85th Percentile Speed (m.p.h.):					

Recorder: Blake Anderson



# RADAR MOTOR VEHICLE SPEED Field Tally Sheet

Form 1882  
(Rev. 3/19)  
Page 1 of 2

Date: 11/10/2021 County: Travis Hwy: US 183 Location: NB US 183 South of Purple Sage Drive - ML #4

Time (from): 2:50 PM (to): 4:20 PM Weather: Clear

Surface type: Concrete Surface condition:  Wet or  Dry /  Smooth or  Rough

M.P.H.	AUTOMOBILES		Cumulative Total	AUTOMOBILES		Cumulative Total	TRUCKS & BUSES		M.P.H.
	Direction: Northbound			Direction:			Direction:	Direction:	
>80			125						>80
79			117						79
78			116						78
77			113						77
76			106						76
75			104						75
74			100						74
73			95						73
72			91						72
71			86						71
70			82						70
69			73						69
68			65						68
67			60						67
66			59						66
65			56						65
64			50						64
63			43						63
62			41						62
61			34						61
60			28						60
59			24						59
58									58
57			19						57
56			18						56
55			16						55
54			15						54
53			9						53
52			7						52
51									51
50									50
49			3						49
48									48
47									47
46									46
45									45
44									44
43			1						43
42									42
41									41
40									40
39									39
38									38
37									37
36									36
35									35
34									34
33									33
32									32
31									31
<30									<30
Total Automobiles			125	Total Automobiles					
			x 0.85				x 0.85		
85th Percentile Automobile:			106	85th Percentile Automobile:					
85th Percentile Speed (m.p.h.):			76	85th Percentile Speed (m.p.h.):					

Recorder: Robby Nichol



# RADAR MOTOR VEHICLE SPEED Field Tally Sheet

Date: 11/10/2021 County: Travis Hwy: US 183 Location: NB US 183 North of Loyola Lane - ML #5

Time (from): 2:40 PM (to): 4:10 PM Weather: Clear

Surface type: Concrete Surface condition:  Wet or  Dry /  Smooth or  Rough

M.P.H.	AUTOMOBILES		Cumulative Total	AUTOMOBILES		Cumulative Total	TRUCKS & BUSES		M.P.H.
	Direction: Northbound			Direction:			Direction:	Direction:	
>80			125						>80
79			110						79
78			104						78
77			100						77
76			96						76
75			89						75
74			84						74
73			73						73
72			67						72
71			60						71
70			50						70
69			46						69
68			40						68
67			36						67
66			34						66
65			29						65
64			24						64
63			20						63
62			18						62
61			16						61
60			14						60
59			12						59
58			10						58
57			8						57
56			6						56
55									55
54			4						54
53			3						53
52			2						52
51									51
50									50
49									49
48									48
47									47
46									46
45									45
44									44
43									43
42									42
41									41
40									40
39									39
38									38
37									37
36									36
35									35
34									34
33									33
32									32
31									31
<30									<30
Total Automobiles			125	Total Automobiles					
			x 0.85				x 0.85		
85th Percentile Automobile:			106	85th Percentile Automobile:					
85th Percentile Speed (m.p.h.):			79	85th Percentile Speed (m.p.h.):					

Recorder: Robby Nichol



# RADAR MOTOR VEHICLE SPEED Field Tally Sheet

Date: 11/10/2021 County: Travis Hwy: US 183 Location: US183 North of Loyola Lane - ML 6

Time (from): 2:30 PM (to): 4:00 PM Weather: Clear

Surface type: Concrete Surface condition:  Wet or  Dry /  Smooth or  Rough

M.P.H.	AUTOMOBILES		Cumulative Total	AUTOMOBILES		Cumulative Total	TRUCKS & BUSES		M.P.H.
	Direction: Northbound			Direction:			Direction:	Direction:	
>80									>80
79									79
78			125						78
77			123						77
76			118						76
75			115						75
74			112						74
73			109						73
72			106						72
71			102						71
70			96						70
69			89						69
68			81						68
67			74						67
66			62						66
65			57						65
64			41						64
63			38						63
62			34						62
61			27						61
60			24						60
59			19						59
58			16						58
57			13						57
56			10						56
55			9						55
54			5						54
53									53
52			4						52
51			2						51
50									50
49									49
48									48
47									47
46									46
45									45
44									44
43									43
42									42
41									41
40									40
39									39
38									38
37									37
36									36
35									35
34									34
33			1						33
32									32
31									31
<30			125						<30
Total Automobiles				Total Automobiles					
			x 0.85				x 0.85		
85th Percentile Automobile:			106	85th Percentile Automobile:					
85th Percentile Speed (m.p.h.):			72	85th Percentile Speed (m.p.h.):					

Recorder: Robby Nichol



# RADAR MOTOR VEHICLE SPEED Field Tally Sheet

Date: 11/10/2021 County: Travis Hwy: US 183 Location: NB US 183 South of Loyala Lane - ML #7

Time (from): 2:20 PM (to): 3:50 PM Weather: Clear

Surface type: Concrete Surface condition:  Wet or  Dry /  Smooth or  Rough

M.P.H.	AUTOMOBILES		Cumulative Total	AUTOMOBILES		Cumulative Total	TRUCKS & BUSES		M.P.H.
	Direction: Northbound			Direction:			Direction:	Direction:	
>80									>80
79									79
78			125						78
77									77
76			123						76
75			121						75
74			119						74
73			118						73
72			116						72
71			114						71
70			111						70
69			108						69
68			105						68
67			102						67
66			97						66
65			91						65
64			83						64
63			76						63
62			71						62
61			64						61
60			55						60
59			48						59
58			41						58
57			32						57
56			28						56
55			21						55
54			17						54
53									53
52			12						52
51			9						51
50			8						50
49			6						49
48									48
47			3						47
46									46
45									45
44									44
43									43
42									42
41									41
40									40
39									39
38			2						38
37									37
36									36
35									35
34									34
33									33
32									32
31									31
<30									<30
Total Automobiles			125	Total Automobiles					
			x 0.85				x 0.85		
85th Percentile Automobile:			106	85th Percentile Automobile:					
85th Percentile Speed (m.p.h.):			69	85th Percentile Speed (m.p.h.):					

Recorder: Robby Nichol





# RADAR MOTOR VEHICLE SPEED Field Tally Sheet

Date: 11/10/2021 County: Travis Hwy: US 183 Location: NB US 183 North of Little Walnut Creek - ML #8

Time (from): 2:10 PM (to): 3:40 PM Weather: Clear

Surface type: Concrete Surface condition:  Wet or  Dry /  Smooth or  Rough

M.P.H.	AUTOMOBILES		Cumulative Total	AUTOMOBILES		Cumulative Total	TRUCKS & BUSES		M.P.H.
	Direction: Northbound			Direction:			Direction:	Direction:	
>80									>80
79			125						79
78			123						78
77			121						77
76			120						76
75			119						75
74			118						74
73			111						73
72			105						72
71			98						71
70			89						70
69			84						69
68			77						68
67			73						67
66			64						66
65			59						65
64			48						64
63			41						63
62			35						62
61			31						61
60			28						60
59			22						59
58			18						58
57			16						57
56			13						56
55									55
54			9						54
53			6						53
52			5						52
51			4						51
50									50
49									49
48									48
47									47
46									46
45									45
44									44
43									43
42									42
41			2						41
40			1						40
39									39
38									38
37									37
36									36
35									35
34									34
33									33
32									32
31									31
<30									<30
Total Automobiles			125	Total Automobiles					
			x 0.85				x 0.85		
85th Percentile Automobile:			106	85th Percentile Automobile:					
85th Percentile Speed (m.p.h.):			73	85th Percentile Speed (m.p.h.):					

Recorder: Robby Nichol



# RADAR MOTOR VEHICLE SPEED Field Tally Sheet

Date: 11/10/2021 County: Travis Hwy: US 183 Location: NB US 183 North of FM 969 - ML #9

Time (from): 2:00 PM (to): 3:30 PM Weather: Clear

Surface type: Concrete Surface condition:  Wet or  Dry /  Smooth or  Rough

M.P.H.	AUTOMOBILES		Cumulative Total	AUTOMOBILES		Cumulative Total	TRUCKS & BUSES		M.P.H.
	Direction: Northbound			Direction:			Direction:	Direction:	
>80			125						>80
79			97						79
78			93						78
77			89						77
76			85						76
75			81						75
74			79						74
73			69						73
72			66						72
71			60						71
70			50						70
69			45						69
68			41						68
67			34						67
66			26						66
65			22						65
64			18						64
63			14						63
62			13						62
61			12						61
60			11						60
59									59
58									58
57									57
56									56
55									55
54									54
53			10						53
52									52
51									51
50			9						50
49			8						49
48			6						48
47									47
46			5						46
45			4						45
44									44
43									43
42									42
41			3						41
40									40
39									39
38									38
37									37
36									36
35									35
34									34
33									33
32									32
31									31
<30			1						<30
Total Automobiles			125	Total Automobiles					
			x 0.85				x 0.85		
85th Percentile Automobile:			106	85th Percentile Automobile:					
85th Percentile Speed (m.p.h.):			80	85th Percentile Speed (m.p.h.):					

Recorder: Robby Nichol



# RADAR MOTOR VEHICLE SPEED Field Tally Sheet

Form 1882  
(Rev. 3/19)  
Page 1 of 2

Date: 11/10/2021 County: Travis Hwy: US 183 Location: NB US 183 North of FM 969 - ML #10

Time (from): 2:35 PM (to): 4:05 PM Weather: Clear

Surface type: Concrete Surface condition:  Wet or  Dry /  Smooth or  Rough

M.P.H.	AUTOMOBILES		Cumulative Total	AUTOMOBILES		Cumulative Total	TRUCKS & BUSES		M.P.H.
	Direction: Northbound			Direction:			Direction:	Direction:	
>80			125						>80
79			109						79
78			105						78
77			101						77
76			99						76
75			98						75
74			93						74
73			85						73
72			74						72
71			61						71
70			56						70
69			48						69
68			42						68
67			34						67
66			28						66
65			25						65
64			18						64
63			15						63
62			11						62
61									61
60			7						60
59			5						59
58			3						58
57			2						57
56									56
55									55
54									54
53									53
52									52
51									51
50									50
49			1						49
48									48
47									47
46									46
45									45
44									44
43									43
42									42
41									41
40									40
39									39
38									38
37									37
36									36
35									35
34									34
33									33
32									32
31									31
<30									<30
Total Automobiles			125	Total Automobiles					
			x 0.85				x 0.85		
85th Percentile Automobile:			106	85th Percentile Automobile:					
85th Percentile Speed (m.p.h.):			79	85th Percentile Speed (m.p.h.):					

Recorder: Danny Cooley



# RADAR MOTOR VEHICLE SPEED Field Tally Sheet

Form 1882  
(Rev. 3/19)  
Page 1 of 2

Date: 11/10/2021 County: Travis Hwy: US 183 Location: NB US 183 North of FM 969 - ML #11

Time (from): 2:39 PM (to): 4:09 PM Weather: Clear

Surface type: Concrete Surface condition:  Wet or  Dry /  Smooth or  Rough

M.P.H.	AUTOMOBILES		Cumulative Total	AUTOMOBILES		Cumulative Total	TRUCKS & BUSES		M.P.H.
	Direction: Northbound			Direction:			Direction:	Direction:	
>80			125						>80
79			114						79
78			111						78
77			106						77
76			101						76
75			97						75
74			94						74
73			87						73
72			82						72
71			74						71
70			73						70
69			62						69
68			56						68
67			46						67
66			42						66
65			35						65
64			31						64
63			28						63
62			26						62
61			20						61
60			19						60
59			17						59
58			15						58
57									57
56			14						56
55			13						55
54									54
53									53
52			11						52
51			8						51
50			7						50
49			5						49
48			2						48
47									47
46									46
45									45
44									44
43									43
42									42
41									41
40									40
39									39
38									38
37									37
36									36
35									35
34									34
33									33
32									32
31									31
<30			1						<30
Total Automobiles			125	Total Automobiles					
			x 0.85				x 0.85		
85th Percentile Automobile:			106	85th Percentile Automobile:					
85th Percentile Speed (m.p.h.):			77	85th Percentile Speed (m.p.h.):					

Recorder: John Abernethy



# RADAR MOTOR VEHICLE SPEED Field Tally Sheet

Date: 11/10/2021 County: Travis Hwy: US 183 Location: NB US 183 South of FM 969 - ML #12

Time (from): 2:28 PM (to): 3:58 PM Weather: Clear

Surface type: Concrete Surface condition:  Wet or  Dry /  Smooth or  Rough

M.P.H.	AUTOMOBILES		Cumulative Total	AUTOMOBILES		Cumulative Total	TRUCKS & BUSES		M.P.H.
	Direction: Northbound			Direction:			Direction:	Direction:	
>80									>80
79									79
78									78
77									77
76									76
75	I		125						75
74	III		124						74
73	II		121						73
72	IIII		119						72
71	IIIIII		114						71
70	IIIIII		106						70
69	II		100						69
68	III		98						68
67	III		94						67
66	IIIIII		91						66
65	IIIIII		84						65
64	IIIIII		79						64
63	IIII		72						63
62	IIIIII		67						62
61	III		59						61
60	I		55						60
59	III		54						59
58	III		51						58
57	III		48						57
56	IIII		45						56
55	I		39						55
54	II		38						54
53	I		36						53
52	III		35						52
51									51
50	IIIIII		31						50
49	II		24						49
48	II		22						48
47	IIIIII		20						47
46	III		13						46
45	II		10						45
44	II		8						44
43									43
42	I		6						42
41									41
40									40
39	I		5						39
38									38
37									37
36									36
35									35
34									34
33									33
32									32
31									31
<30	III		4						<30
Total Automobiles			125	Total Automobiles					
			x 0.85				x 0.85		
85th Percentile Automobile:			106	85th Percentile Automobile:					
85th Percentile Speed (m.p.h.):			70	85th Percentile Speed (m.p.h.):					

Recorder: Danny Cooley





# RADAR MOTOR VEHICLE SPEED Field Tally Sheet

Date: 11/10/2021 County: Travis Hwy: US 183 Location: NB US 183 South of Tracor Lane - ML #13

Time (from): 2:31 pm (to): 4:01 pm Weather: Clear

Surface type: Concrete Surface condition:  Wet or  Dry /  Smooth or  Rough

M.P.H.	AUTOMOBILES		Cumulative Total	AUTOMOBILES		Cumulative Total	TRUCKS & BUSES		M.P.H.
	Direction: Northbound			Direction:			Direction:	Direction:	
>80			125						>80
79									79
78									78
77									77
76			123						76
75									75
74			120						74
73									73
72			118						72
71			116						71
70			114						70
69			109						69
68			103						68
67			95						67
66			86						66
65			81						65
64			73						64
63			68						63
62			67						62
61			63						61
60			57						60
59			56						59
58			52						58
57			51						57
56			46						56
55			43						55
54			36						54
53			35						53
52			34						52
51			33						51
50			32						50
49			28						49
48			24						48
47			17						47
46			16						46
45			15						45
44			11						44
43			8						43
42			7						42
41			6						41
40			5						40
39									39
38									38
37									37
36									36
35									35
34									34
33			4						33
32									32
31			3						31
<30			2						<30
Total Automobiles			125	Total Automobiles					
			x 0.85				x 0.85		
85th Percentile Automobile:			106	85th Percentile Automobile:					
85th Percentile Speed (m.p.h.):			69	85th Percentile Speed (m.p.h.):					

Recorder: John Abernethy



# RADAR MOTOR VEHICLE SPEED Field Tally Sheet

Date: 11/10/2021 County: Travis Hwy: US 183 Location: NB US 183 ML North of Techni Center Drive - ML #14

Time (from): 2:21 pm (to): 3:51 pm Weather: Clear

Surface type: Concrete Surface condition:  Wet or  Dry /  Smooth or  Rough

M.P.H.	AUTOMOBILES		Cumulative Total	AUTOMOBILES		Cumulative Total	TRUCKS & BUSES		M.P.H.
	Direction: Northbound			Direction:			Direction:	Direction:	
>80									>80
79									79
78	I		125						78
77									77
76									76
75		I	124						75
74	I								74
73	I		123						73
72	IIII		122						72
71	II		118						71
70	IIIIII		116						70
69	II		110						69
68	IIIIII		108						68
67	III		102						67
66	IIII		98						66
65	IIIIII		93						65
64	IIIIII		87						64
63	III		80						63
62	IIIIII		77						62
61	III		71						61
60	IIIIIIII		68						60
59	II		59						59
58	I		57						58
57	IIIIII		56						57
56	III		50						56
55	III		47						55
54	II		44						54
53	IIII		42						53
52	I		38						52
51	II		37						51
50	I		35						50
49	III		34						49
48	IIII		31						48
47	IIII		27						47
46	II		23						46
45	IIII		21						45
44	III		17						44
43	I		14						43
42	II		13						42
41	I		11						41
40									40
39	III		10						39
38	I		7						38
37	I		6						37
36	I		5						36
35									35
34	I		4						34
33									33
32									32
31									31
<30	III		3						<30
Total Automobiles			125	Total Automobiles					
			x 0.85						
85th Percentile Automobile:			106	85th Percentile Automobile:					
85th Percentile Speed (m.p.h.):			68	85th Percentile Speed (m.p.h.):					

Recorder: Dan Cooley



# RADAR MOTOR VEHICLE SPEED Field Tally Sheet

Date: 11/10/2021 County: Travis Hwy: US 183 Location: NB US 183 South of Central Avenue - ML #15

Time (from): 2:24 pm (to): 3:54 pm Weather: Clear

Surface type: Concrete Surface condition:  Wet or  Dry /  Smooth or  Rough

M.P.H.	AUTOMOBILES		Cumulative Total	AUTOMOBILES		Cumulative Total	TRUCKS & BUSES		M.P.H.
	Direction: Northbound			Direction:			Direction:	Direction:	
>80	I		125						>80
79									79
78									78
77									77
76									76
75	I		124						75
74									74
73	I		123						73
72	III		122						72
71	I		119						71
70	IIII		118						70
69	IIII		113						69
68	IIIIII		108						68
67	IIIIIIII		99						67
66	III		87						66
65	III		83						65
64	III		80						64
63	III		77						63
62	III		73						62
61	III		70						61
60	IIII		66						60
59	III		59						59
58	III		56						58
57	IIII		53						57
56	IIIIII		48						56
55	III		39						55
54	III		35						54
53	II		31						53
52	II		29						52
51	IIII		27						51
50	II		22						50
49	III		20						49
48	II		17						48
47	III		15						47
46	II		12						46
45	II		10						45
44									44
43	III		8						43
42	I		4						42
41	I		3						41
40	I		2						40
39									39
38	I		1						38
37									37
36									36
35									35
34									34
33									33
32									32
31									31
<30									<30
Total Automobiles			125	Total Automobiles					
			x 0.85				x 0.85		
85th Percentile Automobile:			106	85th Percentile Automobile:					
85th Percentile Speed (m.p.h.):			68	85th Percentile Speed (m.p.h.):					

Recorder: John Abernethy



# RADAR MOTOR VEHICLE SPEED Field Tally Sheet

Date: 11/10/2021 County: Travis Hwy: US 183 Location: NB US 183 North of Hudson Street - ML #16

Time (from): 2:14 pm (to): 3:44 pm Weather: Clear

Surface type: Concrete Surface condition:  Wet or  Dry /  Smooth or  Rough

M.P.H.	AUTOMOBILES		Cumulative Total	AUTOMOBILES		Cumulative Total	TRUCKS & BUSES		M.P.H.
	Direction: Northbound			Direction:			Direction:	Direction:	
>80									>80
79									79
78			125						78
77			123						77
76									76
75									75
74			122						74
73									73
72			119						72
71			115						71
70			109						70
69									69
68			108						68
67			103						67
66			100						66
65			94						65
64			91						64
63			82						63
62			78						62
61			70						61
60			67						60
59			63						59
58			58						58
57			56						57
56			53						56
55			51						55
54			50						54
53			44						53
52			40						52
51			37						51
50			30						50
49			28						49
48			23						48
47			19						47
46			18						46
45			16						45
44			13						44
43									43
42			10						42
41									41
40			9						40
39			7						39
38			6						38
37			2						37
36									36
35									35
34									34
33									33
32									32
31									31
<30			1						<30
Total Automobiles			125	Total Automobiles					
			x 0.85				x 0.85		
85th Percentile Automobile:			106	85th Percentile Automobile:					
85th Percentile Speed (m.p.h.):			68	85th Percentile Speed (m.p.h.):					

Recorder: Dan Cooley



# RADAR MOTOR VEHICLE SPEED Field Tally Sheet

Date: 11/10/2021 County: Travis Hwy: US 183 Location: NB US 183 North of Walnut Creek Trail - ML #17

Time (from): 2:17 pm (to): 3:47 pm Weather: Clear

Surface type: Concrete Surface condition:  Wet or  Dry /  Smooth or  Rough

M.P.H.	AUTOMOBILES		Cumulative Total	AUTOMOBILES		Cumulative Total	TRUCKS & BUSES		M.P.H.
	Direction: Northbound			Direction:			Direction:	Direction:	
>80									>80
79									79
78	I		125						78
77	I		124						77
76									76
75		II	123						75
74	I		121						74
73	III		120						73
72	IIII		117						72
71	III		112						71
70	IIII		109						70
69	IIII		105						69
68	I		100						68
67	IIIIII		99						67
66	IIIIII		92						66
65	IIIIIIII		84						65
64	IIIIIIIIII		74						64
63	IIIIIIII		62						63
62	IIIIII		52						62
61	IIIIII		46						61
60	IIIIII		40						60
59	IIII		34						59
58	IIII		30						58
57	IIII		25						57
56	I		20						56
55	II		19						55
54	IIII		17						54
53	III		12						53
52	II		9						52
51	III		7						51
50									50
49									49
48									48
47	I		4						47
46	I		3						46
45									45
44									44
43									43
42									42
41									41
40									40
39									39
38									38
37									37
36									36
35									35
34									34
33									33
32									32
31									31
<30	II		2						<30
Total Automobiles			125	Total Automobiles					
			x 0.85				x 0.85		
85th Percentile Automobile:			106	85th Percentile Automobile:					
85th Percentile Speed (m.p.h.):			70	85th Percentile Speed (m.p.h.):					

Recorder: John Abernethy





# RADAR MOTOR VEHICLE SPEED Field Tally Sheet

Date: 11/10/2021 County: Travis Hwy: US 183 Location: NB US 183 South of Walnut Creek Trail - ML #18

Time (from): 2:07 pm (to): 3:37 pm Weather: Clear

Surface type: Concrete Surface condition:  Wet or  Dry /  Smooth or  Rough

M.P.H.	AUTOMOBILES		Cumulative Total	AUTOMOBILES		Cumulative Total	TRUCKS & BUSES		M.P.H.
	Direction: Northbound			Direction:			Direction:	Direction:	
>80									>80
79									79
78	I		125						78
77	I		124						77
76									76
75		III	123						75
74	IIII		120						74
73	III		116						73
72	III		113						72
71	II		110						71
70	II		108						70
69	III		106						69
68	IIII		103						68
67	III		97						67
66	IIIIIIII		94						66
65	IIII		83						65
64	IIIIIIII		79						64
63	IIII		68						63
62	III		63						62
61	III		59						61
60	IIIIII		55						60
59	III		46						59
58	III		43						58
57	II		40						57
56	III		38						56
55	IIII		35						55
54	III		30						54
53	I		27						53
52	IIII		26						52
51	III		20						51
50									50
49	II		16						49
48									48
47	III		14						47
46	II		11						46
45	III		9						45
44	I		6						44
43	II		5						43
42	I		3						42
41									41
40									40
39									39
38									38
37									37
36									36
35									35
34									34
33									33
32									32
31									31
<30	II		2						<30
Total Automobiles			125	Total Automobiles					
			x 0.85				x 0.85		
85th Percentile Automobile:			106	85th Percentile Automobile:					
85th Percentile Speed (m.p.h.):			69	85th Percentile Speed (m.p.h.):					

Recorder: Dan Cooley



# RADAR MOTOR VEHICLE SPEED Field Tally Sheet

Date: 11/10/2021 County: Travis Hwy: US 183 Location: US 183 South of Allyton Drive - ML #19

Time (from): 2:08 pm (to): 3:38 pm Weather: Clear

Surface type: Concrete Surface condition:  Wet or  Dry /  Smooth or  Rough

M.P.H.	AUTOMOBILES		Cumulative Total	AUTOMOBILES		Cumulative Total	TRUCKS & BUSES		M.P.H.
	Direction: Northbound			Direction:			Direction:	Direction:	
>80									>80
79									79
78									78
77	I		125						77
76	I		124						76
75	I	I	123						75
74	I		122						74
73	II		121						73
72	III		119						72
71	III		116						71
70	III		113						70
69	IIII		110						69
68	III		104						68
67	IIIIII		101						67
66	IIII		93						66
65	IIII		88						65
64	IIIIIIII		84						64
63	III		73						63
62	IIIIII		70						62
61	II		62						61
60	IIII		60						60
59	IIII		56						59
58	III		50						58
57	IIII		47						57
56	IIII		41						56
55	IIII		36						55
54	II		32						54
53	III		30						53
52	I		27						52
51	IIII		26						51
50	III		22						50
49	III		19						49
48	III		16						48
47	II		13						47
46	IIII		11						46
45	III		7						45
44									44
43	I		4						43
42									42
41									41
40									40
39									39
38	I		3						38
37	I		2						37
36									36
35									35
34									34
33									33
32									32
31									31
<30	I		1						<30
Total Automobiles			125	Total Automobiles					
			x 0.85				x 0.85		
85th Percentile Automobile:			106	85th Percentile Automobile:					
85th Percentile Speed (m.p.h.):			69	85th Percentile Speed (m.p.h.):					

Recorder: John Abernethy



# RADAR MOTOR VEHICLE SPEED Field Tally Sheet

Date: 11/10/2021 County: Travis Hwy: US 183 Location: NB US 183 South of Smith Road

Time (from): 2:00 pm (to): 3:30 pm Weather: Clear

Surface type: Concrete Surface condition:  Wet or  Dry /  Smooth or  Rough

M.P.H.	AUTOMOBILES		Cumulative Total	AUTOMOBILES		Cumulative Total	TRUCKS & BUSES		M.P.H.
	Direction: Northbound			Direction:			Direction:	Direction:	
>80			125						>80
79			108						79
78			107						78
77			103						77
76			96						76
75			91						75
74			84						74
73			78						73
72			72						72
71			60						71
70			54						70
69			43						69
68			36						68
67			29						67
66			23						66
65			19						65
64			18						64
63			14						63
62			12						62
61			10						61
60			7						60
59									59
58									58
57									57
56									56
55									55
54									54
53			6						53
52									52
51			5						51
50									50
49									49
48									48
47									47
46			4						46
45			2						45
44									44
43									43
42									42
41									41
40									40
39									39
38									38
37									37
36									36
35									35
34									34
33									33
32									32
31									31
<30									<30
Total Automobiles			125	Total Automobiles					
			x 0.85				x 0.85		
85th Percentile Automobile:			106	85th Percentile Automobile:					
85th Percentile Speed (m.p.h.):			78	85th Percentile Speed (m.p.h.):					

Recorder: Dan Cooley



# RADAR MOTOR VEHICLE SPEED Field Tally Sheet

Date: 11/10/2021 County: Travis Hwy: US 183 Location: NB US 183 ML #21

Time (from): 2:00 pm (to): 3:30 pm Weather: Clear

Surface type: Concrete Surface condition:  Wet or  Dry /  Smooth or  Rough

M.P.H.	AUTOMOBILES		Cumulative Total	AUTOMOBILES		Cumulative Total	TRUCKS & BUSES		M.P.H.
	Direction: Northbound			Direction:			Direction:	Direction:	
>80			125						>80
79	I		112						79
78	II		111						78
77			109						77
76	III		102						76
75			99						75
74	II		92						74
73			90						73
72			81						72
71			75						71
70			67						70
69			57						69
68			49						68
67			39						67
66	III		31						66
65	III		27						65
64	III		24						64
63	III		21						63
62	III		17						62
61	II		13						61
60	II		11						60
59	III		9						59
58	II		6						58
57	I		4						57
56	I		3						56
55									55
54									54
53									53
52									52
51									51
50	I		2						50
49	I		1						49
48									48
47									47
46									46
45									45
44									44
43									43
42									42
41									41
40									40
39									39
38									38
37									37
36									36
35									35
34									34
33									33
32									32
31									31
<30									<30
Total Automobiles			125	Total Automobiles					
			x 0.85				x 0.85		
85th Percentile Automobile:			106	85th Percentile Automobile:					
85th Percentile Speed (m.p.h.):			77	85th Percentile Speed (m.p.h.):					

Recorder: John Abernethy



# RADAR MOTOR VEHICLE SPEED Field Tally Sheet

Date: 11/9/2021 County: Travis Hwy: US 183 Location: Northbound US 183 south of N Howard Road

Time (from): 3:00 pm (to): 4:30 pm Weather: Clear

Surface type: Concrete Surface condition:  Wet or  Dry /  Smooth or  Rough

M.P.H.	AUTOMOBILES		Cumulative Total	AUTOMOBILES		Cumulative Total	TRUCKS & BUSES		M.P.H.
	Direction: Northbound			Direction:			Direction:	Direction:	
>80									>80
79									79
78									78
77									77
76									76
75									75
74									74
73									73
72			125						72
71			122						71
70			121						70
69			119						69
68			114						68
67			109						67
66			104						66
65			97						65
64			91						64
63			88						63
62			79						62
61			76						61
60			71						60
59			69						59
58			65						58
57			62						57
56			55						56
55			50						55
54			46						54
53			39						53
52			36						52
51			33						51
50			31						50
49			22						49
48			15						48
47			11						47
46			10						46
45									45
44			7						44
43			5						43
42									42
41			3						41
40									40
39									39
38			2						38
37									37
36			1						36
35									35
34									34
33									33
32									32
31									31
<30									<30
Total Automobiles			125	Total Automobiles					
			x 0.85				x 0.85		
85th Percentile Automobile:			106	85th Percentile Automobile:					
85th Percentile Speed (m.p.h.):			67	85th Percentile Speed (m.p.h.):					

Recorder: Robby Nichol



# RADAR MOTOR VEHICLE SPEED Field Tally Sheet

Form 1882  
(Rev. 3/19)  
Page 1 of 2

Date: 11/9/21 County: Travis Hwy: US 183 Location: Northbound US 183 north of Howard Road

Time (from): 3:00 pm (to): 4:30 pm Weather: Clear

Surface type: Concrete Surface condition:  Wet or  Dry /  Smooth or  Rough

M.P.H.	AUTOMOBILES		Cumulative Total	AUTOMOBILES		Cumulative Total	TRUCKS & BUSES		M.P.H.
	Direction: NB			Direction:			Direction:	Direction:	
>80									>80
79	I		125						79
78	II		124						78
77	III		122						77
76	III		188						76
75	I		114						75
74	IIII		113						74
73	IIII		107						73
72	IIIIII		101						72
71	IIII		93						71
70	III		88						70
69	IIIIIIII		85						69
68	IIII		74						68
67	IIII		69						67
66	IIIIII		63						66
65	IIII		55						65
64	IIII		50						64
63	II		44						63
62	II		42						62
61	III		40						61
60	III		36						60
59	IIII		32						59
58	I		27						58
57	I		26						57
56	I		25						56
55									55
54									54
53	I		24						53
52									52
51	I		23						51
50	II		22						50
49	I		20						49
48	II		19						48
47	II		17						47
46									46
45									45
44	II		15						44
43									43
42	II		13						42
41	I		11						41
40	II		10						40
39	I		8						39
38	I		7						38
37	III		6						37
36	I		3						36
35									35
34									34
33									33
32									32
31	I		2						31
<30	I		1						<30
Total Automobiles			125	Total Automobiles					
			x 0.85				x 0.85		
85th Percentile Automobile:			106	85th Percentile Automobile:					
85th Percentile Speed (m.p.h.):			73	85th Percentile Speed (m.p.h.):					

Recorder: Blake Anderson





# RADAR MOTOR VEHICLE SPEED Field Tally Sheet

Date: 11/9/21 County: Travis Hwy: US 183 Location: Northbound US 183 south of Howard Road - ML #24

Time (from): 2:54 pm (to): 4:24 pm Weather: Clear

Surface type: Concrete Surface condition:  Wet or  Dry /  Smooth or  Rough

M.P.H.	AUTOMOBILES		Cumulative Total	AUTOMOBILES		Cumulative Total	TRUCKS & BUSES		M.P.H.
	Direction: NB			Direction:			Direction:	Direction:	
>80									>80
79									79
78									78
77	I		125						77
76									76
75		II	124						75
74	II		122						74
73	IIIIII		120						73
72	IIII		113						72
71	IIIIIIII		110						71
70	IIIIII		98						70
69	IIIII		92						69
68	IIIIII		87						68
67	IIIIII		79						67
66	IIIIII		71						66
65	IIIIII		62						65
64	IIIIII		53						64
63	IIIIII		45						63
62	IIII		36						62
61	IIII		32						61
60	IIIIII		29						60
59	IIII		23						59
58	IIII		20						58
57	IIII		16						57
56	IIII		11						56
55	IIII		8						55
54	I		4						54
53									53
52	II		3						52
51									51
50									50
49									49
48	I		1						48
47									47
46									46
45									45
44									44
43									43
42									42
41									41
40									40
39									39
38									38
37									37
36									36
35									35
34									34
33									33
32									32
31									31
<30									<30
Total Automobiles			125	Total Automobiles					
			x 0.85				x 0.85		
85th Percentile Automobile:			106	85th Percentile Automobile:					
85th Percentile Speed (m.p.h.):			71	85th Percentile Speed (m.p.h.):					

Recorder: Blake Anderson



# RADAR MOTOR VEHICLE SPEED Field Tally Sheet

Form 1882  
(Rev. 3/19)  
Page 1 of 2

Date: 11/9/21 County: Travis Hwy: US 183 Location: Northbound US 183 north of Montopolis Drive - ML #25

Time (from): 2:49 pm (to): 4:19 pm Weather: Clear

Surface type: Concrete Surface condition:  Wet or  Dry /  Smooth or  Rough

M.P.H.	AUTOMOBILES		Cumulative Total	AUTOMOBILES		Cumulative Total	TRUCKS & BUSES		M.P.H.
	Direction: Northbound			Direction:			Direction:	Direction:	
>80			125						>80
79			121						79
78			120						78
77			116						77
76			112						76
75			107						75
74			103						74
73			96						73
72			83						72
71			78						71
70			68						70
69			62						69
68			58						68
67			50						67
66			48						66
65			44						65
64			36						64
63			30						63
62			27						62
61			22						61
60			18						60
59			14						59
58			13						58
57			9						57
56			5						56
55			4						55
54									54
53									53
52									52
51			2						51
50			1						50
49									49
48									48
47									47
46									46
45									45
44									44
43									43
42									42
41									41
40									40
39									39
38									38
37									37
36									36
35									35
34									34
33									33
32									32
31									31
<30									<30
Total Automobiles			125	Total Automobiles					
			x 0.85				x 0.85		
85th Percentile Automobile:			106	85th Percentile Automobile:					
85th Percentile Speed (m.p.h.):			75	85th Percentile Speed (m.p.h.):					

Recorder: Blake Anderson



# RADAR MOTOR VEHICLE SPEED Field Tally Sheet

Date: 11/9/21 County: Travis Hwy: US 183 Location: Northbound US 183 south of Montopolis Drive - ML#26

Time (from): 2:41 pm (to): 4:11 pm Weather: Clear

Surface type: Concrete Surface condition:  Wet or  Dry /  Smooth or  Rough

M.P.H.	AUTOMOBILES		Cumulative Total	AUTOMOBILES		Cumulative Total	TRUCKS & BUSES		M.P.H.
	Direction: NB			Direction:			Direction:	Direction:	
>80									>80
79									79
78									78
77									77
76									76
75									75
74									74
73			125						73
72			123						72
71			120						71
70			118						70
69			114						69
68			109						68
67			102						67
66			96						66
65			89						65
64			81						64
63			75						63
62			73						62
61			64						61
60			59						60
59			55						59
58			53						58
57			45						57
56			40						56
55			38						55
54			36						54
53			35						53
52			31						52
51			28						51
50			23						50
49									49
48			20						48
47			17						47
46			16						46
45			12						45
44			10						44
43									43
42									42
41			9						41
40			8						40
39									39
38									38
37									37
36									36
35									35
34									34
33									33
32									32
31									31
<30			7						<30
Total Automobiles			125	Total Automobiles					
			x 0.85						
85th Percentile Automobile:			106	85th Percentile Automobile:					
85th Percentile Speed (m.p.h.):			68	85th Percentile Speed (m.p.h.):					

Recorder: Blake Anderson



# RADAR MOTOR VEHICLE SPEED Field Tally Sheet

Date: 11/9/21 County: Travis Hwy: US 183 Location: Northbound US 183 south of Thompson Lane - ML #27

Time (from): 2:36 pm (to): 4:06 pm Weather: Clear

Surface type: Concrete Surface condition:  Wet or  Dry /  Smooth or  Rough

M.P.H.	AUTOMOBILES		Cumulative Total	AUTOMOBILES		Cumulative Total	TRUCKS & BUSES		M.P.H.
	Direction: Northbound			Direction:			Direction:	Direction:	
>80	III		125						>80
79									79
78									78
77									77
76	II		122						76
75		III	120						75
74	IIII		117						74
73	IIII		112						73
72	IIII		108						72
71	IIII		103						71
70	III		97						70
69	IIII		94						69
68	IIII		90						68
67	IIII		85						67
66	IIII		80						66
65	III		75						65
64	IIIIIIII		72						64
63	IIII		63						63
62	IIIIII		58						62
61	IIII		50						61
60	IIII		44						60
59	III		39						59
58									58
57	III		36						57
56	II		33						56
55	III		31						55
54	II		28						54
53									53
52									52
51	I		26						51
50									50
49									49
48	I		25						48
47	III		24						47
46	I		21						46
45	I		20						45
44	I		19						44
43	III		18						43
42	I		15						42
41	III		14						41
40	I		11						40
39	III		10						39
38	I		7						38
37	I		6						37
36	IIII		5						36
35									35
34									34
33									33
32									32
31									31
<30									<30
Total Automobiles			125	Total Automobiles					
			x 0.85				x 0.85		
85th Percentile Automobile:			106	85th Percentile Automobile:					
85th Percentile Speed (m.p.h.):			72	85th Percentile Speed (m.p.h.):					

Recorder: Blake Anderson



# RADAR MOTOR VEHICLE SPEED Field Tally Sheet

Date: 11/9/21 County: Travis Hwy: US 183 Location: Northbound US 183 south of Thompson Lane - ML #28

Time (from): 2:33 pm (to): 4:03 pm Weather: Clear

Surface type: Concrete Surface condition:  Wet or  Dry /  Smooth or  Rough

M.P.H.	AUTOMOBILES		Cumulative Total	AUTOMOBILES		Cumulative Total	TRUCKS & BUSES		M.P.H.
	Direction: Northbound			Direction:			Direction:	Direction:	
>80	II		125						>80
79									79
78	I		123						78
77	IIII		122						77
76	I		118						76
75		III	117						75
74	IIII		114						74
73	II		110						73
72	II		108						72
71	IIII		106						71
70	IIIIII		102						70
69	IIIIII		96						69
68	IIII		89						68
67	IIIIII		85						67
66	III		79						66
65	III		76						65
64	III		73						64
63	II		70						63
62	II		68						62
61	IIII		66						61
60	IIIIII		62						60
59	II		56						59
58	II		54						58
57	IIII		52						57
56	III		48						56
55	IIII		45						55
54	IIIIII		40						54
53	IIII		34						53
52	III		30						52
51	I		27						51
50	I		26						50
49	IIII		25						49
48	III		21						48
47	II		18						47
46									46
45	I		16						45
44									44
43	I		15						43
42	I		14						42
41									41
40	IIII		13						40
39	III		9						39
38	I		6						38
37	I		5						37
36									36
35	I		4						35
34	I		3						34
33									33
32	II		2						32
31									31
<30									<30
Total Automobiles			125	Total Automobiles					
			x 0.85				x 0.85		
85th Percentile Automobile:			106	85th Percentile Automobile:					
85th Percentile Speed (m.p.h.):			71	85th Percentile Speed (m.p.h.):					

Recorder: Blake Anderson



# RADAR MOTOR VEHICLE SPEED Field Tally Sheet

Date: 11/9/2021 County: Travis Hwy: US 183 Location: NB US 183 North of Patton Avenue - ML #29

Time (from): 2:26 PM (to): 3:56 PM Weather: Clear

Surface type: Concrete Surface condition:  Wet or  Dry /  Smooth or  Rough

M.P.H.	AUTOMOBILES		Cumulative Total	AUTOMOBILES		Cumulative Total	TRUCKS & BUSES		M.P.H.
	Direction: Northbound			Direction:			Direction:	Direction:	
>80									>80
79									79
78									78
77									77
76									76
75									75
74			125						74
73									73
72			124						72
71			120						71
70			118						70
69			114						69
68			106						68
67			99						67
66			94						66
65			86						65
64			79						64
63			68						63
62			59						62
61			49						61
60			37						60
59			31						59
58			30						58
57			26						57
56			20						56
55			15						55
54			14						54
53			11						53
52			7						52
51									51
50			6						50
49			3						49
48									48
47			2						47
46									46
45									45
44									44
43									43
42									42
41									41
40									40
39									39
38									38
37									37
36									36
35									35
34									34
33									33
32									32
31									31
<30									<30
Total Automobiles			125	Total Automobiles					
			x 0.85				x 0.85		
85th Percentile Automobile:			106	85th Percentile Automobile:					
85th Percentile Speed (m.p.h.):			68	85th Percentile Speed (m.p.h.):					

Recorder: Blake Anderson





# RADAR MOTOR VEHICLE SPEED Field Tally Sheet

Date: 11/9/21 County: Travis Hwy: US 183 Location: NB US 183 North of Southside Wrecker

Time (from): 2:20 PM (to): 3:50 PM Weather: Clear

Surface type: Concrete Surface condition:  Wet or  Dry /  Smooth or  Rough

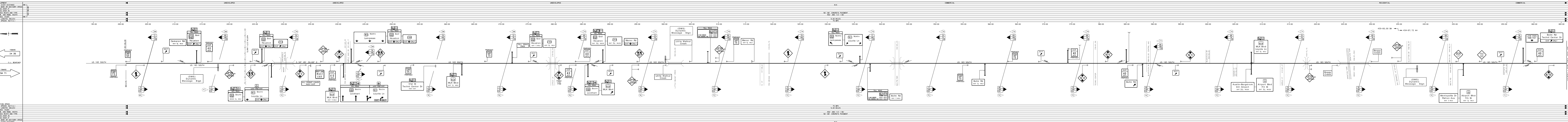
M.P.H.	AUTOMOBILES		Cumulative Total	AUTOMOBILES		Cumulative Total	TRUCKS & BUSES		M.P.H.
	Direction: Northbound			Direction:			Direction:	Direction:	
>80									>80
79			125						79
78			124						78
77			123						77
76			122						76
75			118						75
74			115						74
73			110						73
72			101						72
71			93						71
70			88						70
69			81						69
68			73						68
67			64						67
66			58						66
65			52						65
64			46						64
63			43						63
62			37						62
61			28						61
60			20						60
59			15						59
58			10						58
57			6						57
56			4						56
55									55
54									54
53									53
52									52
51									51
50									50
49									49
48									48
47			1						47
46									46
45									45
44									44
43									43
42									42
41									41
40									40
39									39
38									38
37									37
36									36
35									35
34									34
33									33
32									32
31									31
<30									<30
Total Automobiles			125	Total Automobiles					
			x 0.85				x 0.85		
85th Percentile Automobile:			106	85th Percentile Automobile:					
85th Percentile Speed (m.p.h.):			73	85th Percentile Speed (m.p.h.):					

Recorder: Blake Anderson

## **Appendix C**

### **Strip Map**

US 183 SOUTH



**EXISTING SPEED**  
 ZONE SPEEDS (M.P.H.):  
 75 MPH  
 5.02 MILES  
 450' AND 112' - 136'

**DEVELOPMENT**  
 RES. SIGHT DISTANCE  
 BALL BANK OR ADVISORY SPEED  
 CURVES OVER 2%  
 GRADES OVER 3%  
 SURFACE WIDTH AND TYPE  
 R.O.W. AND ROBB. WIDTH  
 CRASHES (YEAR)  
 ZONE LENGTHS (MILES)  
 ZONE SPEEDS (M.P.H.):

**DISTRICT:** AUSTIN COUNTY: TRAVIS MINUTE NO. 1  
**HIGHWAY:** 183 CITY: AUSTIN REPLACES: 0151-09-036 DATE: 11/13/2023  
 DATE OF STUDY: 09-2023 CANCELLED BY: 0151-09-036 DATE: 11/13/2023

**LIMITS OF ZONE**

SECTION	ONE	TWO	THREE						
BEGINS	STA. OR M.P.	CONT. AND SECT.	PROJECT	STA. OR M.P.	CONT. AND SECT.	PROJECT	STA. OR M.P.	CONT. AND SECT.	PROJECT
BEGINS	201+00.00	0151-09-036	( )	BEGINS	MP	( )	BEGINS	( )	( )
ENDS	265+00.00	0151-09-036	( )	ENDS	MP	( )	ENDS	( )	( )

**LEGEND**

**SPEED ZONE**  
 CONT. 0151 SEC. 09

INDICATES TRIAL RUN SURVEY (MPH)  
 (DATE: 01/13/2023)

- 42 | 85 PERCENTILE SPEED
- 62 | TOP SPEED MEASURED
- 125 | NUMBER OF CARS CHECKED

- FATAL ACCIDENT
- PERSONAL INJURY ACCIDENT
- PROPERTY DAMAGE ACCIDENT

- INDICATES SECTION ZONED BY COMPLETION DATE
- SIGNALIZED INTERSECTION
- TRIAL RUN

**DYNAMIC MESSAGE SIGN**

**BRIDGE LOCATIONS**

- OVERHEAD SIGN BRIDGE
- PEDESTRIAN BRIDGE

**EXISTING SIGN - SINGLE POST**

**EXISTING SIGN - DUAL POST**

**PROPOSED SIGN - SINGLE POST**

**PROPOSED SIGN - DUAL POST**

**ATKINS**  
 CIVIL ENGINEERS & ARCHITECTS, L.L.P.

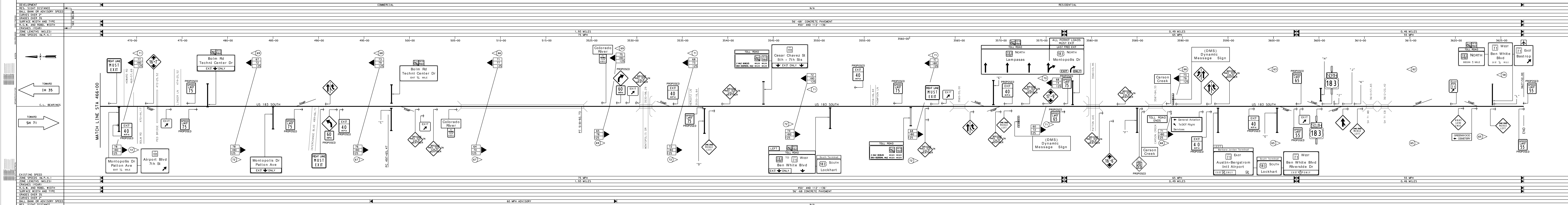
**SPEED STUDY**  
 TRAVIS COUNTY  
 US 183 SOUTH

**LEGEND**

**A**

**B**

# US 183 SOUTH



DISTRICT: AUSTIN COUNTY: TRAVIS		MINUTE NO.:	DATE: / /
HIGHWAY: 1835 CITY: AUSTIN		REPLACES:	DATE: / /
DATE OF STUDY: **-**-**		REPLACED BY:	DATE: / /
		CANCELLED BY:	DATE: / /

LIMITS OF ZONE			
SECTION ONE	LENGTH	SECTION TWO	LENGTH
STA. OR M.P.	MILES	STA. OR M.P.	MILES
BEGINS 466+00.00	0.151-09-036	BEGINS 3627+52.00	0.151-09-036
ENDS 466+00.00		ENDS 3627+52.00	

### LEGEND

- 42 85 PERCENTILE SPEED
- 62 TOP SPEED MEASURED
- 125 NUMBER OF CARS CHECKED
- FATAL ACCIDENT
- PERSONAL INJURY ACCIDENT
- PROPERTY DAMAGE ACCIDENT
- INDICATES SECTION ZONED BY COMMISSION MINUTE
- SIGNALIZED INTERSECTION
- TRIAL RUN
- DYNAMIC MESSAGE SIGN
- BRIDGE LOCATIONS
- OVERHEAD SIGN BRIDGE
- PEDESTRIAN BRIDGE
- EXISTING SIGN - SINGLE POST
- EXISTING SIGN - DUAL POST
- PROPOSED SIGN - SINGLE POST
- PROPOSED SIGN - DUAL POST

### SPEED ZONE

CONT. 0151 SEC. 09

INDICATES TRIAL RUN SURVEY (MPH)

(DATE: 01/13/2022)

SHEET 2 OF 2

ATKINS

SPEED STUDY TRAVIS COUNTY US 183 SOUTH

DATE: 01/13/2022

PROJECT NO. 2

DATE: 01/13/2022