



CENTRAL TEXAS REGIONAL
MOBILITY AUTHORITY
INNOVATION BRIEF

MoveFWD Job Training Program

FAST FACTS

- 01.** Within the first five months, 57 students graduated from the CDL course.
- 02.** 25 students are registered for the next CDL course offering demonstrating its continued demand.
- 03.** The program proactively recruits employers to attend classes and interview students for jobs while the students are in the process of being trained to ensure they have immediate job opportunities.
- 04.** Each CDL course attracts several female students which has not been the norm for this industry.
- 05.** There is tremendous demand for heavy equipment operators, and the construction industry is actively supporting efforts to implement new training programs such as those offered by the MoveFWD program and its partners.

The Innovation Team was created in Fall 2018 to support the Mobility Authority's focus on innovation from its strategic plan. These innovation briefs give high-level updates about what the Mobility Authority is up to.

Want to know more?
Visit MobilityAuthority.com.

What Are We Doing?

With the ever-increasing influx of new residents to Central Texas, more consumer pressure is being placed on our existing and saturated transportation system and network. This is leading to greater demand for new and expanded roadways. However, skilled labor to work on roadway projects is not keeping up with demand. Recognizing this problem, the Central Texas Regional Mobility Authority (Mobility Authority) stepped up and developed a job training program called MoveFWD to train potential job candidates for industry employment in transportation-related fields. The program's outreach targets the unemployed, underserved and economically challenged populations. Thus, the program offers comprehensive services provided by collaborating partners comprised of local social service agencies and educational institutions.

MOVEFWD

What is the goal of our efforts?

The Mobility Authority seeks to improve transportation-related skilled labor by increasing the qualified and trained job candidate pool for contractors constructing mobility projects and providing related services.

A Flyer for MoveFWD

Interested in roadway construction, job training and career support?

MOVEFWD Workforce Collaborative of Central Texas
We'll Help You!

Learn About Our Training:

- Classes tailored to current and future jobs
- Entry-level and upskilling opportunities
- Construction readiness
- Heavy equipment operation

Get Help Applying for Construction Jobs

Finding a job can be difficult. Career managers from local organizations are ready to help you update your resume, learn interview skills, and apply for current job postings.

With Our Partners

ACC, Central Texas Regional Mobility Authority, and other local organizations.

What is the goal of our efforts?

Finding a job can be difficult. Career managers from local organizations are ready to help you update your resume, learn interview skills, and apply for current job postings.

Get Community Support from Local Organizations

Connect with resources offered through local organizations and learn about our new construction career collaborative. Career Managers can assist you with a wide range of social services, direct you to training, and help you find and keep a job. Meet with a Career Manager and be ready for upcoming project hiring opportunities.

Questions?

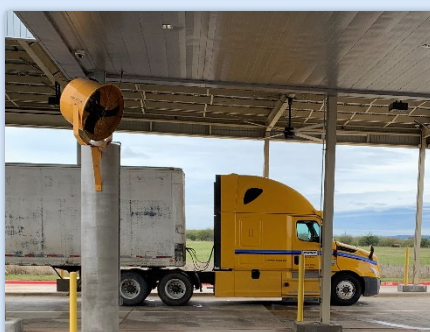
Visit MoveFWDCTX.com or contact our Workforce Development Liaison at (512) 450-4316 or MoveFWDCTX@ctmra.org.


With MoveFWD, the Central Texas Regional Mobility Authority offers construction training in partnership with Austin Community College.

What Have We Done So Far?

The MoveFWD program, in partnership with Austin Community College (ACC), conducted successful training of customer service representatives for call centers. Several of the course graduates were offered positions in the Mobility Authority's third-party-operated call center while others were hired by other customer service employers. Currently, the program, in collaboration with ACC, offers commercial drivers license (CDL) truck driving training to help meet the demand for CDL drivers. The instruction includes classroom and on-the-road training during the five-week course. One of the initial challenges was locating a training site with enough space for truck maneuvering and overnight storage. Program staff were able to secure a location, and the program now offers training in two locations within the region. The course receives high marks from the students, and many of them have exceeded expectations by receiving multiple job offers upon course completion.

MoveFWD Job Training Program



MOVEFWD 

LET'S MOVE FORWARD CENTRAL TEXAS!

Surrounded by fast-growing industries looking for qualified customer service representatives, MoveFWD, A Workforce Collaborative of Central Texas, is prepared to assist you with Customer Service, Employment, Training and Career Support.


Our Training Program Includes

- Employment simulation and immersion
- Preparation for customers and customer-facing situations
- Familiarity with current information, technology and software programs
- Interpersonal skills and data entry skills development

Additional Training Support and Services

- Scholarship opportunities available
- Work with a designated Career Manager to explore diverse career possibilities
- Guidance and assistance with housing, food, clothing and transportation
- Learn to craft compelling resumes and cover letters
- Job application and interview support
- Time and money management training

With Our Partners



Upon program completion, participants will receive a Customer Service Representative Certificate classifying them as a qualified candidate in the Customer Service Industry. Earning this certificate will help set you apart from the competition and support your pursuit of an exciting and long-term career.

For more information, visit [MoveFWDCTX.com](https://movefwdctx.com), or contact our Workforce Development Liaison at (512) 450-6316 or MoveFWDCTX@ctrma.org

Top, Upper Left: Scenes showing MoveFWD CDL trainees as they receive driving instruction behind the wheel. **Right:** A flyer for MoveFWD's Customer Service/Call Center Training.

JEFF DAILEY
Deputy Executive Director
jdailey@ctrma.org

MIA ZMUD
mzmud@ctrma.org

STEVE PUSTELNYK
spustelnyk@ctrma.org



CENTRAL TEXAS REGIONAL
MOBILITY AUTHORITY

3300 N IH-35, Suite 300
Austin, TX 78705
[MobilityAuthority.com](https://www.MobilityAuthority.com)

How Are We Moving Forward?

Student demand for the CDL course – along with employer and industry demand - remains very strong. A new heavy equipment operations training course is scheduled to begin summer 2020 and is already receiving attention from local industry. This course will first focus on classroom instruction of job site layout and development, plan reading and Occupational Safety and Health Administration (OSHA) 10 principles, followed by in-seat instruction on the operation of back hoers/front loaders and skid steers. More training on other equipment is planned to be added to meet the growing needs of industry contractors.