



**CENTRAL TEXAS
Regional Mobility Authority**

AGENDA ITEM #5 SUMMARY

Authorize procurement of a construction contract for the Manor Expressway maintenance facility.

Strategic Plan Relevance: Regional Mobility

Department: Engineering

Associated Costs: Preliminary Engineer's Estimate (Construction Only)
\$543,115

Funding Source: Construction Fund

Board Action Required: Yes

Description of Matter: Staff requests Board approval to advertise, release bid documents, and receive bids, consistent with the Mobility Authority Procurement Policy, to construct the Manor Expressway maintenance facility and associated site improvements.

Additional Board approvals will be requested at a later date related to the award and contract execution for the Maintenance Facility and associated site improvements.

Reference documentation: Draft Resolution
Proposed Maintenance Facility Improvement/Site
Plan

Contact for further information: Wesley M. Burford, P.E., Director of Engineering

**GENERAL MEETING OF THE BOARD OF DIRECTORS
OF THE
CENTRAL TEXAS REGIONAL MOBILITY AUTHORITY**

RESOLUTION NO. 13-___

**AUTHORIZING PROCUREMENT OF A CONSTRUCTION CONTRACT
FOR THE MANOR EXPRESSWAY MAINTENANCE FACILITY.**

WHEREAS, the Mobility Authority acquired a site of approximately 10 acres south of the Manor Expressway that is suitable for use as a maintenance facility; and

WHEREAS, the Mobility Authority needs to procure a construction contract to develop the site for its use as a maintenance facility; and

WHEREAS, the Executive Director recommends that the Mobility Authority procure a contract to construct the site improvements needed to use the site as the Manor Expressway Maintenance Facility.

NOW THEREFORE, BE IT RESOLVED, that the Executive Director authorizes the Executive Director and staff to prepare and issue the procurement documents necessary to solicit bids to from firms interested in constructing the site improvements needed for the Manor Expressway Maintenance Facility, in accordance with the procurement policies established by Chapter 4 of the Mobility Authority Policy Code; and

BE IT FURTHER RESOLVED, that the bids be evaluated and that a recommendation be made to the Board to award a contract to the lowest responsive bid for the construction contract.

Adopted by the Board of Directors of the Central Texas Regional Mobility Authority on the 20th day of November, 2013.

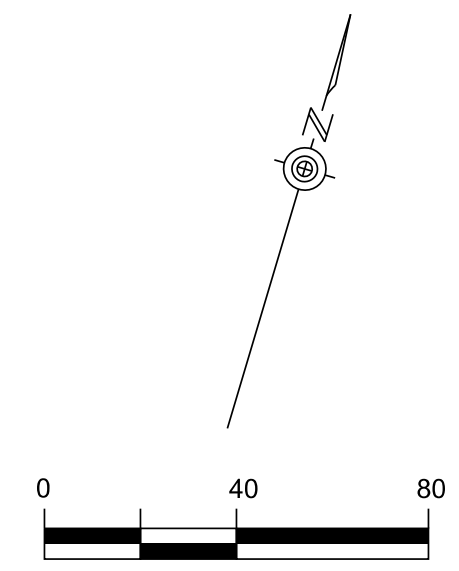
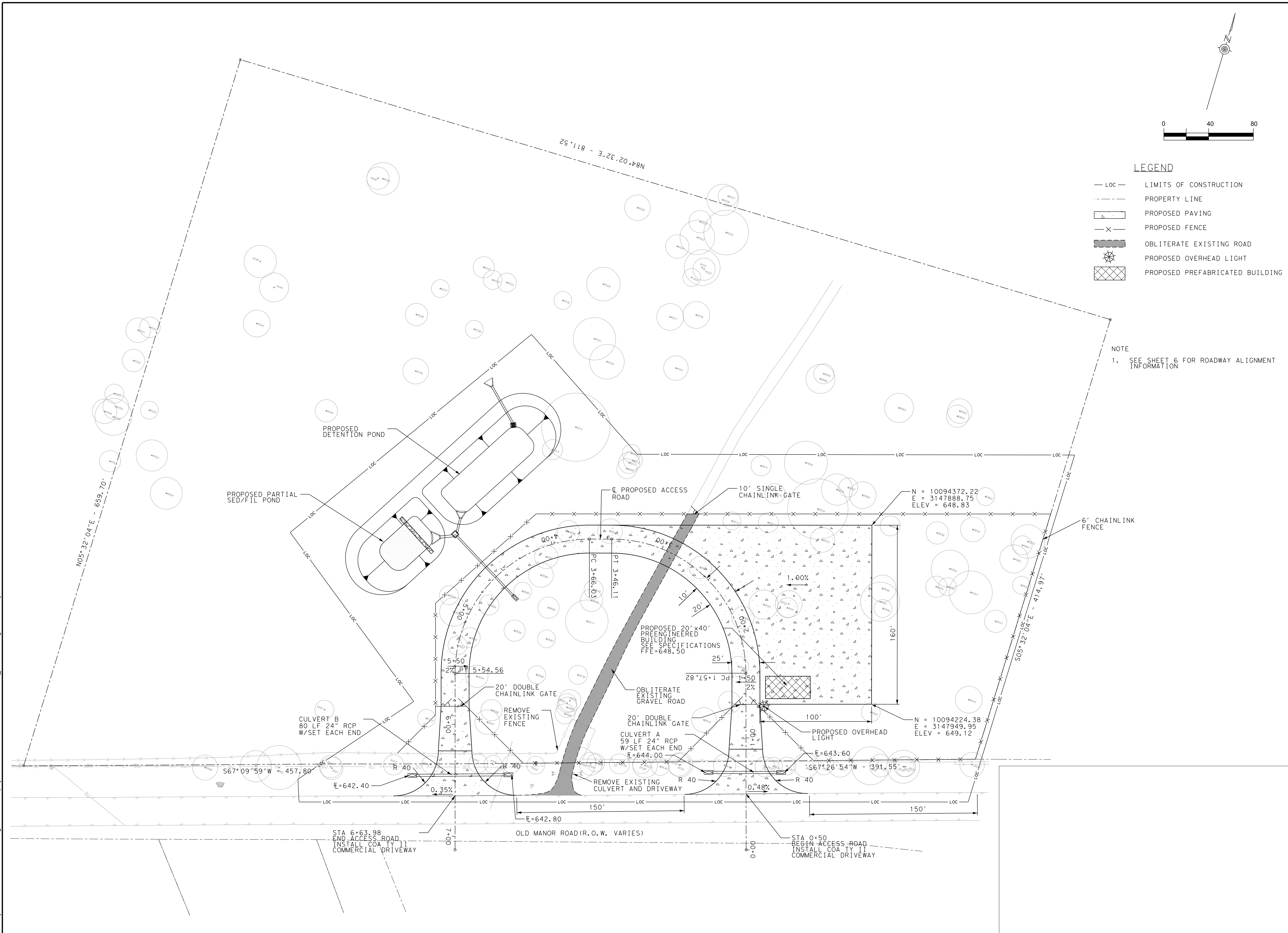
Submitted and reviewed by:

Approved:

Andrew Martin
General Counsel for the Central
Texas Regional Mobility Authority

Ray A. Wilkerson
Chairman, Board of Directors
Resolution Number 13-___
Date Passed 11/20/13

X:\Projects\0207 - 290E CDA Oversight - Manor Exp\W\Maintenance Yard\DGN\Sheets\0207_SITEPLAN.dgn modified by rbell on 8/6/2013 - 6:32:50 PM



- LEGEND**
- Loc — LIMITS OF CONSTRUCTION
 - - - - - PROPERTY LINE
 - ▭ PROPOSED PAVING
 - x - PROPOSED FENCE
 - ▨ OBLITERATE EXISTING ROAD
 - ☼ PROPOSED OVERHEAD LIGHT
 - ▩ PROPOSED PREFABRICATED BUILDING

NOTE
1. SEE SHEET 6 FOR ROADWAY ALIGNMENT INFORMATION

REV. NO.	BY	DATE	REVISION DESCRIPTION



K FRIESE & ASSOCIATES, INC.
 1120 S. CAPITAL OF TEXAS HWY, II-100, AUSTIN, TX 78746
CENTRAL TEXAS REGIONAL MOBILITY AUTHORITY
 290E MAINTENANCE YARD
CIVIL SITE PLAN

K FRIESE + ASSOCIATES
 PUBLIC PROJECT ENGINEERING
 1120 S. CAPITAL OF TEXAS HWY
 CITYVIEW 2, SUITE 100
 AUSTIN, TEXAS 78746
 (FIRM # 6535)



SCALE	1" = 40' (FULL SIZE)
DATE	8/6/2013
SHEET NUMBER	3 OF 19