



CENTRAL TEXAS
Regional Mobility Authority

Welcome and opening remarks by the Chairman and the Board of Directors

Agenda Item #1

January 27, 2016



CENTRAL TEXAS
Regional Mobility Authority

Opportunity for Public Comment

Agenda Item #2

January 27, 2016



CENTRAL TEXAS
Regional Mobility Authority

Regular Items

Regular Agenda Items #3-6

January 27, 2016



CENTRAL TEXAS
Regional Mobility Authority

Approve the minutes for the December 16, 2015, Regular Board Meeting

Agenda Item #3

Geoff Petrov, General Counsel

January 27, 2016



CENTRAL TEXAS
Regional Mobility Authority

Accept the financial statements for December 2015

Agenda Item #4

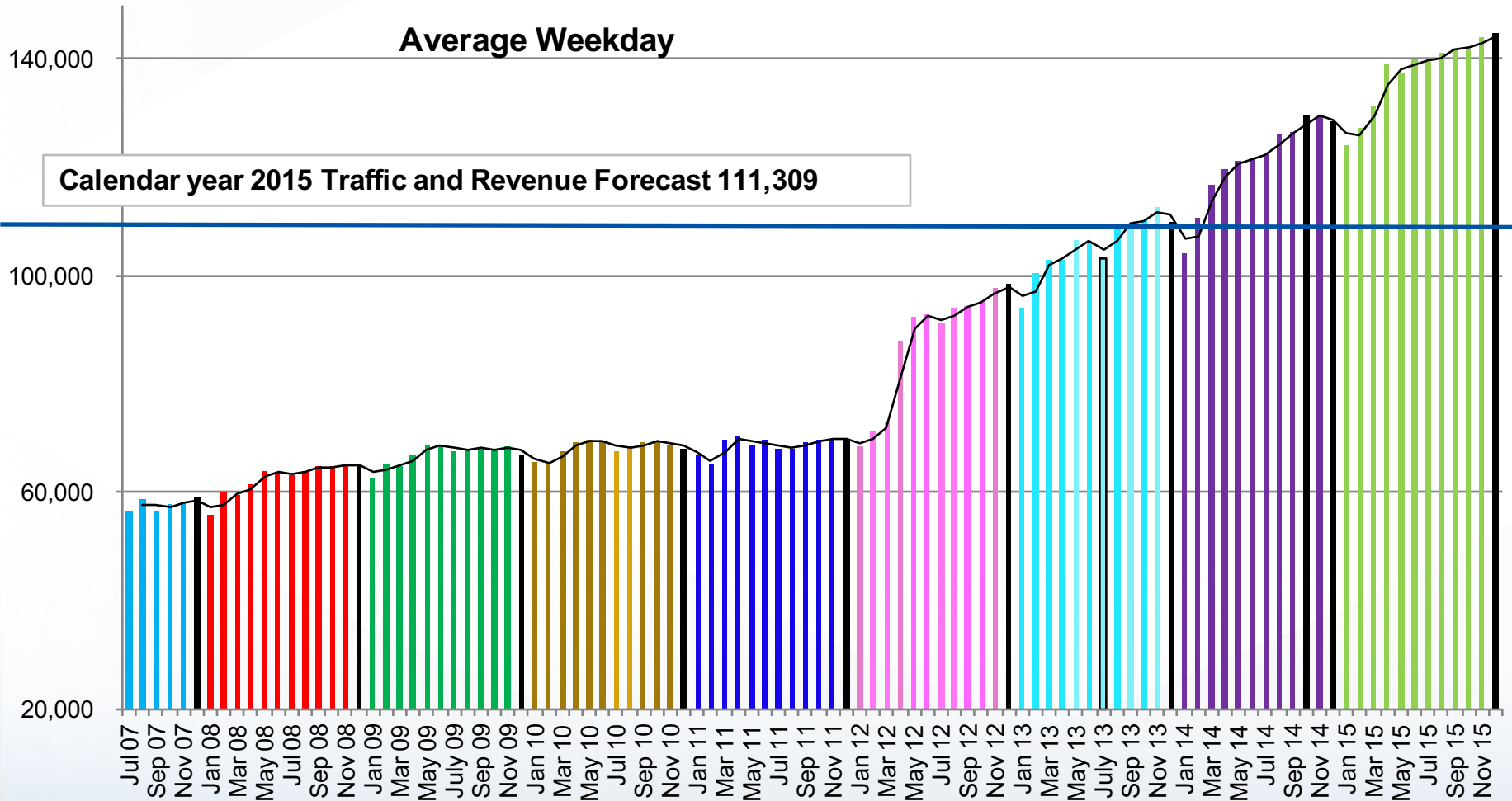
Bill Chapman, Chief Financial Officer
Mary Temple, Controller

January 27, 2016

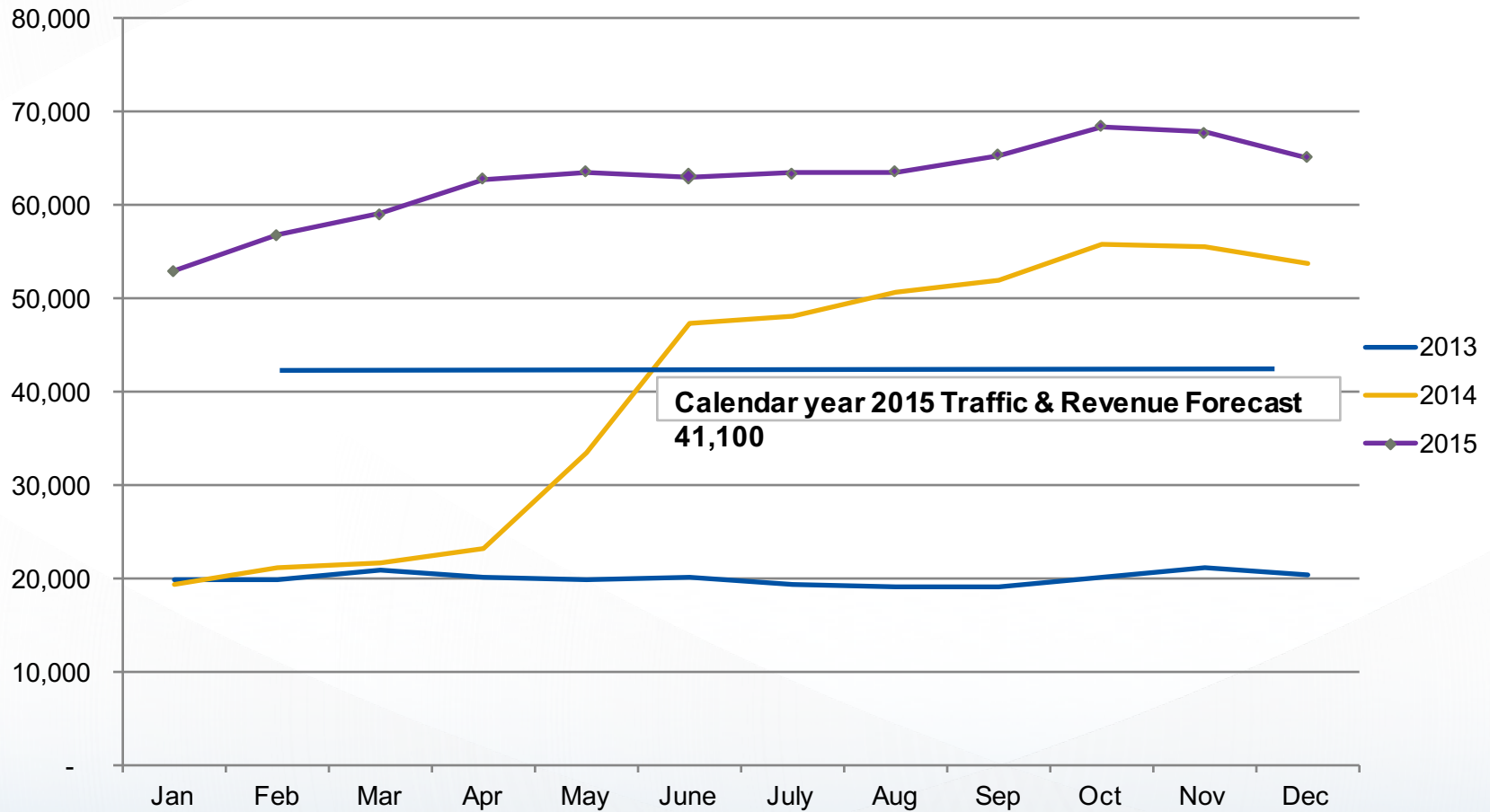


CENTRAL TEXAS
Regional Mobility Authority

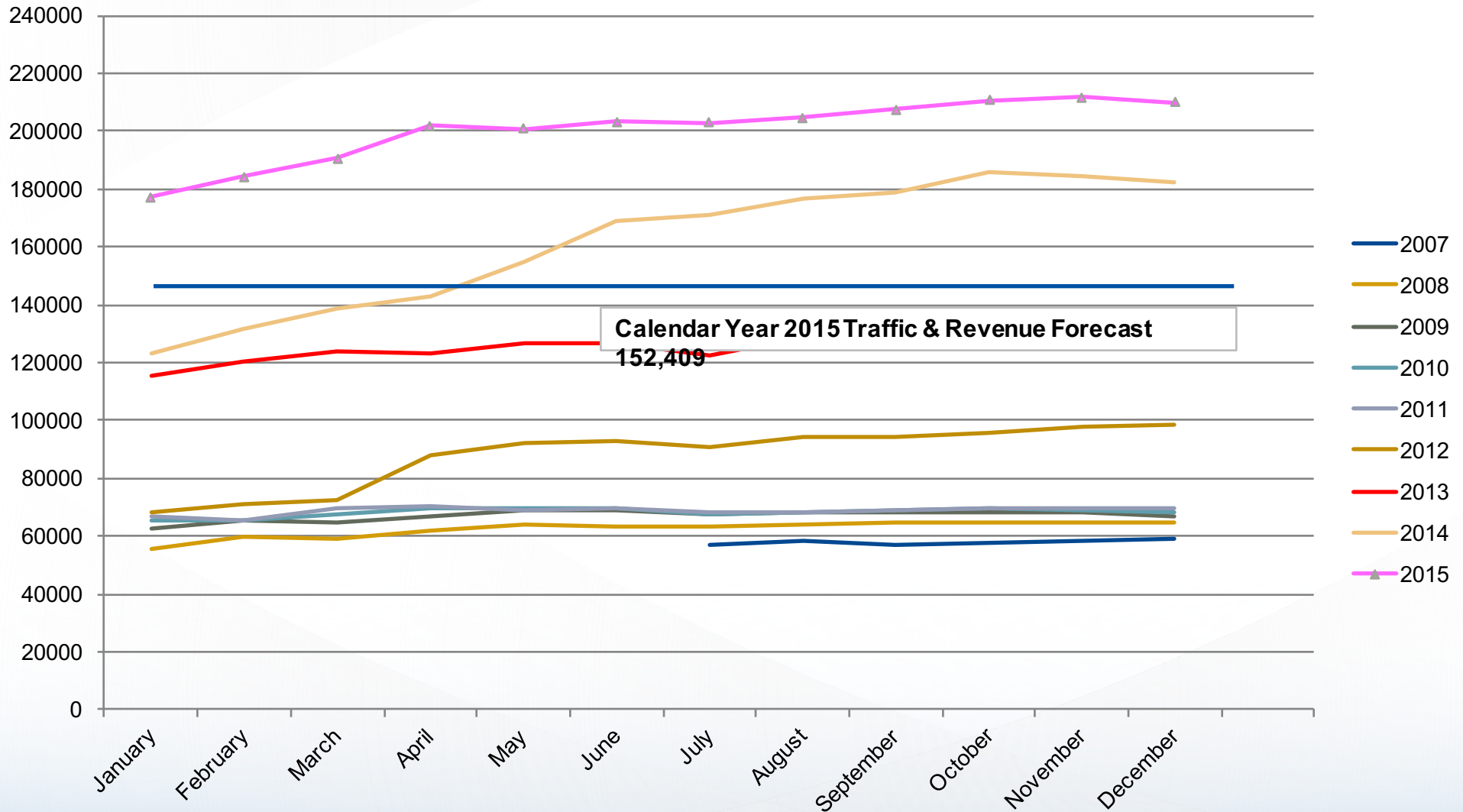
183A Average Weekday Transactions



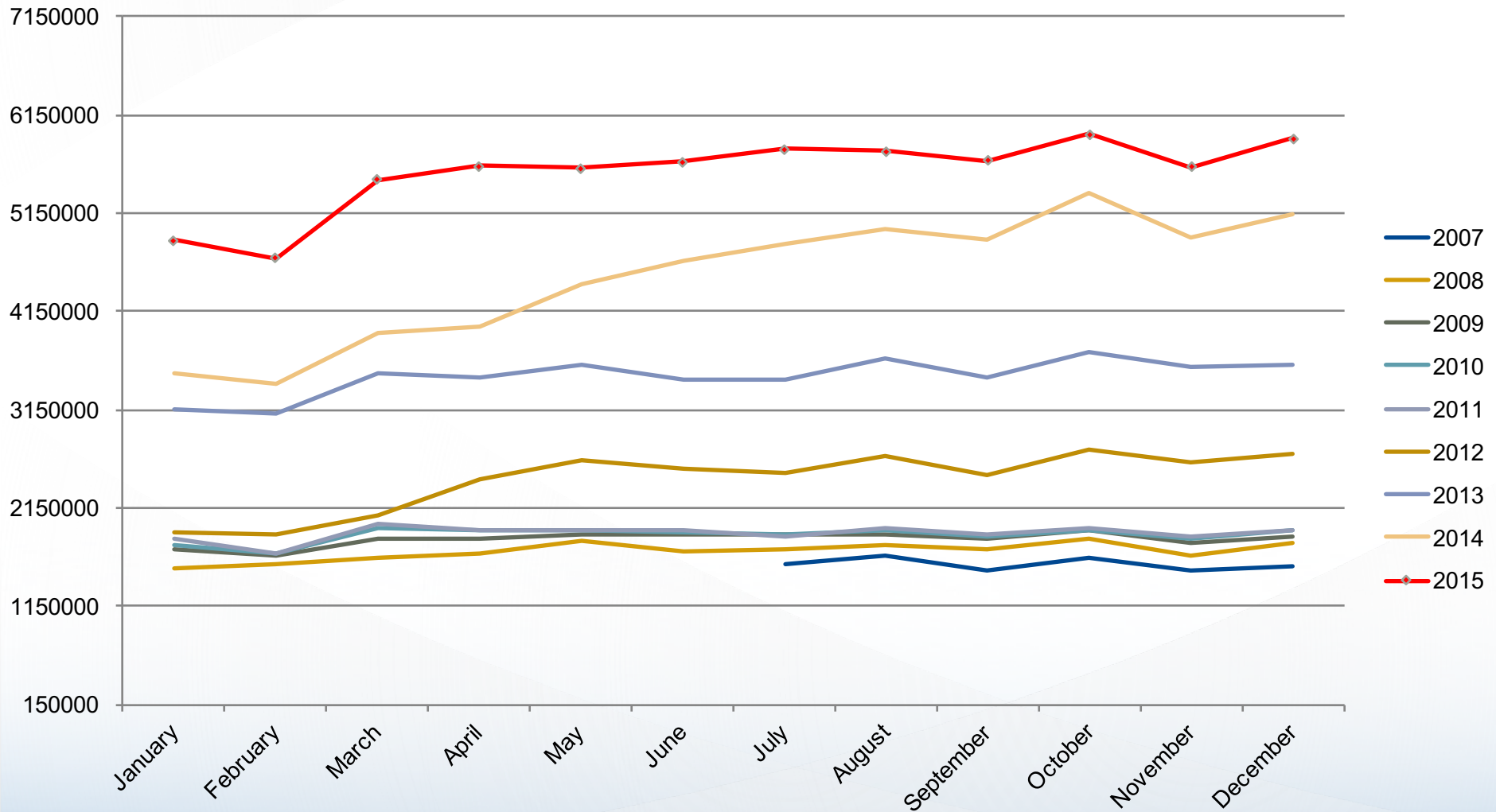
290E Average Weekday Transactions



System Average Weekday Transactions



Total System Transactions



Total System Transactions Calendar Year



2007	9,462,454
2008	20,481,168
2009	22,008,857
2010	22,494,293
2011	22,704,780
2012	29,238,220
2013	41,862,134
2014	54,052,579
2015	66,731,086

Total System Transactions
23.46%
increase for
Calendar year
2015
compared to
2014

183A up 13.22%
290E up 54.05%

Award a construction contract for the interim improvements at the SH 130 - Manor Expressway Intersection

Agenda Item #5

Justin Word, P.E., Director of Engineering

January 27, 2016



CENTRAL TEXAS
Regional Mobility Authority

Location Map – 290 East at SH 130 Intersection



Proposed Interim Improvements

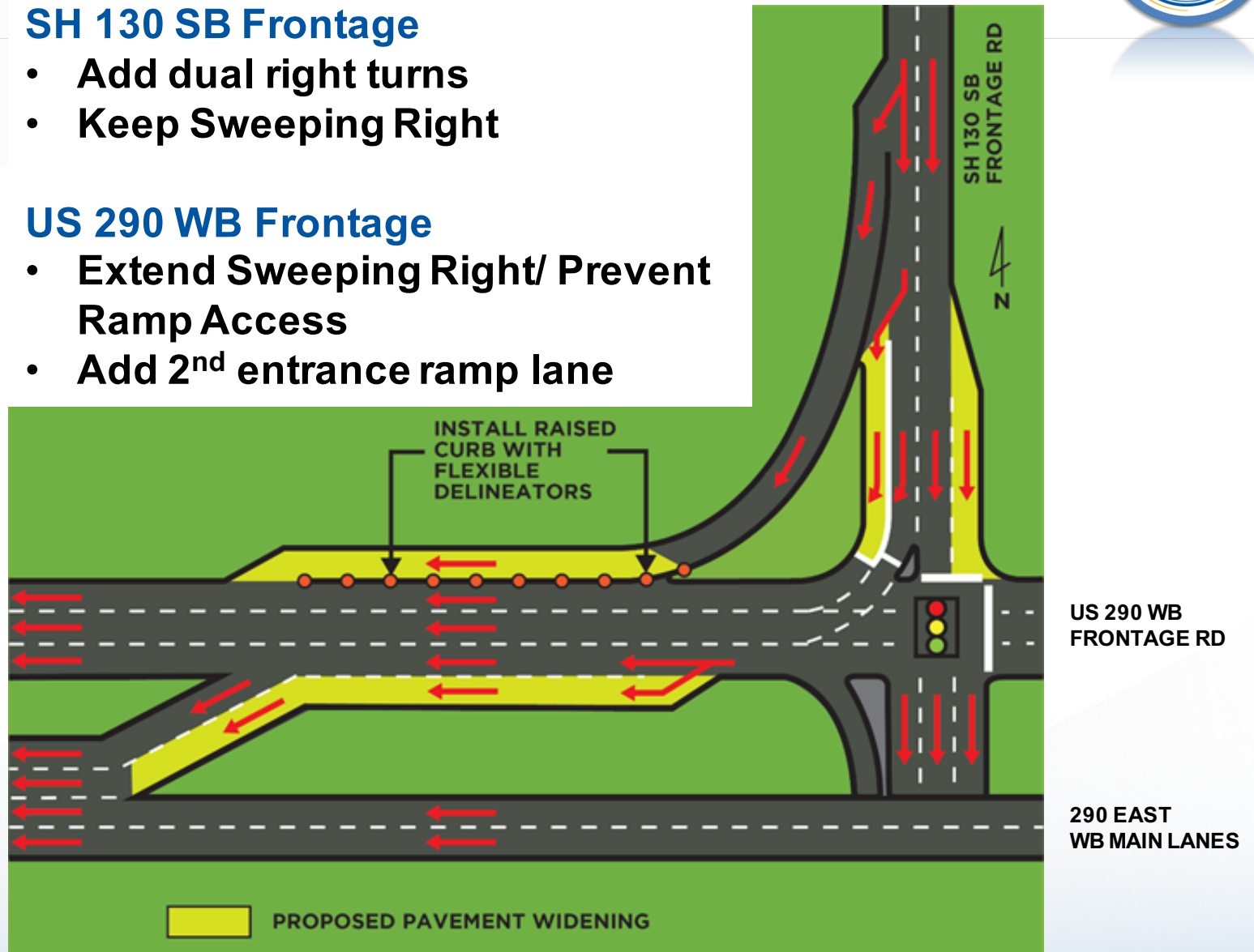


SH 130 SB Frontage

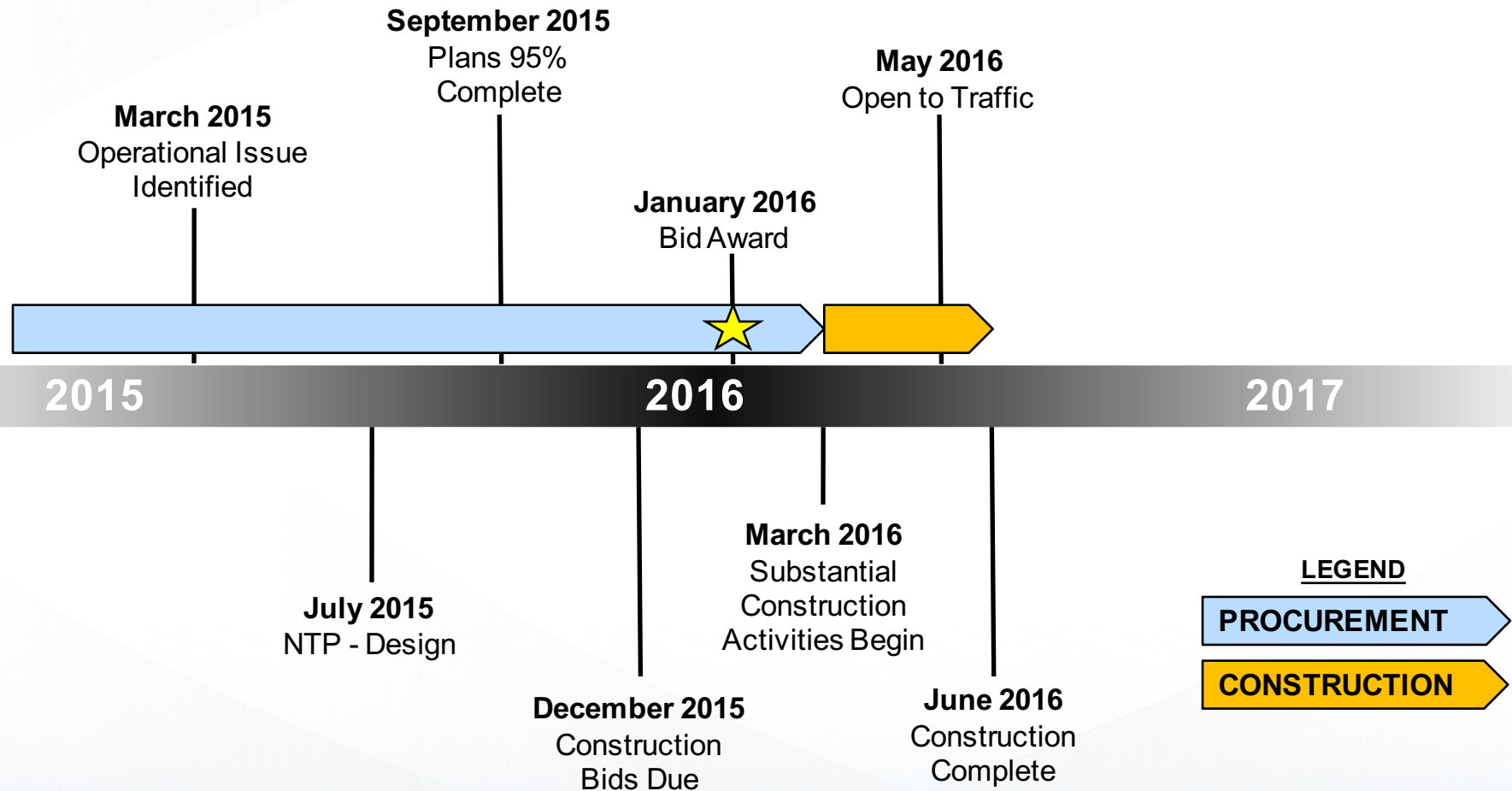
- Add dual right turns
- Keep Sweeping Right

US 290 WB Frontage

- Extend Sweeping Right/ Prevent Ramp Access
- Add 2nd entrance ramp lane



290 East/SH 130 Intersection Project Schedule





Efforts:

- 90% plans on Civcast
- Notice on Association of General Contractor's website
- Ensured letting was 2 weeks apart from TxDOT's
- 49 prime/subcontractors downloads
- Bid reminder posted to all planholders



Outcome:

- 2 additional contractors requested the bid form (4 total)
- M.A. Smith was added as a result of our outreach (assisted them in getting pre-qualified through TxDOT)

Reasons for not bidding:

- Project too small
- Self-performing opportunity for Prime is limited
- Paving companies didn't desire to be a prime
- TxDOT work keeping them busy



Contractor	Bid Price
Aaron Concrete Contractors, LP	\$2,645,302.08
M.A. Smith Contracting Company, Inc.	\$2,799,508.40

Recommendation for Award: Aaron Concrete Contractors, LP

Consider support of City of Austin grant application for “Beyond Traffic: The Smart City Challenge”

Agenda Item #6

Tim Reilly, Director of Operations

January 27, 2016



CENTRAL TEXAS
Regional Mobility Authority

The Smart City Challenge





Applicants can demonstrate that advanced Intelligent Transportation Systems (ITS) and automated data analysis can be applied to:

- reduce congestion
- keep travelers safe
- protect the environment
- respond to climate change
- connect underserved communities
- support economic vitality



#DOTSmartCity

A black circular icon containing a white stylized shape that resembles a lowercase 'r' or a curved arrow.

Smart City Challenge



The City of Austin (with regional partners) are competing for a grant of up to \$50,000,000.

- Up to \$40,000,000 from USDOT
 - \$10,000,000 from Vulcan Philanthropy
-
- **Two Part Process**
 - Part one - Compete for a \$100,000 grant for concept development
 - Awarded to five finalists
 - Part two – Compete for up to \$50,000,000
 - Awarded to one to pilot and prove

The Smart City Challenge



- **City of Austin is requesting “Letters of Support”**
- **Other committed supporters include:**

CapMetro Transit Authority

CAMPO

TxDOT

Travis County

UT Center for Transp. Research

TAMU Texas Transportation Institute

Southwest Research Institute

Governor’s Office

Texas State University



Estimated Schedule

February 2016 Applications Due

March 2016 Smart City Finalists (5) Announced

March 2016 Applications from Finalists Solicited

May 2016 Applications Due

June 2016 Awardee Announced

- Selection by US Secretary of Transportation

Briefings and Reports

Agenda Item #7-12

January 27, 2016



CENTRAL TEXAS
Regional Mobility Authority

Justification for Singled Sourced Contract with a website services company

Agenda Item #7

Geoff Petrov, General Counsel

January 27, 2016



CENTRAL TEXAS
Regional Mobility Authority

HERO Program Update

Agenda Item #8

Tim Reilly, Director of Operations

January 27, 2016



CENTRAL TEXAS
Regional Mobility Authority

Timeline



Date	Event
September, 2010	Start of H.E.R.O. Program on I-35 34 miles (I-35 from Round Rock south to Travis/Hays County Line)
December, 2012	End of Initial Funding (ARRA Stimulus)
January, 2013	Begin Expanded Limits of H.E.R.O. Program - total 66 miles (I-35 from SH 130 north of Georgetown to Yarrington Road south of Kyle & US 183 from Lakeline Blvd to I-35)
February, 2016	End of Current Funding



Preserve highway capacity

- ***Minimize disruption of highway traffic flow at incident locations***
 - Clearing stranded vehicles or removing debris from the travel lanes
 - Reduce response time to incidents
- Provide traffic control at incident scenes
 - Reduce secondary incidents
- Relieve police from attending non-accident related incidents freeing them up for other activities



Original Zones

- Zone 1: (I-35) US 79 to US 183
- Zone 2: (I-35) US 183 to US 290W / SH 71E
- Zone 3: (I-35) US 290W / SH 71E to Travis/Hays County Line





Expanded Zones

- Zone 1: (I-35) SH 130 to FM 3406
- Zone 2: (I-35) FM 3406 to US 183
- Zone 3: (I-35) US 183 to US 290W / SH 71E
- Zone 4: (I-35) US 290W / SH 71E to Yarrington
- Zone 5: (US 183) I-35 to Lakeline Blvd





Services Provided

- Rendering motorist assistance
- Mitigating and clearing light debris and non-hazardous spills
- Providing traffic control for other first responders during incidents
- Patrolling Corridor

Hours of Operation

6 AM to 8 PM - Mon – Fri

Vehicles

6 trucks



Original Program Limits

Year	Assists
2010*	1,334
2011	5,391
2012	6,242

*Sep to Dec

Current Program Limits

Year	Assists
2013	10,032
2014	11,124
2015	14,443



- **Contract ends February 2016**
- **February Board will have an Advanced Funding Agreement (AFA) and HERO contract extension action item**
- **Regional initiative:**
 - **Study expanding HERO**
 - **Discussions with TxDOT and CAMPO**
 - **Develop approach to implementation**

Quarterly briefing on the MoPac Improvement Project

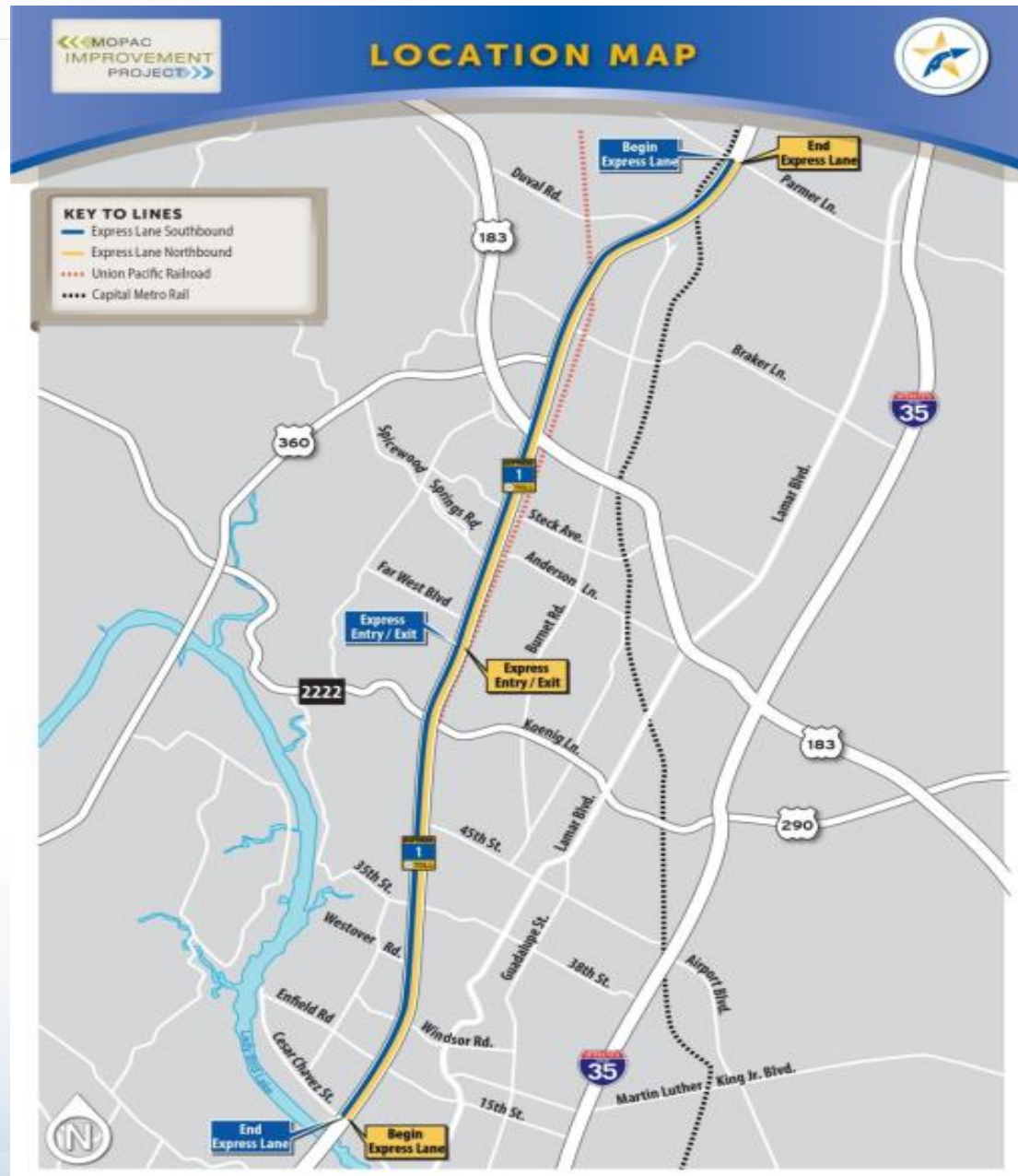
Agenda Item #9

Jeff Dailey, Deputy Executive Director
Steve Pustelnyk, Director of Community Relations

January 27, 2016



CENTRAL TEXAS
Regional Mobility Authority



Construction Photos – NB Traffic Shift Construction



Roadway Construction for Northbound Traffic Shift – December 2015

Construction Photos – Construction Activities



Install of LED Roadway Illumination – November 2015



Install of Slip Formed Median Rail – November 2015

Construction Photos – 42” Waterline



Boring for 42” Waterline at Camp Mabry – December 2015

Construction Photos – NB and SB Undercrossing



Northbound Undercrossing Excavation and Shoring – October 2015



Southbound Undercrossing Construction – December 2015

Construction Photos – Sound Wall Construction



Sound Wall Construction Along Newfield Lane – December 2015

Construction Photos – Paving



Paving at the Southbound Express Lane Underpass – January 2015



Outreach Activities

- Pemberton Heights Neighborhood Association
- Business Outreach – Chancellor Building

Community Service

- Travis County Brown Santa

On-Going Activity

- 24/7 Hotline (512-270-5000)
- EarthCam live feed
- Outreach to Community Leaders, Businesses, and Media
- Highway Advisory Radio
- Updates to Website and Social Media

Quarterly briefing on the 183 South Project



Agenda Item #10

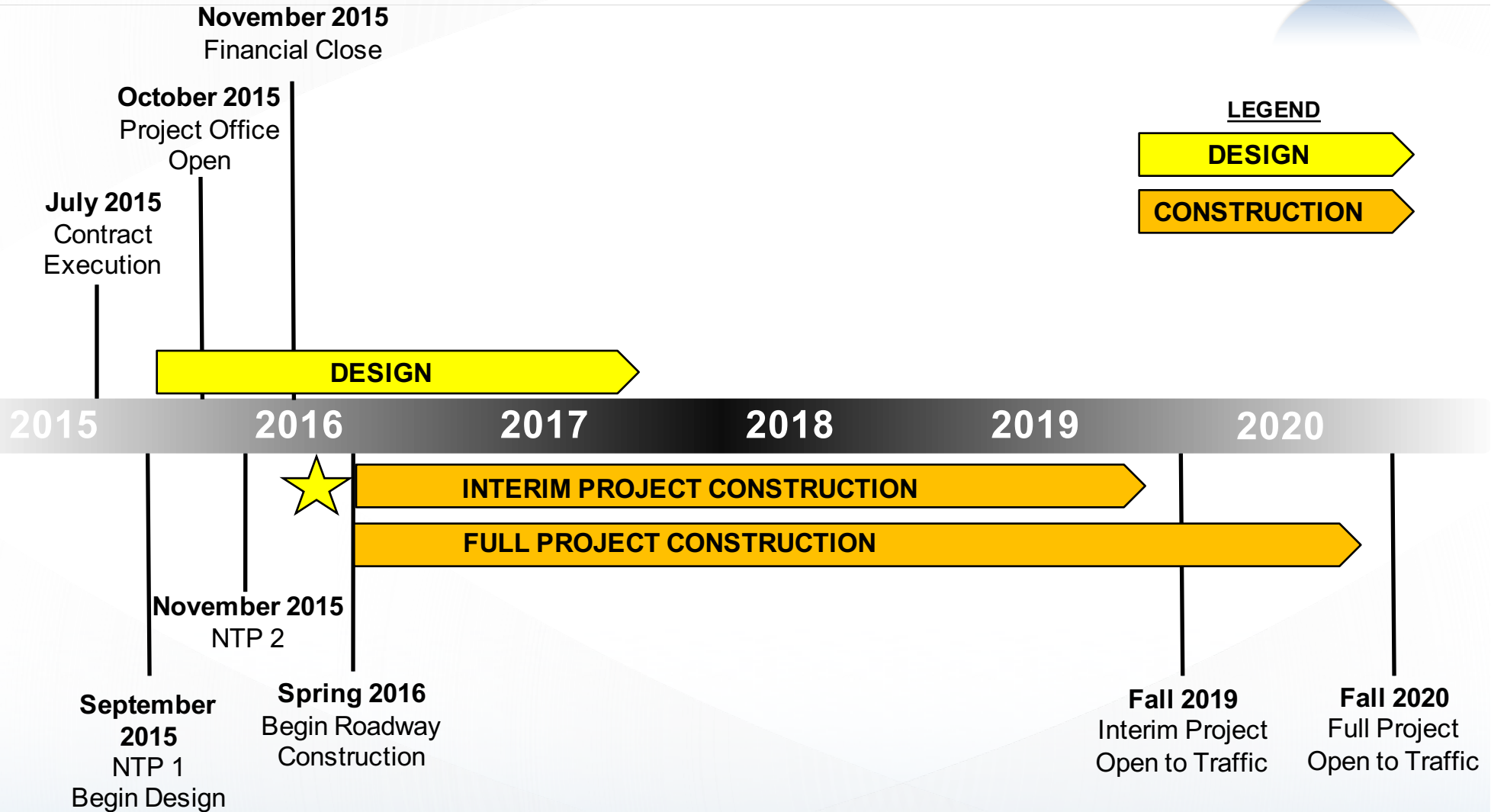
Justin Word, P.E., Director of Engineering

January 27, 2016

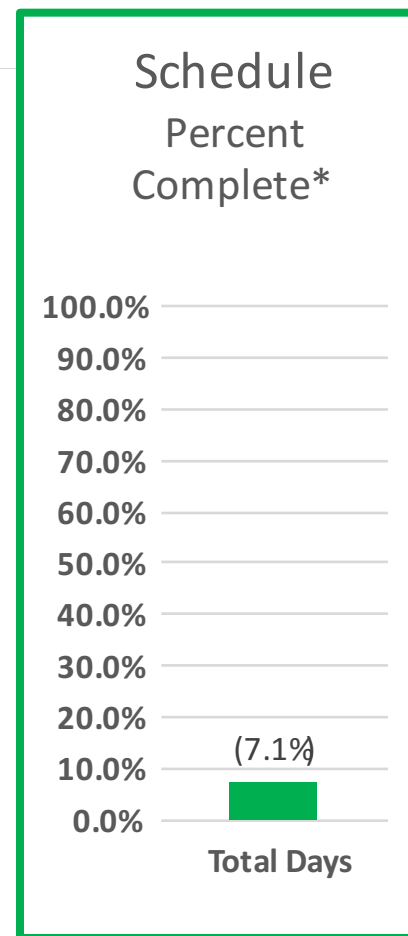
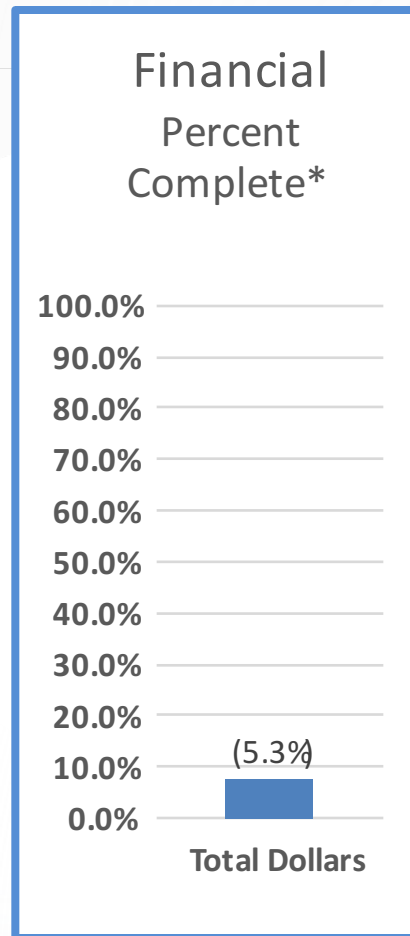


CENTRAL TEXAS
Regional Mobility Authority

183 South Project Schedule



Financial Status



*Includes Efforts thru December 27, 2015 (Draw Request #5 – Pending)

****Financial percent complete does not include mobilization**

Public Outreach Status



Public Involvement

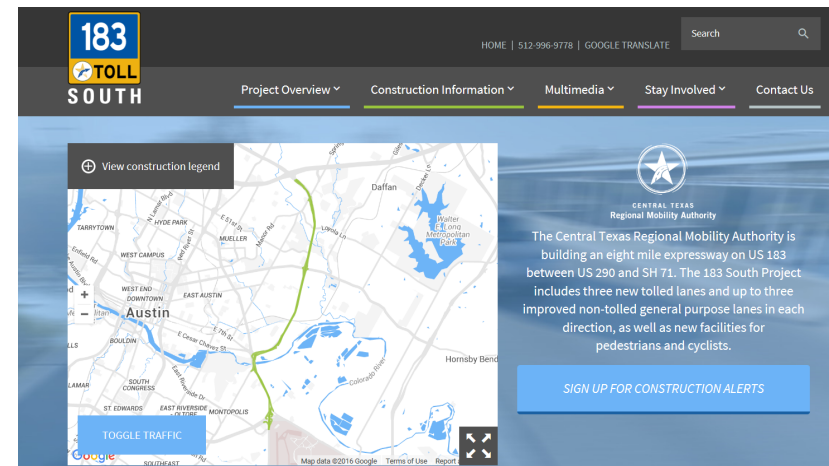
- Kick off meeting with CRC

5 Individual Inquiries

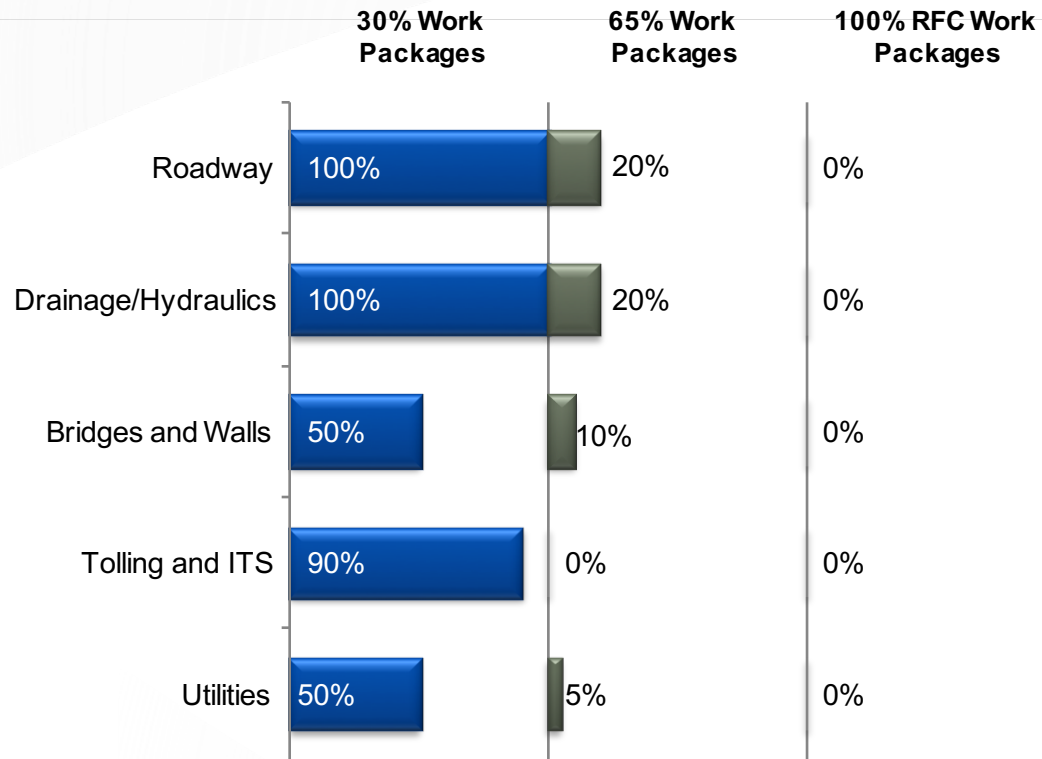
- Support future expansion of project
- Employment opportunities
- Toll finance

Upcoming activities

- Community Relations Plan
- Hotline
- Stakeholder ID
- Outreach Meetings and Presentations
- Groundbreaking Ceremony



Design Status



Design efforts are on schedule

- **30% design effort is 75% complete**
- **65% design package delivery starts late January 2016**

Utility Relocation Status



Master Utility Adjustment Agreements (MUAAs)



Interlocal Agreements (ILAs) with CTRMA



(Possible MUAAs)

- ILAs/MUAAs Anticipated Spring 2016
- Utility MUAAs are Responsibility of Contractor

Project Photos



Pre-Construction Aerial Photos Complete



**183 S @
Springdale/Manor**



183 S @ MLK

Project Photos



**183 S @ Colorado
River**

CENTRAL TEXAS
Regional Mobility Authority



183 S @ SH71



- **QUESTIONS/COMMENTS**

Quarterly briefing on the transportation projects under development

Agenda Item #11

Justin Word, P.E., Director of Engineering

January 27, 2016



CENTRAL TEXAS
Regional Mobility Authority

Oakhill Parkway Project

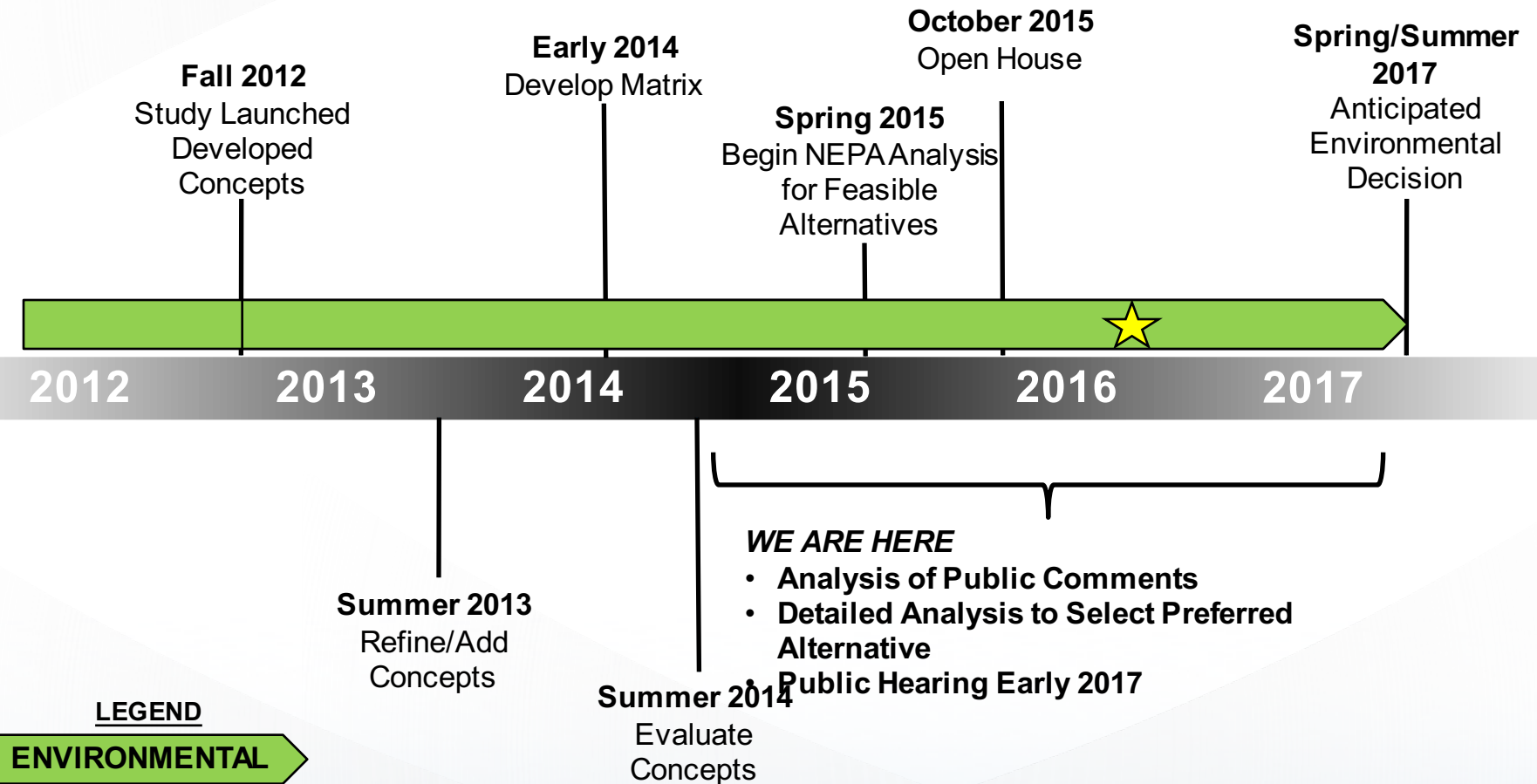
Justin Word, P.E., Director of Engineering

January 27, 2016



CENTRAL TEXAS
Regional Mobility Authority

Oakhill Parkway Project



290 East/SH 130 Direct Connectors Briefing

Justin Word, P.E., Director of Engineering

January 27, 2016



CENTRAL TEXAS
Regional Mobility Authority

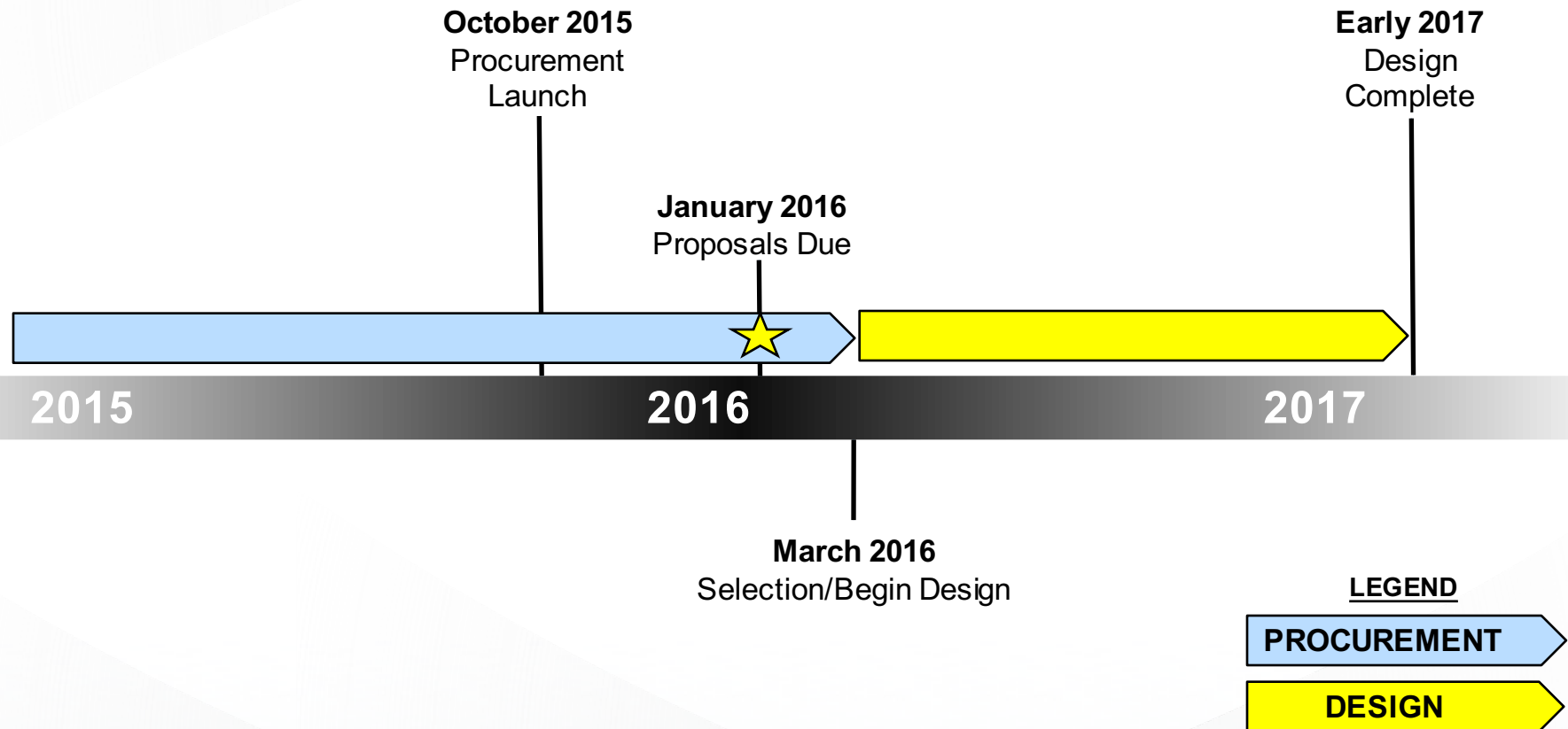
Location Map - 290 East/SH 130 Direct Connector



Proposed 290/SH 130 Direct Connector



290 East/SH 130 Direct Connector Procurement Design Schedule



MoPac South Environmental Study

Justin Word P.E., Director of Engineering

January 27, 2016



CENTRAL TEXAS
Regional Mobility Authority

MoPac South Environmental Study

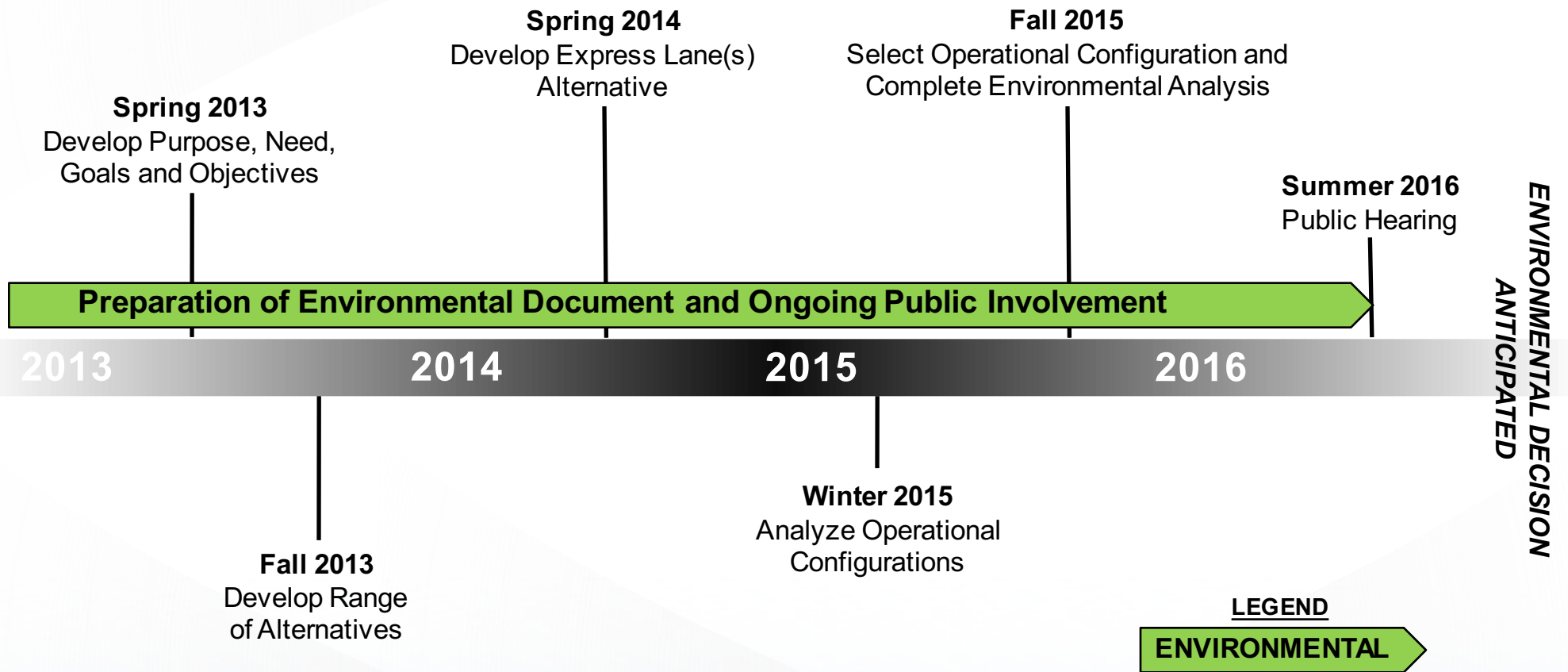


MoPac South
ENVIRONMENTAL STUDY

Environmental Assessment



MoPac South Environmental Study



MoPac Intersections Environmental Study

Justin Word, P.E., Director of Engineering

January 27, 2016



CENTRAL TEXAS
Regional Mobility Authority

MoPac Intersections Environmental Study



- **Finding of No Significant Impact issued on December 22, 2015**
- **Project will move forward into final design**
- **TxDOT will assume responsibility for final design, construction and any associated public involvement**



183 North Mobility Project

Justin Word, P.E., Director of Engineering

January 27, 2016



CENTRAL TEXAS
Regional Mobility Authority

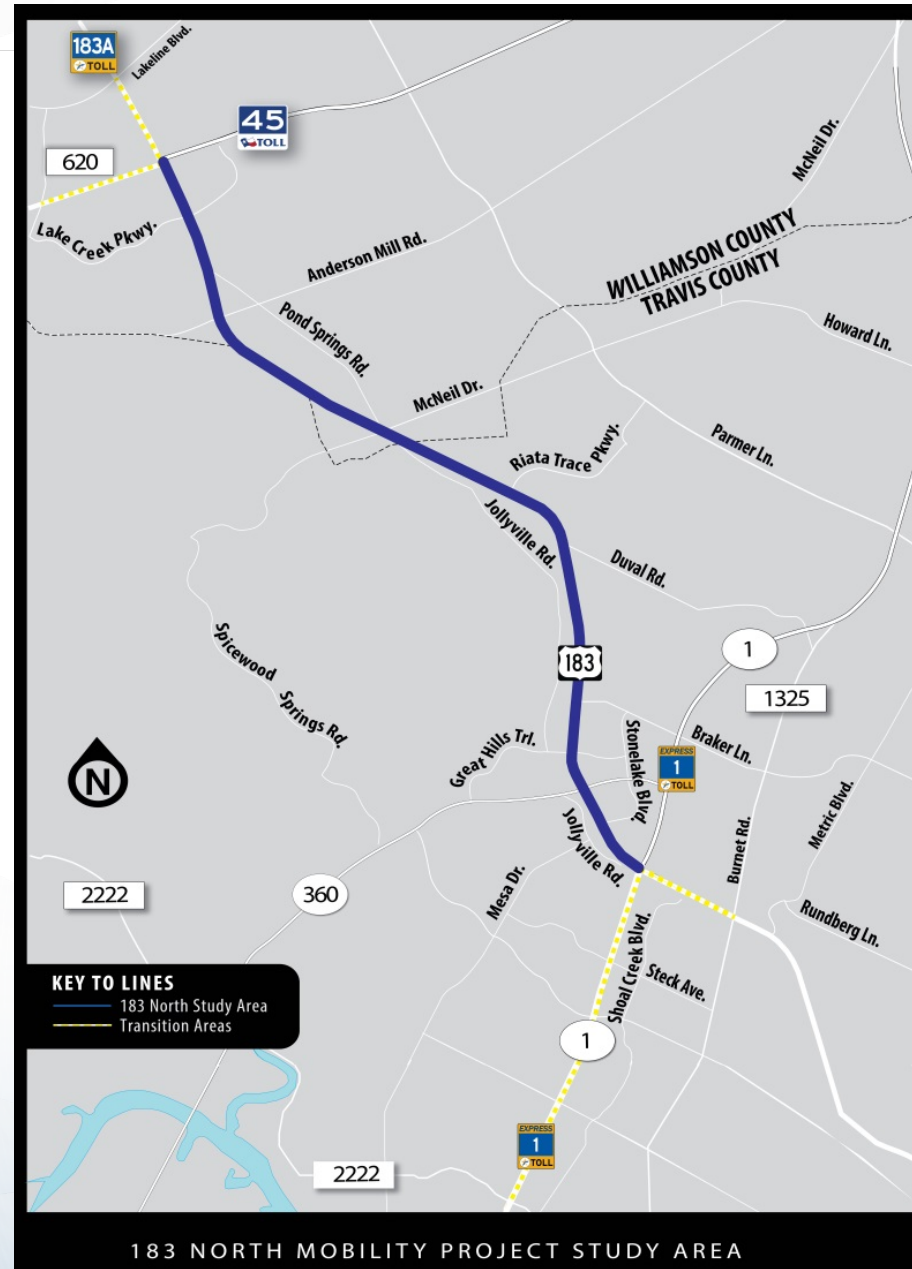
183 North Mobility Project



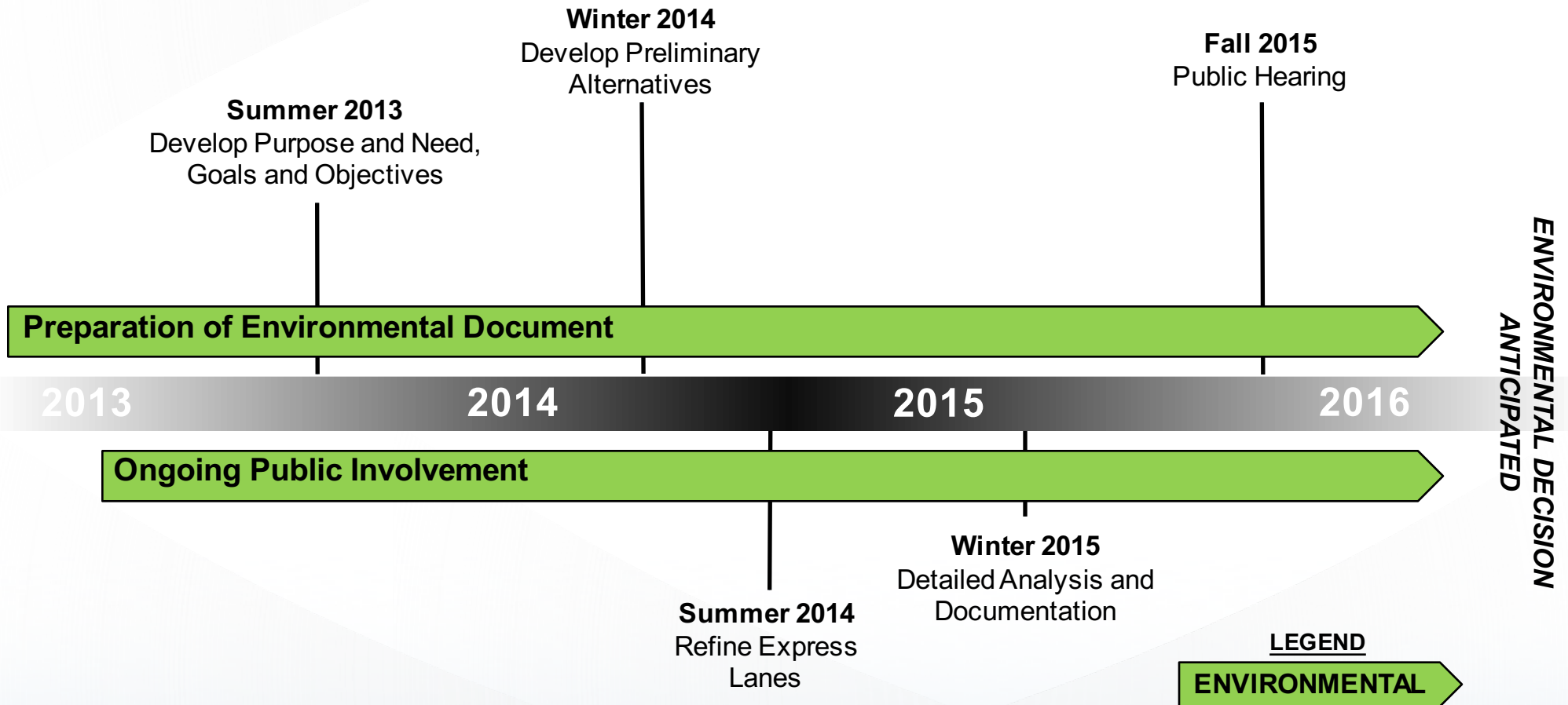
183

NORTH
MOBILITY PROJECT

Environmental Assessment



183 North Mobility Project



183 North Mobility Project



183 North Mobility Project Cost Estimate Summary

Proposed CAMPO 2040 Plan Amendment

Description	Original Cost Estimate	Revised Total Cost Estimate w/ additional elements (2040 Plan Amendment)
2 express lanes in each direction (Limits from RM 620 / SH 45 to Loop 1)	\$225,700,000	\$225,700,000
MoPac direct connections and transition <ul style="list-style-type: none"> MoPac express lane direct connections MoPac transition lane from approximately Steck Avenue to RM 2222 <p style="text-align: right;">Subtotal</p>	Elements not in original proposal	\$96,500,000
		\$20,500,000
		\$117,000,000
Additional non-tolled 4th general purpose lane in each direction (resulting from NEPA process / TxDOT input)		\$90,200,000
RM 620 / SH 45 interchange direct connections (resulting from NEPA process)		\$147,700,000
Estimated project inflation adjustment from 2015 to 2020 Year of Expenditure (YOE) dollars – midpoint of construction (2.0% – 2.5% per year)		\$69,400,000
Total Project Cost	\$225,700,000	\$650,000,000
Cost Difference		\$424,300,000

Executive Directors Report

Agenda Items #12A-D

Mike Heiligenstein, Executive Director

January 27, 2016



CENTRAL TEXAS
Regional Mobility Authority

Executive Directors Report Project Updates

Agenda Item #12-A

Mike Heiligenstein, Executive Director

January 27, 2016



CENTRAL TEXAS
Regional Mobility Authority

Executive Directors Report San Gabriel Signals

Agenda Item #12-B

Mike Heiligenstein, Executive Director

January 27, 2016

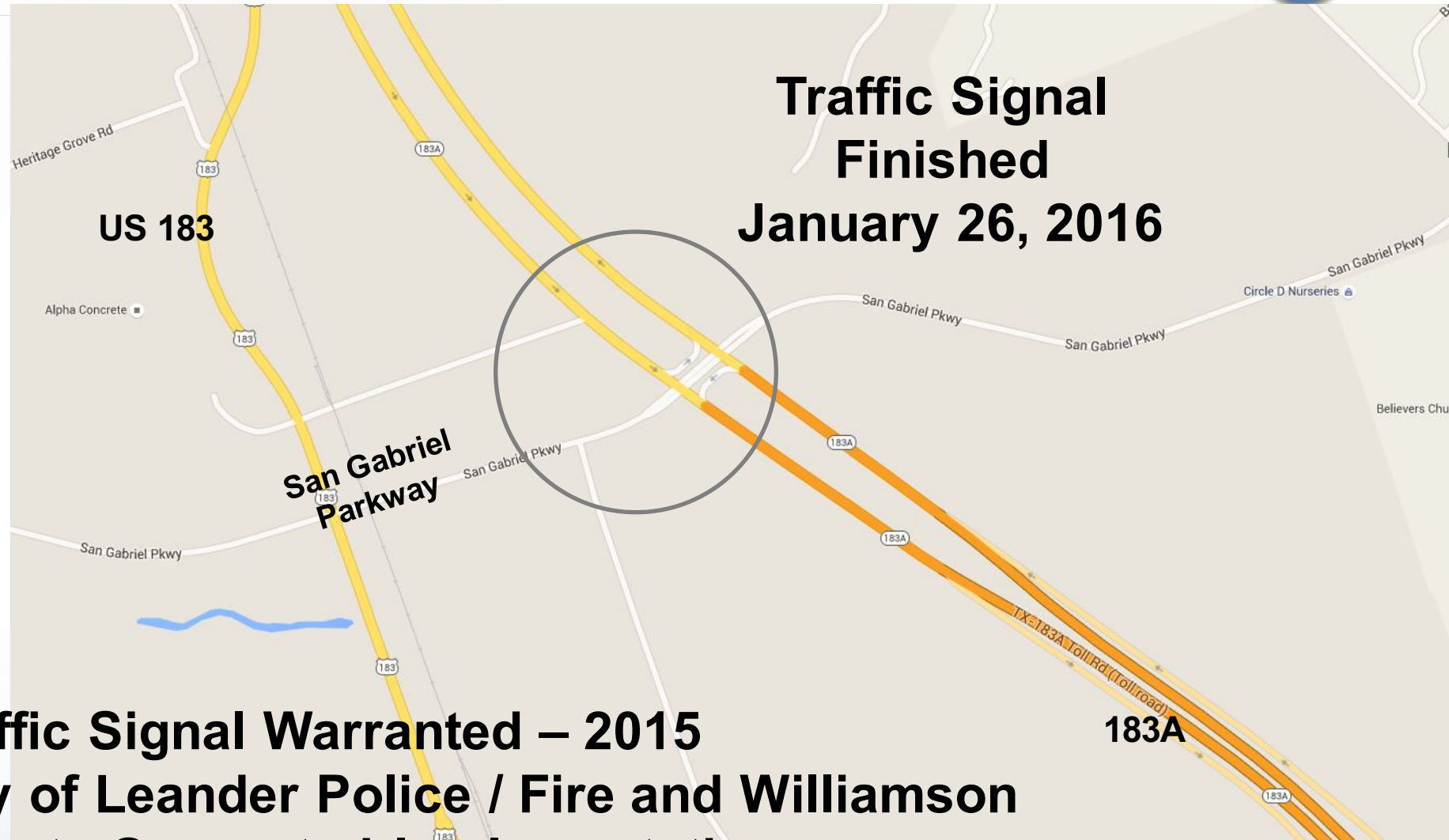


CENTRAL TEXAS
Regional Mobility Authority

San Gabriel Pkwy / 183A Intersection

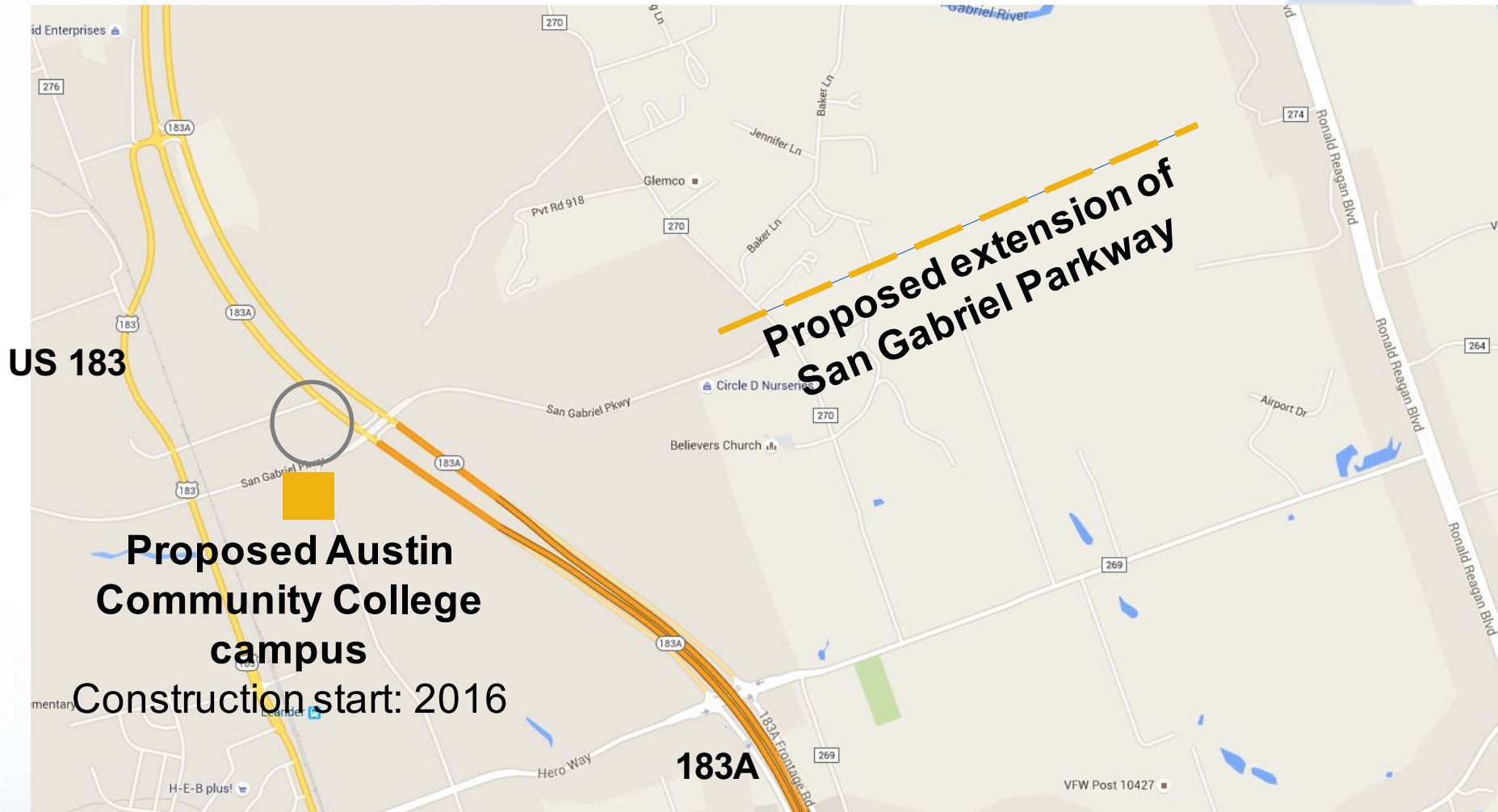


**Traffic Signal
Finished
January 26, 2016**



**Traffic Signal Warranted – 2015
City of Leander Police / Fire and Williamson
County Supported Implementation**

San Gabriel Pkwy Future Extension / ACC Development



Executive Directors Report Park and Ride

Agenda Item #12-C

Mike Heiligenstein, Executive Director

January 27, 2016



CENTRAL TEXAS
Regional Mobility Authority

Executive Directors Report Mobility Transportation Advisory Council

Agenda Item #12-D

Mike Heiligenstein, Executive Director

January 27, 2016



CENTRAL TEXAS
Regional Mobility Authority

Executive Session

Agenda Items #13-16

January 27, 2016



CENTRAL TEXAS
Regional Mobility Authority

Approve a contract to acquire Parcel 14 of the US 290 E Project, a 1.837 acre parcel of real estate located at the southwest corner of 290E and Springdale Road, Austin, Travis County, Texas from Speedy Stop Food Stores

Agenda Item #17

Geoff Petrov, General Counsel

January 27, 2016



**CENTRAL TEXAS
Regional Mobility Authority**

Adjourn Meeting

Agenda Item #18

January 27, 2016



CENTRAL TEXAS
Regional Mobility Authority



CENTRAL TEXAS
Regional Mobility Authority